



# **Maryland Special Education/ Early Intervention Services Census Data & Related Tables**

**October 29, 2004  
Revised 11/2005**

Maryland State Department of Education  
Division of Planning, Results, and Information Management  
200 West Baltimore Street  
Baltimore, MD 21201-2595  
(410) 767-0073

MSDE-DSE/EIS 04100(R)003 3/05

# MARYLAND STATE BOARD OF EDUCATION

**Edward L. Root**  
*President*

**Dunbar Brooks**  
*Vice President*

**Lelia T. Allen**  
**Jo Ann T. Bell**  
**J. Henry Butta**  
**Beverly A. Cooper**  
**Calvin D. Disney**  
**Clarence A. Hawkins**  
**Karabelle Pizzigati**  
**Maria C. Torres-Queral**  
**David F. Tufaro**  
**Brian A. Williamson** (*Student Member*)

**Nancy S. Grasmick**  
*Secretary-Treasurer of the Board*  
*State Superintendent of Schools*

**A. Skipp Sanders**  
*Deputy State Superintendent for Administration*

**Richard J. Steinke**  
*Deputy State Superintendent for School Improvement*

**Ronald A. Peiffer**  
*Deputy State Superintendent for Academic Policy*

**Gary Heath**  
*Assistant State Superintendent*  
*Division of Accountability and Assessment*

The Maryland State Department of Education does not discriminate on the basis of race, color, sex, age, national origin, religion, or disability in matters affecting employment or in providing access to programs. For inquiries related to departmental policy, please contact the Equity Assurance and Compliance Branch, Maryland State Department of Education, 200 West Baltimore Street, Baltimore, MD 21201, (410) 767-0425 - Voice, (410) 333-6442 - TTY/TDD, (410) 333-2226 - Fax.

**Maryland Special Education/Early Intervention Services  
 Census Data & Related Tables  
 October 29, 2004**

**Table of Contents**

**Introduction**

**Definitions**

<b>Table</b>	<b>Page</b>
1 Students with Disabilities as Percent of September Enrollment .....	1
2 Students with Disabilities by Disability .....	2
3 Students with Disabilities Trend in High Growth Disabilities .....	5
4 Students with Disabilities by Age .....	6
5 Students with Disabilities by Age and Disability .....	7
6 Students with Disabilities by Grade .....	8
7 Students with Disabilities by Grade and Disability .....	10
8 Students with Disabilities by Gender .....	12
9 Students with Disabilities by Race .....	13
10 Students with Disabilities Compared with General Education Students by Race .....	14
11 Students with Disabilities by Race and Disability .....	16
12 Students with Disabilities by Least Restrictive Environment Ages 3-5 .....	17
13 Students with Disabilities by Least Restrictive Environment Age 3 .....	19
14 Students with Disabilities by Least Restrictive Environment Age 4 .....	20
15 Students with Disabilities by Least Restrictive Environment Age 5 .....	21
16 Students with Disabilities by Least Restrictive Environment Age 6-21 .....	22
17 Students with Disabilities by Least Restrictive Environment Ages 3-21 .....	24
18-20 Students with Disabilities by Least Restrictive Environment in Rank Order .....	25-27
21 Students with Disabilities Focused Monitoring Ages 3-5 .....	28
22 Students with Disabilities Focused Monitoring Ages 6-21 .....	29
23 Students with Disabilities Served in Home/Hospital .....	30
24 Students with Disabilities Trend by LRE .....	31
25 Students with Disabilities by Race and LRE .....	32
26 Students with Disabilities Receiving ESY Service .....	33
27 Students with Disabilities Placed by Their Parents in Private Schools Ages 3-21 .....	34
28 Students with Disabilities Placed by Their Parents in Private Schools Ages 3-5 .....	35
29 Students with Disabilities by IEPs Older Than 13 Months and Evaluations Older Than 3 Years .....	36
30 Students with Disabilities in Nonpublic Schools .....	37-39
31 Students with Disabilities by Exit Reason and LEA .....	41

32	Students with Disabilities by Exit Reason and LEA Trend .....	43
33	Students with Disabilities by Exit Reason and Disability .....	44
34	Students with Disabilities by Exit Reason and LRE .....	45
35	Students with Disabilities by Extended Suspensions .....	47
36	Students with Disabilities by Multiple Suspension .....	48
37	Maryland Part C Child Report .....	50

**Figures**

1	Students with Disabilities by Disability .....	4
2	Students with Disabilities by LRE .....	18
3	Students with Disabilities Trend by LRE Setting .....	23
4-5	Students with Disabilities Trend by LRE .....	31
6	Students with Disabilities by Exit Reason .....	42

**New Tables:**

The October 29, 2004 version of Special Education/Early Intervention Services Census Data and Related Tables includes additional tables listed below. Also new this year is a footnote indicating which Eligibility Categories are included in each Table.

13	Students with Disabilities by Least Restrictive Environment Age 3 .....	19
14	Students with Disabilities by Least Restrictive Environment Age 4 .....	20
15	Students with Disabilities by Least Restrictive Environment Age 5 .....	21
32	Students with Disabilities by Exit Reason and LEA Trend .....	43
33	Students with Disabilities by Exit Reason and Disability .....	44
34	Students with Disabilities by Exit Reason and LRE .....	45

## Introduction

Annually, the Maryland State Department of Education (MSDE) collects information on students with disabilities (ages 3-21) who reside in the State of Maryland. Until 2003 this child count was taken on December 1. Beginning in 2003 it is taken the last Friday of October. In order to be included in this count, the child must be identified as having a disability and receiving active special education services on the last Friday of October.

The Special Services Information System (SSIS) consists of two separate data collections. The first is the last Friday of October Census, a count of all students receiving special education services on the last Friday of October of every year. Data on students who have exited special education are collected on June 30 of every year.

The SSIS database is used to compile information on Maryland students with disabilities. MSDE uses the SSIS database as:

- a source of information to meet planning, monitoring, and accounting responsibilities for special education;
- a recording and reporting tool for decisions made by the public agencies; and
- an instrument for federal reporting requirements.\*

### Definitions

#### Least Restrictive Environments

**(A) Outside the General Ed Classroom < 21%** - 6-21 year old enrolled in a comprehensive school who receives special education and related services *outside the general education setting* for less than 21% of the school day.

**(B) Outside the General Ed Classroom 21-60%** - 6-21 year old enrolled in a comprehensive school who receives special education and related services *outside the general education setting* for at least 21%, but no more than 60% of the school day.

**(C) Outside the General Ed Classroom > 60%** - 6-21 year old enrolled in a comprehensive school who receives special education and related services *outside the general education setting* for more than 60% of the school day.

**(D) Homebound Placement** – 6-21 year old who receives special education instruction at home.

**(E) Hospital Placement** – 3-21 year old who receives special education in a medical treatment facility on an inpatient basis.

**(F) Public Separate Day School** – 6-21 year old who spends more than 50% of the school day in separate public facility *that does not house programs for students without disabilities*.

**(G) Private Separate Day School** – 6-21 year old who spends more than 50% of the school day in private separate day facility *that does not house programs for students without disabilities*.

**(H) Public Residential Facility** – 6-21 year old who receives special education and related services for greater than 50% of the school day in a public residential facility.

**(I) Private Residential Facility or Center** - 6-21 year old who receives special education and related services for greater than 50% of the school day in a private residential facility.

#### Additional Preschool Least Restrictive Environments

**(F) Public Separate Day School** – 3-5 year old who receives ALL of their special education and related services in educational programs in public day schools specifically for students with disabilities.

**(G) Private Separate Day School** - 3-5 year old who receives ALL of their special education and related services in educational programs in private day schools specifically for students with disabilities

**(H) Public Residential Facility** - 3-5 year old who receives ALL of their

special education and related services in publicly operated residential facility or residential medical facility on an inpatient basis.

**(I) Private Residential Facility or Center** - 3-5 year old who receives ALL of their special education and related services in privately operated residential facility or residential medical facility on an inpatient basis.

**(J) Home** – 3-5 year old who received ALL of their special education and related services in the principal residence of the child’s family or caregivers.

**(K) Itinerant Setting** – 3-5 year old who receives all of their special education and related services at a school, hospital facility on an outpatient basis, or other location for a short period of time (i.e., no more than 3 hours per week).

**(L) Reverse Mainstreaming** – 3-5 year old who receives special education in a class designed for disabled student where over 50% of the students are not disabled.

**(M) Early Childhood Setting** – 3-5 year old who receives all of their special education and related services in educational programs designed primarily for children without disabilities.

**(N) Early Childhood Special Education Setting** – 3-5 year old who receives all of their special education and related services in educational programs designed primarily for children with disabilities housed in regular school buildings or other community based settings.

**(O) Part-Time Early Childhood Part-Time Early Childhood Special Education** – 3-5 year old who receives services in multiple settings.

**\*For more information on the Maryland Infants & Toddlers Program see <http://marylandpublicschools.org>**

## **Eligibility**

***Note: All tables in this publication reflect Eligibility 1 and 2 students unless otherwise indicated (see Table 17a and 17b).***

**(1) Eligibility 1** - Student with a disability served in a public school or placed in a nonpublic school by the public agency to receive FAPE.

**(2) Eligibility 2** - Parentally placed private school student with a disability receiving special education and/or related service through a service plan from the public agency.

**(3) Eligibility 3** - Parentally placed private school student with a disability NOT receiving service from the public agency.

Table 1

Students with Disabilities as Percent of September 30 Enrollment\*: Five-Year Trend  
Special Education - Ages 3-21

	1994			1999			2004		
	Sept. 30 Enrollment	Special Education	Percent	Sept. 30 Enrollment	Special Education	Percent	Sept. 30 Enrollment	Special Education	Percent
Total State	790,938	95,752	12.1%	846,582	110,741	13.1%	865,561	111,498	12.9%
Allegany	11,303	1,354	12.0%	10,662	1,781	16.7%	9,840	1,550	15.8%
Anne Arundel	70,588	9,215	13.1%	74,663	10,432	14.0%	73,991	10,028	13.6%
Baltimore City	113,428	17,290	15.2%	103,000	17,794	17.3%	88,401	14,904	16.9%
Edison Schools Baltimore			NA			NA	2,276	160	7.0%
Baltimore	99,231	11,824	11.9%	106,465	12,888	12.1%	107,701	14,035	13.0%
Calvert	12,819	1,450	11.3%	15,784	2,144	13.6%	17,451	2,336	13.4%
Caroline	5,290	721	13.6%	5,608	779	13.9%	5,412	705	13.0%
Carroll	24,515	3,181	13.0%	27,472	3,804	13.8%	28,792	3,695	12.8%
Cecil	14,258	2,162	15.2%	15,680	2,458	15.7%	16,535	2,510	15.2%
Charles	20,419	2,515	12.3%	22,720	2,831	12.5%	26,026	2,426	9.3%
Dorchester	5,165	701	13.6%	5,072	639	12.6%	4,788	541	11.3%
Frederick	31,655	3,888	12.3%	36,059	4,463	12.4%	39,489	4,895	12.4%
Garrett	5,104	718	14.1%	4,989	761	15.3%	4,737	690	14.6%
Harford	35,956	4,304	12.0%	39,334	5,827	14.8%	40,294	6,064	15.0%
Howard	36,125	4,004	11.1%	43,473	4,418	10.2%	48,219	4,993	10.4%
Kent	2,794	351	12.6%	2,875	340	11.8%	2,514	359	14.3%
Montgomery	117,082	12,151	10.4%	130,720	16,226	12.4%	139,393	17,628	12.6%
Prince George's	118,478	11,593	9.8%	131,059	13,604	10.4%	136,095	14,828	10.9%
Queen Anne's	6,020	661	11.0%	7,069	1,063	15.0%	7,713	1,018	13.2%
St. Mary's	13,428	1,791	13.3%	15,020	2,054	13.7%	16,567	2,245	13.6%
Somerset	3,339	380	11.4%	3,118	401	12.9%	2,952	368	12.5%
Talbot	4,340	491	11.3%	4,502	491	10.9%	4,505	470	10.4%
Washington	19,510	2,869	14.7%	19,953	2,948	14.8%	20,807	2,664	12.8%
Wicomico	13,652	1,452	10.6%	14,302	1,679	11.7%	14,387	1,666	11.6%
Worcester	6,439	686	10.7%	6,983	916	13.1%	6,676	720	10.8%

\* LEA totals only - does not include Public Agencies

\*\*September 30 Enrollment includes Special Education students. Table will remain in this format to preserve historical integrity.

\*\*\*Special Education Numbers include Eligibility 1 and 2 Students

Table 2  
 Students with Disabilities by Disability  
 Ages 3-21  
 October 29, 2004

	Total Special Education	Mental Retardation		Hearing Impaired		Deaf		Speech/ Language		Visually Impaired		Emotion-ally Disturbed		Orthope-dically Impaired	
		Total	Percent	Total	Percent	Total	Percent	Total	Percent	Total	Percent	Total	Percent	Total	Percent
Total State	112,388	6,454	5.74%	632	0.56%	702	0.62%	28,489	25.35%	534	0.48%	9,775	8.70%	528	0.47%
Allegany	1,550	125	8.06%	0	0.00%	6	0.39%	334	21.55%	0	0.00%	67	4.32%	1	0.06%
Anne Arundel	10,028	425	4.24%	50	0.50%	9	0.09%	2,391	23.84%	19	0.19%	837	8.35%	19	0.19%
Baltimore City	14,904	1,720	11.54%	81	0.54%	18	0.12%	3,265	21.91%	82	0.55%	2,386	16.01%	103	0.69%
Edison Schools	160	10	6.25%	0	0.00%	0	0.00%	54	33.75%	1	0.63%	13	8.13%	0	0.00%
Baltimore	14,035	746	5.32%	82	0.58%	28	0.20%	3,105	22.12%	33	0.24%	1,531	10.91%	44	0.31%
Calvert	2,336	90	3.85%	15	0.64%	1	0.04%	662	28.33%	5	0.21%	125	5.35%	6	0.26%
Caroline	705	48	6.81%	2	0.28%	3	0.43%	268	38.01%	0	0.00%	38	5.39%	3	0.43%
Carroll	3,695	130	3.52%	28	0.76%	5	0.14%	1,351	36.56%	13	0.35%	229	6.20%	25	0.68%
Cecil	2,510	110	4.38%	10	0.40%	3	0.12%	688	27.41%	8	0.32%	113	4.50%	17	0.68%
Charles	2,426	269	11.09%	12	0.49%	2	0.08%	749	30.87%	8	0.33%	252	10.39%	6	0.25%
Dorchester	541	57	10.54%	3	0.55%	2	0.37%	133	24.58%	7	1.29%	15	2.77%	1	0.18%
Frederick	4,895	142	2.90%	37	0.76%	11	0.22%	1,571	32.09%	26	0.53%	347	7.09%	27	0.55%
Garrett	690	29	4.20%	4	0.58%	0	0.00%	181	26.23%	2	0.29%	76	11.01%	3	0.43%
Harford	6,064	228	3.76%	26	0.43%	5	0.08%	1,708	28.14%	23	0.38%	335	5.52%	21	0.35%
Howard	4,993	197	3.94%	21	0.42%	15	0.30%	1,653	33.10%	27	0.54%	271	5.43%	31	0.62%
Kent	359	27	7.52%	3	0.84%	0	0.00%	66	18.38%	2	0.56%	14	3.90%	0	0.00%
Montgomery	17,628	608	3.45%	117	0.66%	122	0.69%	5,558	31.53%	63	0.36%	1,100	6.24%	81	0.46%
Prince George's	14,828	862	5.81%	101	0.68%	36	0.24%	2,482	16.74%	24	0.16%	1,463	9.87%	115	0.78%
Queen Anne's	1,018	26	2.55%	1	0.10%	4	0.39%	179	17.58%	2	0.20%	36	3.54%	1	0.10%
St. Mary's	2,245	89	3.96%	16	0.71%	2	0.09%	661	29.44%	8	0.36%	122	5.43%	6	0.27%
Somerset	368	48	13.04%	0	0.00%	3	0.82%	48	13.04%	2	0.54%	14	3.80%	1	0.27%
Talbot	470	53	11.25%	3	0.64%	1	0.21%	173	36.73%	1	0.21%	13	2.76%	4	0.85%
Washington	2,664	178	6.68%	12	0.45%	8	0.30%	641	24.06%	8	0.30%	206	7.73%	5	0.19%
Wicomico	1,666	178	10.68%	6	0.36%	4	0.24%	337	20.23%	9	0.54%	62	3.72%	6	0.36%
Worcester	720	55	7.64%	2	0.28%	4	0.56%	229	31.81%	0	0.00%	11	1.53%	2	0.28%
Total Local Education Agencies	111,498	6,450	5.78%	632	0.57%	292	0.26%	28,487	25.55%	373	0.33%	9,676	8.68%	528	0.47%
Department of Juvenile Services	119	3	2.50%	0	0.00%	0	0.00%	2	1.67%	0	0.00%	52	43.33%	0	0.00%
Baltimore City Juvenile Justice Center	16	2	12.50%	0	0.00%	0	0.00%	0	0.00%	0	0.00%	7	43.75%	0	0.00%
Carter Center	9	0	0.00%	0	0.00%	0	0.00%	0	0.00%	0	0.00%	3	33.33%	0	0.00%
Cheltenham Detention Facility	13	0	0.00%	0	0.00%	0	0.00%	0	0.00%	0	0.00%	4	30.77%	0	0.00%
Cumberland Youth Services Ctr.	31	0	0.00%	0	0.00%	0	0.00%	2	6.45%	0	0.00%	10	32.26%	0	0.00%
Lower Eastern Shore Children's Center	3	0	0.00%	0	0.00%	0	0.00%	0	0.00%	0	0.00%	1	33.33%	0	0.00%
Maryland Youth Residence Ctr.	4	0	0.00%	0	0.00%	0	0.00%	0	0.00%	0	0.00%	3	75.00%	0	0.00%
Noyse Childrens Center	7	0	0.00%	0	0.00%	0	0.00%	0	0.00%	0	0.00%	5	71.43%	0	0.00%
Schaffer House	3	0	0.00%	0	0.00%	0	0.00%	0	0.00%	0	0.00%	0	0.00%	0	0.00%
Thomas JS Waxter Children's Ctr.	5	1	20.00%	0	0.00%	0	0.00%	0	0.00%	0	0.00%	3	60.00%	0	0.00%
Thomas O'Farrell	25	0	0.00%	0	0.00%	0	0.00%	0	0.00%	0	0.00%	14	56.00%	0	0.00%
Western Maryland Children's Detention Ctr.	3	0	0.00%	0	0.00%	0	0.00%	0	0.00%	0	0.00%	2	66.67%	0	0.00%
Adult Corrections	115	1	0.87%	0	0.00%	0	0.00%	0	0.00%	1	0.87%	22	19.13%	0	0.00%
Charles H. Hickey School	48	0	0.00%	0	0.00%	0	0.00%	0	0.00%	0	0.00%	25	52.08%	0	0.00%
Maryland School for the Blind	180	0	0.00%	0	0.00%	0	0.00%	0	0.00%	160	88.89%	0	0.00%	0	0.00%
Maryland School for the Deaf	428	0	0.00%	0	0.00%	410	95.79%	0	0.00%	0	0.00%	0	0.00%	0	0.00%
Total Public Agencies	890	4	0.45%	0	0.00%	410	46.07%	2	0.22%	161	18.09%	99	11.12%	0	0.00%

\*This Table includes Eligibility 1 and 2 students



Table 2 (Continued)

Students with Disabilities by Disability  
Ages 3-21  
October 29, 2004

	Other Health Impaired		Specific Learning Disabilities		Deaf/Blind		Multiple Disabilities		Autism		Traumatic Brain Injury		Developmental Delay	
	Total	Percent	Total	Percent	Total	Percent	Total	Percent	Total	Percent	Total	Percent	Total	Percent
Total State	12,166	10.82%	38,580	34.33%	27	0.02%	5,278	4.70%	4,659	4.15%	334	0.30%	4,230	3.76%
Allegany	157	10.13%	679	43.81%	0	0.00%	115	7.42%	19	1.23%	3	0.19%	44	2.84%
Anne Arundel	933	9.30%	3,671	36.61%	2	0.02%	766	7.64%	506	5.05%	30	0.30%	370	3.69%
Baltimore City	1,944	13.04%	4,403	29.54%	1	0.01%	171	1.15%	462	3.10%	60	0.40%	208	1.40%
Edison Schools	35	21.88%	42	26.25%	0	0.00%	2	1.25%	0	0.00%	2	1.25%	1	0.63%
Baltimore	1,565	11.15%	4,934	35.15%	1	0.01%	355	2.53%	721	5.14%	35	0.25%	855	6.09%
Calvert	225	9.63%	992	42.45%	0	0.00%	44	1.88%	123	5.26%	4	0.17%	44	1.88%
Caroline	7	0.99%	268	38.01%	0	0.00%	41	5.82%	25	3.55%	1	0.14%	1	0.14%
Carroll	354	9.58%	1,185	32.07%	1	0.03%	137	3.71%	111	3.00%	14	0.38%	112	3.03%
Cecil	218	8.69%	1,069	42.59%	0	0.00%	135	5.38%	61	2.43%	9	0.36%	69	2.75%
Charles	201	8.29%	638	26.30%	0	0.00%	56	2.31%	95	3.92%	12	0.49%	126	5.19%
Dorchester	14	2.59%	238	43.99%	0	0.00%	48	8.87%	13	2.40%	1	0.18%	9	1.66%
Frederick	671	13.71%	1,602	32.73%	0	0.00%	114	2.33%	254	5.19%	11	0.22%	82	1.68%
Garrett	23	3.33%	301	43.62%	0	0.00%	67	9.71%	4	0.58%	0	0.00%	0	0.00%
Harford	1,142	18.81%	2,034	33.51%	1	0.02%	225	3.71%	160	2.64%	21	0.35%	135	2.22%
Howard	707	14.16%	1,178	23.59%	1	0.02%	205	4.10%	409	8.19%	14	0.28%	264	5.29%
Kent	31	8.64%	171	47.63%	0	0.00%	6	1.67%	9	2.51%	0	0.00%	30	8.36%
Montgomery	1,821	10.33%	6,134	34.80%	1	0.01%	630	3.57%	800	4.54%	42	0.24%	551	3.13%
Prince George's	1,160	7.82%	5,110	34.46%	3	0.02%	1,710	11.53%	606	4.09%	47	0.32%	1,109	7.48%
Queen Anne's	69	6.78%	586	57.56%	0	0.00%	23	2.26%	20	1.96%	3	0.29%	68	6.68%
St. Mary's	185	8.24%	988	44.01%	0	0.00%	28	1.25%	76	3.39%	8	0.36%	56	2.49%
Somerset	22	5.98%	178	48.37%	0	0.00%	21	5.71%	12	3.26%	1	0.27%	18	4.89%
Talbot	27	5.73%	160	33.97%	0	0.00%	18	3.82%	14	2.97%	2	0.42%	1	0.21%
Washington	418	15.69%	976	36.64%	0	0.00%	95	3.57%	79	2.97%	6	0.23%	32	1.20%
Wicomico	152	9.12%	597	35.83%	1	0.06%	207	12.42%	56	3.36%	6	0.36%	45	2.70%
Worcester	60	8.33%	307	42.64%	0	0.00%	24	3.33%	24	3.33%	2	0.28%	0	0.00%
Total Local Education Agencies	12,141	10.89%	38,441	34.48%	12	0.01%	5,243	4.70%	4,659	4.18%	334	0.30%	4,230	3.79%
Department of Juvenile Services	17	14.17%	39	32.50%	0	0.00%	6	5.00%	0	0.00%	0	0.00%	0	0.00%
Baltimore City Juvenile Justice Center	3	18.75%	4	25.00%	0	0.00%	0	0.00%	0	0.00%	0	0.00%	0	0.00%
Carter Center	1	11.11%	5	55.56%	0	0.00%	0	0.00%	0	0.00%	0	0.00%	0	0.00%
Cheltenham Detention Facility	1	7.69%	4	30.77%	0	0.00%	4	30.77%	0	0.00%	0	0.00%	0	0.00%
Cumberland Youth Services Ctr.	7	22.58%	11	35.48%	0	0.00%	1	3.23%	0	0.00%	0	0.00%	0	0.00%
Lower Eastern Shore Children's Center	0	0.00%	2	66.67%	0	0.00%	0	0.00%	0	0.00%	0	0.00%	0	0.00%
Maryland Youth Residence Center	0	0.00%	1	25.00%	0	0.00%	0	0.00%	0	0.00%	0	0.00%	0	0.00%
Noyse Childrens Center	0	0.00%	2	28.57%	0	0.00%	0	0.00%	0	0.00%	0	0.00%	0	0.00%
Schaffer House	2	66.67%	1	33.33%	0	0.00%	0	0.00%	0	0.00%	0	0.00%	0	0.00%
Thomas JS Waxter Children's Ctr.	0	0.00%	0	0.00%	0	0.00%	1	20.00%	0	0.00%	0	0.00%	0	0.00%
Thomas O'Farrell	3	12.00%	8	32.00%	0	0.00%	0	0.00%	0	0.00%	0	0.00%	0	0.00%
Western Maryland Children's Detention Ctr.	0	0.00%	1	33.33%	0	0.00%	0	0.00%	0	0.00%	0	0.00%	0	0.00%
Adult Corrections	2	1.74%	87	75.65%	0	0.00%	2	1.74%	0	0.00%	0	0.00%	0	0.00%
Charles H. Hickey School	6	12.50%	13	27.08%	0	0.00%	4	8.33%	0	0.00%	0	0.00%	0	0.00%
Maryland School for the Blind	0	0.00%	0	0.00%	15	8.33%	5	2.78%	0	0.00%	0	0.00%	0	0.00%
Maryland School for the Deaf	0	0.00%	0	0.00%	0	0.00%	18	4.21%	0	0.00%	0	0.00%	0	0.00%
Total Public Agencies	25	2.81%	139	15.62%	15	1.69%	35	3.93%	0	0.00%	0	0.00%	0	0.00%

\*This Table includes Eligibility 1 and 2 students

Figure 1  
Students with Disabilities by Disability  
Ages 3-21  
October 29, 2004

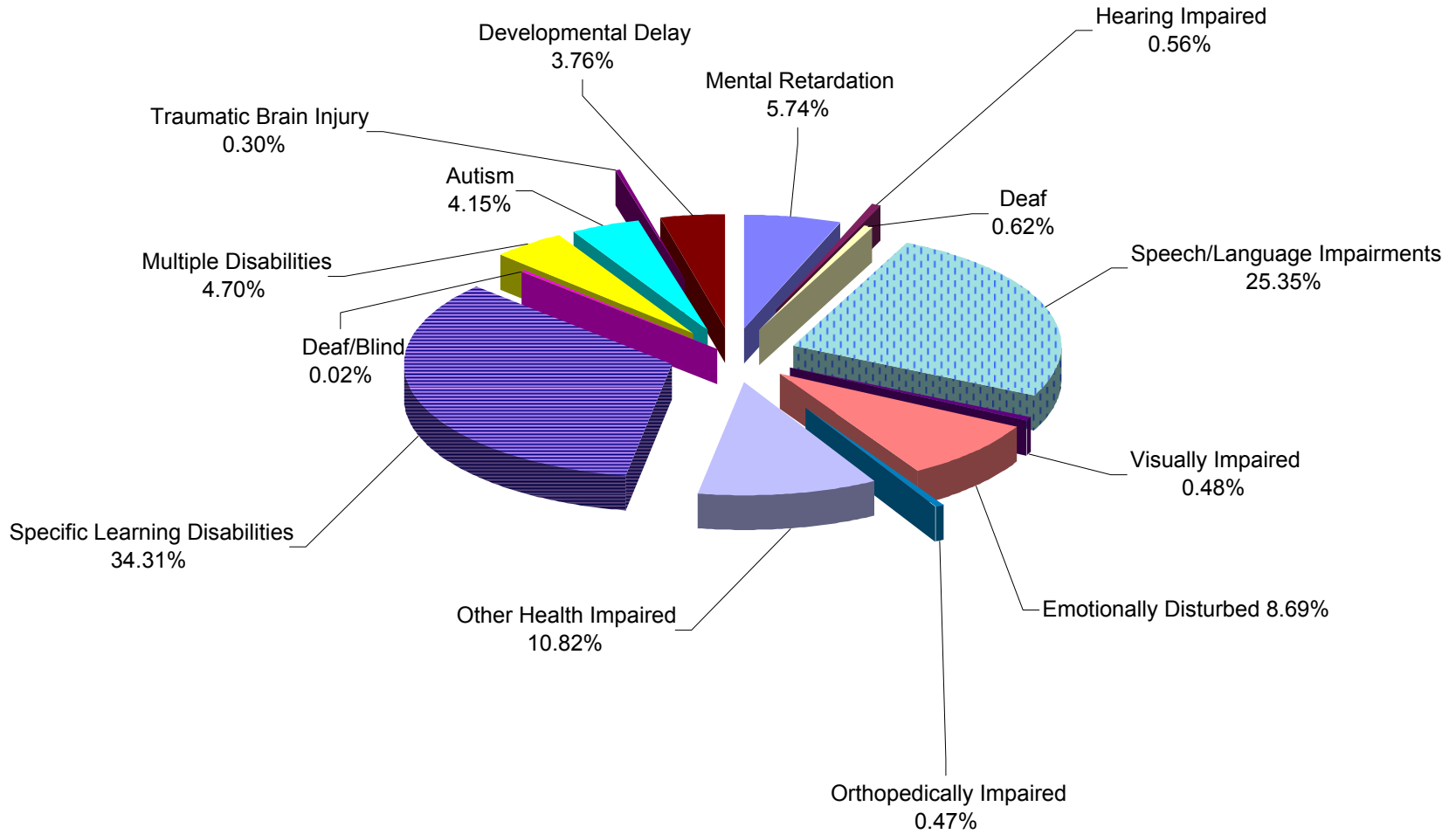
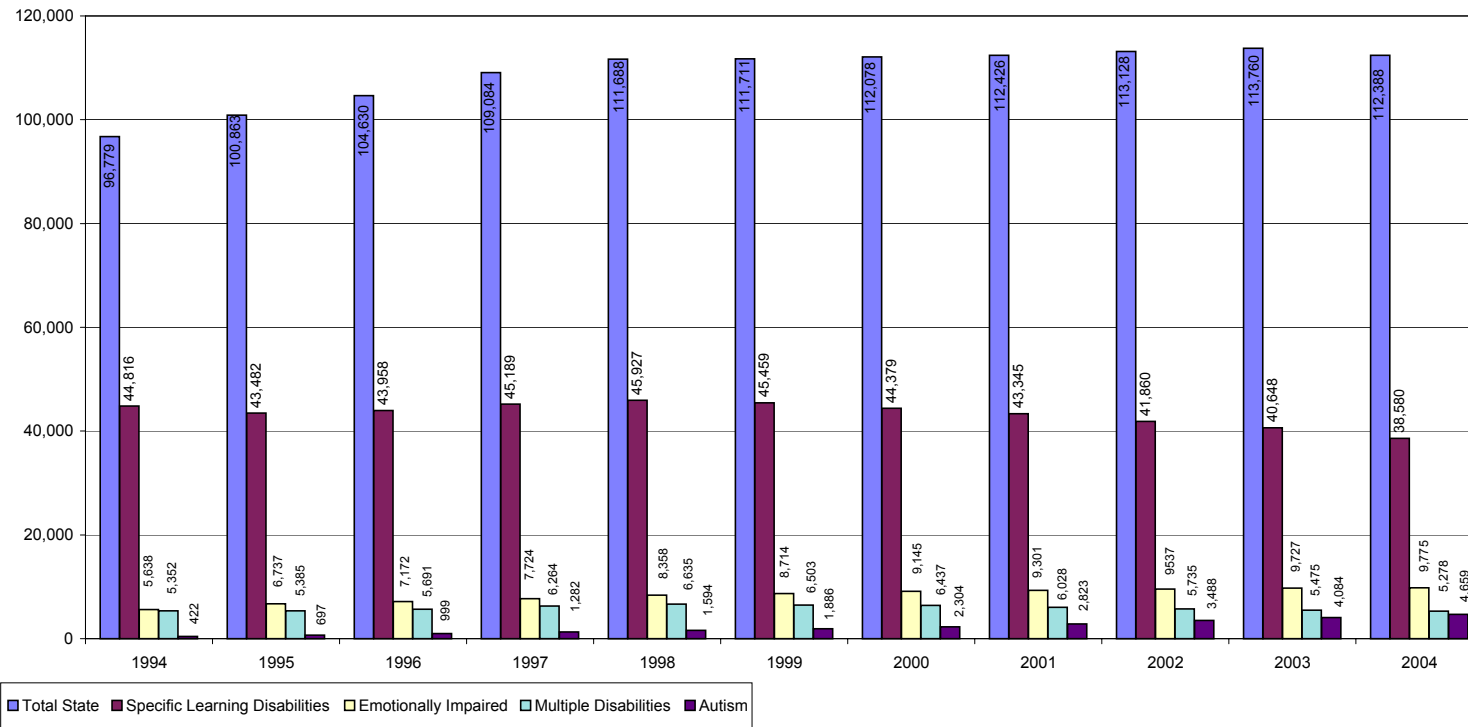


Table 3

Students with Disabilities Trend in High Growth Disabilities  
Ages 3-21  
December 1, 1994 - October 29, 2004

	1994	1995	1996	1997	1998	1999	2000	2001	2002	2003	2004
Total State	96,779	100,863	104,630	109,084	111,688	111,711	112,078	112,426	113,128	113,760	112,388
Specific Learning Disabilities	44,816	43,482	43,958	45,189	45,927	45,459	44,379	43,345	41,860	40,648	38,580
Emotionally Impaired	5,638	6,737	7,172	7,724	8,358	8,714	9,145	9,301	9,537	9,727	9,775
Multiple Disabilities	5,352	5,385	5,691	6,264	6,635	6,503	6,437	6,028	5,735	5,475	5,278
Autism	422	697	999	1,282	1,594	1,886	2,304	2,823	3,488	4,084	4,659



\*This Table includes Eligibility 1 and 2 students

Table 4  
Students with Disabilities by Age  
October 29, 2004

	Total	Age																		
		3	4	5	6	7	8	9	10	11	12	13	14	15	16	17	18	19	20	21
Total State	112,388	2,947	4,183	5,097	6,045	6,387	7,132	8,023	8,621	8,738	9,015	9,340	9,258	8,957	8,018	6,469	2,423	1,005	612	118
Allegany	1,550	35	53	63	92	107	118	119	115	135	114	128	107	136	108	77	23	11	8	1
Anne Arundel	10,028	370	416	428	465	445	568	706	726	746	820	850	851	862	764	657	211	91	52	0
Baltimore City	14,904	237	476	558	730	831	830	917	1,090	1,195	1,329	1,473	1,441	1,283	1,065	792	364	169	104	20
Edison Schools	160	0	8	10	12	11	18	29	35	21	13	3	0	0	0	0	0	0	0	0
Baltimore	14,035	404	597	803	875	895	894	1,019	1,026	1,028	1,080	1,125	1,115	1,072	956	711	245	117	63	10
Calvert	2,336	54	95	110	116	144	167	188	173	172	197	188	194	184	160	120	54	12	7	1
Caroline	705	18	20	37	52	45	49	56	52	53	59	60	55	42	62	30	13	1	1	0
Carroll	3,695	99	135	158	259	224	206	243	280	279	294	306	294	292	302	232	52	23	14	3
Cecil	2,510	50	79	157	164	172	170	175	158	183	182	205	191	235	181	134	50	16	6	2
Charles	2,426	77	104	140	171	170	177	179	194	165	158	150	168	155	173	137	60	32	15	1
Dorchester	541	13	18	23	29	31	44	36	44	47	37	41	50	51	29	29	10	4	4	1
Frederick	4,895	125	159	203	259	291	372	401	457	376	397	395	348	374	331	296	74	24	13	0
Garrett	690	11	17	36	37	37	32	51	45	51	58	72	70	64	37	42	17	5	7	1
Harford	6,064	155	257	282	357	374	435	513	514	502	475	514	488	432	343	288	87	30	9	9
Howard	4,993	184	235	281	295	316	307	321	338	357	354	434	384	387	334	295	102	37	29	3
Kent	359	9	11	20	17	24	28	28	35	29	27	23	29	30	21	9	13	3	3	0
Montgomery	17,628	482	678	753	853	916	1,163	1,327	1,391	1,431	1,444	1,446	1,449	1,357	1,245	1,044	368	165	101	15
Prince George's	14,828	416	515	581	695	707	843	946	1,168	1,269	1,267	1,195	1,264	1,247	1,154	945	382	130	87	17
Queen Anne's	1,018	21	37	60	54	65	61	69	69	80	87	81	88	78	75	58	20	11	4	0
St. Mary's	2,245	52	82	115	142	172	167	210	207	152	155	163	161	133	144	116	44	18	10	2
Somerset	368	9	9	16	19	15	27	23	41	28	30	25	28	32	28	28	4	4	1	1
Talbot	470	16	28	24	25	36	28	46	35	31	26	33	35	33	29	30	8	2	4	1
Washington	2,664	46	76	104	155	184	216	190	208	170	179	200	223	208	213	181	72	24	10	5
Wicomico	1,666	42	42	76	96	111	130	147	137	151	114	100	118	113	122	85	53	21	7	1
Worcester	720	13	18	38	51	36	40	54	49	48	66	68	53	66	52	43	18	1	6	0
Total Local Education Agencies	111,498	2,938	4,165	5,076	6,020	6,359	7,090	7,993	8,587	8,699	8,962	9,278	9,204	8,866	7,928	6,379	2,344	951	565	94
Department of Juvenile Services	119	0	0	0	0	0	0	0	0	0	1	9	5	30	30	30	13	1	0	0
Adult Corrections	115	0	0	0	0	0	0	0	0	0	0	0	0	0	2	3	27	34	35	14
Charles H. Hickey School	48	0	0	0	0	0	0	0	0	0	0	0	7	8	17	11	4	1	0	0
Maryland School for the Blind	180	4	6	4	4	10	12	7	5	9	10	14	9	13	14	11	19	10	12	7
Maryland School for the Deaf	428	5	12	17	21	18	30	23	29	30	42	39	33	40	27	35	16	8	0	3
Total Public Agencies	890	9	18	21	25	28	42	30	34	39	53	62	54	91	90	90	79	54	47	24

\*This Table includes Eligibility 1 and 2 students

Table 5

Students with Disabilities by Age and Disability  
October 29, 2004

Age	Total	Mental Retardation	Hearing Impaired	Deaf	Speech/ Language	Visually Impaired	Emotion-ally Disturbed	Orthope-dically Impaired	Other Health Impaired	Specific Learning Disabilities	Deaf/ Blind	Multiple Disabilities	Autism	Traumatic Brain Injury	Develop-mental Delay
Total	112,388	6,454	632	702	28,489	534	9,775	528	12,166	38,580	27	5,278	4,659	334	4,230
3	2,947	9	21	23	1,494	15	1	24	55	6	3	51	123	5	1,117
4	4,183	22	22	22	2,357	19	3	31	61	2	3	88	185	4	1,364
5	5,097	78	36	28	3,289	25	17	48	134	29	1	101	275	6	1,030
3-5	12,227	109	79	73	7,140	59	21	103	250	37	7	240	583	15	3,511
6	6,045	169	40	39	3,967	40	85	46	349	271	0	156	373	13	497
7	6,387	266	50	36	3,521	43	178	36	588	891	1	204	402	12	159
8	7,132	272	51	56	3,083	28	289	36	789	1,828	2	252	386	13	47
9	8,023	335	48	43	2,683	30	412	42	1,005	2,708	2	318	363	18	16
10	8,621	455	53	45	2,141	26	597	40	1,183	3,313	3	352	393	20	0
11	8,738	473	46	50	1,513	25	804	32	1,288	3,698	1	434	356	18	0
6-11	44,946	1,970	288	269	16,908	192	2,365	232	5,202	12,709	9	1,716	2,273	94	719
12	9,015	561	39	58	1,235	44	920	41	1,342	3,868	0	463	415	29	0
13	9,340	608	52	60	971	42	1,192	24	1,349	4,236	3	476	299	28	0
14	9,258	551	37	50	759	40	1,268	32	1,232	4,513	0	455	287	34	0
15	8,957	584	50	56	566	30	1,334	21	1,041	4,538	0	485	216	36	0
16	8,018	567	33	47	498	36	1,198	31	879	4,073	2	446	167	41	0
17	6,469	529	38	50	307	39	923	22	638	3,336	0	396	168	23	0
12-17	51,057	3,400	249	321	4,336	231	6,835	171	6,481	24,564	5	2,721	1,552	191	0
18	2,423	380	14	21	85	20	383	12	164	953	2	270	103	16	0
19	1,005	303	1	14	18	10	116	7	49	217	2	181	76	11	0
20	612	256	1	1	1	17	43	3	19	79	0	123	63	6	0
21	118	36	0	3	1	5	12	0	1	21	2	27	9	1	0
18-21	4,158	975	16	39	105	52	554	22	233	1,270	6	601	251	34	0

\*This Table includes Eligibility 1 and 2 students

Table 6  
 Students with Disabilities by Grade  
 Kindergarten, Preschool, and Grades 1 - 6  
 October 29, 2004

	KINDER- GARTEN		PRE- SCHOOL		1		2		3		4		5		6		
	Grand Total	Total	Percent	Total	Percent	Total	Percent	Total	Percent	Total	Percent	Total	Percent	Total	Percent	Total	Percent
Total State	112,388	4,995	4.44%	7,735	6.88%	6,405	5.70%	6,867	6.11%	7,538	6.70%	8,301	7.38%	8,935	7.95%	9,216	8.20%
Allegany	1,550	58	3.74%	87	5.61%	95	6.13%	108	6.97%	125	8.06%	116	7.48%	135	8.71%	119	7.68%
Anne Arundel	10,028	456	4.55%	830	8.28%	447	4.46%	511	5.10%	594	5.92%	686	6.84%	757	7.55%	822	8.20%
Baltimore City	14,904	493	3.31%	880	5.90%	911	6.11%	959	6.43%	955	6.41%	1,096	7.35%	1,220	8.19%	1,240	8.32%
Edison Schools	160	9	5.63%	9	5.63%	10	6.25%	18	11.25%	15	9.38%	33	20.63%	38	23.75%	27	16.88%
Baltimore	14,035	910	6.48%	991	7.06%	869	6.19%	899	6.40%	960	6.84%	1,063	7.57%	1,085	7.73%	1,141	8.13%
Calvert	2,336	113	4.84%	163	6.97%	110	4.71%	163	6.97%	184	7.87%	183	7.83%	184	7.87%	185	7.92%
Caroline	705	53	7.52%	15	2.13%	45	6.38%	75	10.64%	55	7.80%	50	7.09%	47	6.67%	69	9.79%
Carroll	3,695	162	4.38%	243	6.58%	259	7.01%	229	6.20%	226	6.12%	253	6.85%	274	7.42%	270	7.31%
Cecil	2,510	156	6.22%	130	5.18%	182	7.25%	193	7.69%	166	6.61%	176	7.01%	178	7.09%	191	7.61%
Charles	2,426	127	5.23%	207	8.53%	180	7.42%	186	7.67%	190	7.83%	175	7.21%	193	7.96%	175	7.21%
Dorchester	541	24	4.44%	31	5.73%	34	6.28%	33	6.10%	37	6.84%	41	7.58%	36	6.65%	56	10.35%
Frederick	4,895	191	3.90%	354	7.23%	268	5.47%	318	6.50%	369	7.54%	416	8.50%	437	8.93%	390	7.97%
Garrett	690	45	6.52%	52	7.54%	33	4.78%	37	5.36%	42	6.09%	50	7.25%	55	7.97%	62	8.99%
Harford	6,064	278	4.58%	455	7.50%	384	6.33%	427	7.03%	476	7.84%	522	8.60%	483	7.96%	606	9.98%
Howard	4,993	266	5.33%	372	7.45%	318	6.37%	312	6.25%	313	6.27%	311	6.23%	339	6.79%	367	7.35%
Kent	359	20	5.57%	20	5.57%	16	4.46%	28	7.80%	31	8.64%	24	6.69%	34	9.47%	33	9.19%
Montgomery	17,628	842	4.76%	1,095	6.19%	852	4.82%	957	5.41%	1,179	6.67%	1,347	7.62%	1,390	7.86%	1,465	8.28%
Prince George's	14,828	406	2.74%	1,186	8.00%	746	5.03%	725	4.89%	891	6.01%	967	6.52%	1,261	8.50%	1,270	8.56%
Queen Anne's	1,018	7	0.69%	113	11.10%	59	5.80%	60	5.89%	69	6.78%	64	6.29%	72	7.07%	85	8.35%
St. Mary's	2,245	107	4.76%	139	6.19%	154	6.86%	175	7.79%	178	7.93%	218	9.71%	206	9.17%	149	6.63%
Somerset	368	19	5.16%	12	3.26%	20	5.43%	22	5.98%	25	6.79%	33	8.97%	38	10.33%	33	8.97%
Talbot	470	21	4.46%	46	9.77%	33	7.01%	35	7.43%	29	6.16%	40	8.49%	42	8.92%	37	7.86%
Washington	2,664	103	3.87%	141	5.29%	179	6.72%	195	7.32%	223	8.37%	199	7.47%	191	7.17%	168	6.31%
Wicomico	1,666	78	4.68%	91	5.46%	122	7.32%	145	8.70%	120	7.20%	150	9.00%	151	9.06%	133	7.98%
Worcester	720	35	4.86%	41	5.69%	45	6.25%	33	4.58%	48	6.67%	57	7.92%	50	6.94%	45	6.25%
Total Local Education Agencies	111,498	4,979	4.46%	7,703	6.90%	6,371	5.71%	6,843	6.13%	7,500	6.72%	8,270	7.41%	8,896	7.97%	9,138	8.19%
Department of Juvenile Services	119	0	0.00%	0	0.00%	0	0.00%	0	0.00%	0	0.00%	0	0.00%	0	0.00%	9	7.56%
Adult Corrections	115	0	0.00%	0	0.00%	0	0.00%	0	0.00%	0	0.00%	0	0.00%	0	0.00%	1	0.87%
Charles H. Hickey School	48	0	0.00%	0	0.00%	0	0.00%	0	0.00%	1	2.08%	0	0.00%	1	2.08%	3	6.25%
Maryland School for the Blind	180	2	1.11%	10	5.56%	10	5.56%	5	2.78%	10	5.56%	10	5.56%	6	3.33%	10	5.56%
Maryland School for the Deaf	428	14	3.27%	22	5.14%	24	5.61%	19	4.44%	27	6.31%	21	4.91%	32	7.48%	55	12.85%
Total Public Agencies	890	16	1.80%	32	3.60%	34	3.82%	24	2.70%	38	4.27%	31	3.48%	39	4.38%	78	8.76%

\*As of 9/28/04 the State Board of Education discontinued the use of ungraded elementary and ungraded secondary

\*\*This Table includes Eligibility 1 and 2 students

Table 6 (continued)

Students with Disabilities by Grade  
 Grades 7 - 12  
 October 29, 2004

	Grade											
	7		8		9		10		11		12	
	Total	Percent	Total	Percent	Total	Percent	Total	Percent	Total	Percent	Total	Percent
Total State	9,289	8.26%	9,391	8.35%	11,150	9.92%	8,319	7.40%	7,348	6.53%	6,899	6.13%
Allegany	113	7.29%	132	8.52%	113	7.29%	121	7.81%	122	7.87%	106	6.84%
Anne Arundel	811	8.09%	804	8.02%	1,014	10.11%	840	8.38%	914	9.11%	542	5.40%
Baltimore City	1,504	10.09%	1,394	9.35%	1,889	12.67%	955	6.41%	652	4.37%	756	5.07%
Edison Schools	1	0.63%	0	0.00%	0	0.00%	0	0.00%	0	0.00%	0	0.00%
Baltimore	1,066	7.59%	1,145	8.16%	1,223	8.71%	982	7.00%	836	5.96%	865	6.16%
Calvert	169	7.23%	221	9.46%	212	9.07%	181	7.74%	142	6.08%	126	5.39%
Caroline	50	7.09%	61	8.65%	61	8.65%	59	8.37%	34	4.82%	31	4.40%
Carroll	313	8.47%	304	8.23%	319	8.63%	297	8.04%	272	7.36%	274	7.42%
Cecil	188	7.49%	204	8.13%	236	9.40%	211	8.41%	137	5.46%	162	6.45%
Charles	169	6.97%	142	5.85%	200	8.24%	154	6.35%	154	6.35%	174	7.17%
Dorchester	41	7.58%	45	8.32%	70	12.94%	35	6.47%	29	5.36%	29	5.36%
Frederick	388	7.93%	394	8.05%	420	8.58%	366	7.48%	287	5.86%	297	6.07%
Garrett	67	9.71%	73	10.58%	72	10.43%	22	3.19%	38	5.51%	42	6.09%
Harford	457	7.53%	569	9.37%	576	9.49%	332	5.47%	283	4.66%	216	3.56%
Howard	385	7.71%	413	8.27%	444	8.89%	384	7.69%	375	7.51%	394	7.89%
Kent	24	6.69%	25	6.96%	38	10.58%	29	8.08%	17	4.74%	20	5.57%
Montgomery	1,455	8.23%	1,467	8.30%	1,675	9.47%	1,313	7.42%	1,340	7.58%	1,251	7.07%
Prince George's	1,348	9.09%	1,239	8.36%	1,669	11.26%	1,252	8.44%	1,000	6.74%	868	5.85%
Queen Anne's	91	8.94%	81	7.96%	92	9.04%	88	8.64%	68	6.68%	69	6.78%
St. Mary's	174	7.75%	164	7.30%	220	9.80%	147	6.54%	113	5.03%	101	4.50%
Somerset	25	6.79%	31	8.42%	26	7.07%	40	10.87%	29	7.88%	15	4.08%
Talbot	30	6.37%	29	6.16%	38	8.07%	29	6.16%	27	5.73%	34	7.22%
Washington	190	7.13%	204	7.66%	224	8.41%	203	7.62%	199	7.47%	245	9.20%
Wicomico	113	6.78%	115	6.90%	133	7.98%	120	7.20%	103	6.18%	92	5.52%
Worcester	65	9.03%	65	9.03%	58	8.06%	60	8.33%	54	7.50%	64	8.89%
Total Local Education Agencies	9,237	8.28%	9,321	8.35%	11,022	9.88%	8,220	7.37%	7,225	6.48%	6,773	6.07%
Department of Juvenile Services	17	14.29%	14	11.76%	42	35.29%	20	16.81%	13	10.92%	4	3.36%
Adult Corrections	1	0.87%	1	0.87%	10	8.70%	17	14.78%	63	54.78%	22	19.13%
Charles H. Hickey School	1	2.08%	6	12.50%	22	45.83%	11	22.92%	3	6.25%	0	0.00%
Maryland School for the Blind	9	5.00%	11	6.11%	16	8.89%	13	7.22%	10	5.56%	58	32.22%
Maryland School for the Deaf	24	5.61%	38	8.88%	38	8.88%	38	8.88%	34	7.94%	42	9.81%
Total Public Agencies	52	5.84%	70	7.87%	128	14.38%	99	11.12%	123	13.82%	126	14.16%

\*As of 9/28/04 the State Board of Education discontinued the use of ungraded elementary and ungraded secondary

\*This Table includes Eligibility 1 and 2 students

Table 7

Students with Disabilities by Grade and Disability  
October 29, 2004

	Grand		Mental Retardation		Hearing Impaired		Deaf		Speech/ Language		Visually Impaired		Emotion-ally Disturbed		Orthope-dically Impaired	
	Total	Percent	Total	Percent	Total	Percent	Total	Percent	Total	Percent	Total	Percent	Total	Percent	Total	Percent
Total	112,388		6,454	5.74%	632	0.56%	702	0.62%	28,489	25.35%	534	0.48%	9,775	8.70%	528	0.47%
Kindergarten	4,995	4.44%	91	1.94%	32	0.68%	32	0.68%	3,218	68.53%	23	0.49%	21	0.45%	48	1.02%
Preschool	7,735	6.88%	49	0.78%	54	0.86%	51	0.81%	4,074	65.08%	34	0.54%	25	0.40%	71	1.13%
Grade 1	6,405	5.70%	188	3.25%	34	0.59%	37	0.64%	4,116	71.10%	47	0.81%	91	1.57%	52	0.90%
Grade 2	6,867	6.11%	293	4.47%	52	0.79%	41	0.63%	3,578	54.63%	32	0.49%	197	3.01%	35	0.53%
Grade 3	7,538	6.71%	311	4.16%	65	0.87%	48	0.64%	3,066	41.02%	39	0.52%	335	4.48%	38	0.51%
Grade 4	8,301	7.39%	362	4.03%	47	0.52%	41	0.46%	2,596	28.91%	28	0.31%	498	5.55%	39	0.43%
Grade 5	8,935	7.95%	484	5.08%	49	0.51%	50	0.52%	2,101	22.06%	28	0.29%	682	7.16%	40	0.42%
Grade 6	9,216	8.20%	549	5.63%	42	0.43%	74	0.76%	1,467	15.04%	31	0.32%	893	9.16%	34	0.35%
Grade 7	9,289	8.27%	587	5.96%	46	0.47%	49	0.50%	1,240	12.60%	38	0.39%	1,055	10.72%	40	0.41%
Grade 8	9,391	8.36%	586	6.49%	48	0.53%	55	0.61%	901	9.99%	43	0.48%	1,203	13.33%	22	0.24%
Grade 9	11,150	9.92%	730	7.08%	46	0.45%	50	0.48%	805	7.81%	43	0.42%	1,721	16.69%	30	0.29%
Grade 10	8,319	7.40%	623	7.91%	44	0.56%	57	0.72%	508	6.45%	30	0.38%	1,224	15.53%	15	0.19%
Grade 11	7,348	6.54%	641	10.17%	32	0.51%	54	0.86%	446	7.07%	41	0.65%	982	15.58%	34	0.54%
Grade 12	6,899	6.14%	960	17.26%	41	0.74%	63	1.13%	373	6.71%	77	1.38%	848	15.24%	30	0.54%

\*As of 9/28/04 the State Board of Education discontinued the use of ungraded elementary and ungraded secondary

\*\*This Table includes Eligibility 1 and 2 students



Table 7 (continued)  
 Students with Disabilities by Grade and Disability  
 October 29, 2004

	Other Health Impaired		Specific Learning Disabilities		Multiple Disabilities		Deaf/Blind		Autism		Traumatic Brain Injury		Developmental Delay	
	Total	Percent	Total	Percent	Total	Percent	Total	Percent	Total	Percent	Total	Percent	Total	Percent
Total	12,166	10.82%	38,580	34.33%	5,278	4.70%	27	0.02%	4,659	4.15%	334	0.30%	4,230	3.76%
Kindergarten	167	3.56%	55	1.17%	102	2.17%	1	0.02%	286	6.09%	4	0.09%	915	19.48%
Preschool	136	2.17%	19	0.30%	151	2.41%	6	0.10%	363	5.80%	9	0.14%	2,693	43.02%
Grade 1	394	6.81%	434	7.50%	174	3.01%	1	0.02%	377	6.51%	15	0.26%	445	7.69%
Grade 2	681	10.40%	1,210	18.48%	228	3.48%	0	0.00%	394	6.02%	15	0.23%	111	1.69%
Grade 3	813	10.88%	2,081	27.84%	269	3.60%	2	0.03%	417	5.58%	14	0.19%	40	0.54%
Grade 4	1,106	12.31%	2,887	32.15%	311	3.46%	2	0.02%	350	3.90%	21	0.23%	13	0.14%
Grade 5	1,184	12.43%	3,478	36.51%	426	4.47%	1	0.01%	391	4.10%	20	0.21%	1	0.01%
Grade 6	1,400	14.36%	3,899	39.98%	412	4.22%	3	0.03%	386	3.96%	26	0.27%	0	0.00%
Grade 7	1,311	13.32%	3,994	40.58%	519	5.27%	1	0.01%	379	3.85%	30	0.30%	0	0.00%
Grade 8	1,306	14.47%	4,417	48.95%	457	5.06%	1	0.01%	326	3.61%	25	0.28%	1	0.01%
Grade 9	1,430	13.87%	5,411	52.48%	580	5.63%	1	0.01%	259	2.51%	44	0.43%	0	0.00%
Grade 10	927	11.76%	4,141	52.55%	497	6.31%	0	0.00%	216	2.74%	37	0.47%	0	0.00%
Grade 11	736	11.68%	3,570	56.63%	543	8.61%	1	0.02%	230	3.65%	38	0.60%	0	0.00%
Grade 12	575	10.34%	2,984	53.64%	609	10.95%	7	0.13%	285	5.12%	36	0.65%	11	0.20%

\*As of 9/28/04 the State Board of Education discontinued the use of ungraded elementary and ungraded secondary

\*\*This Table includes Eligibility 1 and 2 students

Table 8  
 Students with Disabilities by Gender  
 Ages 3-21  
 October 29, 2004

	Grand Total	Male		Female	
		Total	Percent	Total	Percent
Total State	112,388	77,221	68.7%	35,167	31.3%
Allegany	1,550	1,024	66.1%	526	33.9%
Anne Arundel	10,028	6,892	68.7%	3,136	31.3%
Baltimore City	14,904	10,320	69.2%	4,584	30.8%
Edison Schools	160	110	68.8%	50	31.3%
Baltimore	14,035	9,695	69.1%	4,340	30.9%
Calvert	2,336	1,591	68.1%	745	31.9%
Caroline	705	477	67.7%	228	32.3%
Carroll	3,695	2,559	69.3%	1,136	30.7%
Cecil	2,510	1,707	68.0%	803	32.0%
Charles	2,426	1,718	70.8%	708	29.2%
Dorchester	541	364	67.3%	177	32.7%
Frederick	4,895	3,359	68.6%	1,536	31.4%
Garrett	690	475	68.8%	215	31.2%
Harford	6,064	4,099	67.6%	1,965	32.4%
Howard	4,993	3,474	69.6%	1,519	30.4%
Kent	359	255	71.0%	104	29.0%
Montgomery	17,628	12,003	68.1%	5,625	31.9%
Prince George's	14,828	10,293	69.4%	4,535	30.6%
Queen Anne's	1,018	703	69.1%	315	30.9%
St. Mary's	2,245	1,506	67.1%	739	32.9%
Somerset	368	257	69.8%	111	30.2%
Talbot	470	323	68.7%	147	31.3%
Washington	2,664	1,781	66.9%	883	33.1%
Wicomico	1,666	1,133	68.0%	533	32.0%
Worcester	720	494	68.6%	226	31.4%
<b>Total Local Education Agencies</b>	<b>111,498</b>	<b>76,612</b>	<b>68.7%</b>	<b>34,886</b>	<b>31.3%</b>
Department of Juvenile Services	119	113	95.0%	6	5.0%
Baltimore City Juvenile Justice Center	16	16	100.0%	0	0.0%
Carter Center	9	8	88.9%	1	11.1%
Cheltenham Detention Center	13	13	100.0%	0	0.0%
Cumberland Youth Services Ctr.	31	31	100.0%	0	0.0%
Lower Eastern Shore Children's Center	3	3	100.0%	0	0.0%
Maryland Youth Residence Center	4	4	100.0%	0	0.0%
Noyse Children's Center	7	7	100.0%	0	0.0%
Schaffer House	3	3	100.0%	0	0.0%
Thomas JS Waxter Children's Ctr.	5	0	0.0%	5	100.0%
Thomas O'Farrell	25	25	100.0%	0	0.0%
Western Maryland Children's Detention Ctr.	3	3	100.0%	0	0.0%
Adult Corrections	115	114	99.1%	1	0.9%
Charles H. Hickey School	48	48	100.0%	0	0.0%
Maryland School for the Blind	180	100	55.6%	80	44.4%
Maryland School for the Deaf	428	234	54.7%	194	45.3%
<b>Total Public Agencies</b>	<b>890</b>	<b>609</b>	<b>68.4%</b>	<b>281</b>	<b>31.6%</b>

\*This Table includes Eligibility 1 and 2 students

Table 9  
 Students with Disabilities by Race  
 October 29, 2004  
 Ages 3-21

	Grand Total	American Indian/ Alaskan Native		Asian/ Pacific Islander		African American		White		Hispanic	
		Total	Percent	Total	Percent	Total	Percent	Total	Percent	Total	Percent
Total State	112,388	440	0.4%	2,395	2.1%	45,420	40.4%	57,436	51.1%	6,697	6.0%
Allegany	1,550	2	0.1%	1	0.1%	81	5.2%	1,463	94.4%	3	0.2%
Anne Arundel	10,028	41	0.4%	132	1.3%	2,438	24.3%	7,128	71.1%	289	2.9%
Baltimore City	14,904	46	0.3%	53	0.4%	12,895	86.5%	1,769	11.9%	141	0.9%
Edison Schools Baltimore	160	0	0.0%	0	0.0%	159	99.4%	1	0.6%	0	0.0%
Baltimore	14,035	71	0.5%	232	1.7%	5,438	38.7%	8,027	57.2%	267	1.9%
Calvert	2,336	6	0.3%	15	0.6%	534	22.9%	1,748	74.8%	33	1.4%
Caroline	705	2	0.3%	0	0.0%	174	24.7%	515	73.0%	14	2.0%
Carroll	3,695	9	0.2%	36	1.0%	174	4.7%	3,418	92.5%	58	1.6%
Cecil	2,510	4	0.2%	8	0.3%	204	8.1%	2,253	89.8%	41	1.6%
Charles	2,426	25	1.0%	38	1.6%	1,109	45.7%	1,207	49.8%	47	1.9%
Dorchester	541	1	0.2%	1	0.2%	260	48.1%	271	50.1%	8	1.5%
Frederick	4,895	16	0.3%	67	1.4%	640	13.1%	3,958	80.9%	214	4.4%
Garrett	690	0	0.0%	0	0.0%	1	0.1%	688	99.7%	1	0.1%
Harford	6,064	32	0.5%	78	1.3%	1,059	17.5%	4,773	78.7%	122	2.0%
Howard	4,993	15	0.3%	280	5.6%	1,242	24.9%	3,278	65.7%	178	3.6%
Kent	359	2	0.6%	0	0.0%	126	35.1%	224	62.4%	7	1.9%
Montgomery	17,628	57	0.3%	1,120	6.4%	4,861	27.6%	7,999	45.4%	3,591	20.4%
Prince George's	14,828	77	0.5%	256	1.7%	11,476	77.4%	1,538	10.4%	1,481	10.0%
Queen Anne's	1,018	1	0.1%	8	0.8%	143	14.0%	853	83.8%	13	1.3%
St. Mary's	2,245	18	0.8%	19	0.8%	535	23.8%	1,631	72.7%	42	1.9%
Somerset	368	1	0.3%	2	0.5%	152	41.3%	206	56.0%	7	1.9%
Talbot	470	3	0.6%	2	0.4%	136	28.9%	305	64.9%	24	5.1%
Washington	2,664	8	0.3%	16	0.6%	269	10.1%	2,320	87.1%	51	1.9%
Wicomico	1,666	0	0.0%	13	0.8%	697	41.8%	927	55.6%	29	1.7%
Worcester	720	3	0.4%	2	0.3%	231	32.1%	470	65.3%	14	1.9%
<b>Total Local Education Agencies</b>	<b>111,498</b>	<b>440</b>	<b>0.4%</b>	<b>2,379</b>	<b>2.1%</b>	<b>45,034</b>	<b>40.4%</b>	<b>56,970</b>	<b>51.1%</b>	<b>6,675</b>	<b>6.0%</b>
Department of Juvenile Services	119	0	0.0%	3	2.5%	81	68.1%	30	25.2%	5	4.2%
Baltimore City Juvenile Justice Center	16	0	0.0%	0	0.0%	16	100.0%	0	0.0%	0	0.0%
Carter Center	9	0	0.0%	1	11.1%	3	33.3%	5	55.6%	0	0.0%
Cheltenham Detention Center	13	0	0.0%	0	0.0%	9	69.2%	2	15.4%	2	15.4%
Cumberland Youth Services Ctr.	31	0	0.0%	1	3.2%	18	58.1%	12	38.7%	0	0.0%
Lower Eastern Shore Children's Center	3	0	0.0%	0	0.0%	2	66.7%	0	0.0%	1	33.3%
Maryland Youth Residence Center	4	0	0.0%	0	0.0%	3	75.0%	1	25.0%	0	0.0%
Noyse Children's Center	7	0	0.0%	0	0.0%	7	100.0%	0	0.0%	0	0.0%
Schaffer House	3	0	0.0%	0	0.0%	0	0.0%	3	100.0%	0	0.0%
Thomas JS Waxter Children's Ctr.	5	0	0.0%	0	0.0%	3	60.0%	2	40.0%	0	0.0%
Thomas O'Farrell	25	0	0.0%	1	4.0%	18	72.0%	4	16.0%	2	8.0%
Western Maryland Children's Detention Ctr.	3	0	0.0%	0	0.0%	2	66.7%	1	33.3%	0	0.0%
Adult Corrections	115	0	0.0%	1	0.9%	104	90.4%	10	8.7%	0	0.0%
Charles H. Hickey School	48	0	0.0%	0	0.0%	32	66.7%	16	33.3%	0	0.0%
Maryland School for the Blind	180	0	0.0%	4	2.2%	73	40.6%	98	54.4%	5	2.8%
Maryland School for the Deaf	428	0	0.0%	8	1.9%	96	22.4%	312	72.9%	12	2.8%
<b>Total Public Agencies</b>	<b>890</b>	<b>0</b>	<b>0.0%</b>	<b>16</b>	<b>1.8%</b>	<b>386</b>	<b>43.4%</b>	<b>466</b>	<b>52.4%</b>	<b>22</b>	<b>2.5%</b>

\*This Table includes Eligibility 1 and 2 students

Table10  
 Students with Disabilities by Race  
 Compared with General Education Students by Race  
 Ages 3-21  
 October 29, 2004

	Grand Total	American Indian/ Alaskan Native		Asian/ Pacific Islander		African American		White		Hispanic	
		Total	Percent	Total	Percent	Total	Percent	Total	Percent	Total	Percent
Total SWD	111,498	440	0.4%	2,379	2.1%	45,034	40.4%	56,970	51.1%	6,675	6.0%
Total General Education	865,561	3,489	0.4%	43,590	5.0%	329,801	38.1%	428,303	49.5%	60,378	7.0%
Allegany SWD	1,550	2	0.1%	1	0.1%	81	5.2%	1,463	94.4%	3	0.2%
General Education	9,840	32	0.3%	64	0.7%	442	4.5%	9,257	94.1%	45	0.5%
Anne Arundel SWD	10,028	41	0.4%	132	1.3%	2,438	24.3%	7,128	71.1%	289	2.9%
General Education	73,991	309	0.4%	2,351	3.2%	15,806	21.4%	52,588	71.1%	2,937	4.0%
Baltimore City SWD	14,904	46	0.3%	53	0.4%	12,895	86.5%	1,769	11.9%	141	0.9%
General Education	88,401	245	0.3%	553	0.6%	78,458	88.8%	7,708	8.7%	1,437	1.6%
Edison Schools SWD	160	0	0.0%	0	0.0%	159	99.4%	1	0.6%	0	0.0%
General Education	2,276	0	0.0%	0	0.0%	2,267	99.6%	3	0.1%	6	0.3%
Baltimore SWD	14,035	71	0.5%	232	1.7%	5,438	38.7%	8,027	57.2%	267	1.9%
General Education	107,701	573	0.5%	4,849	4.5%	40,997	38.1%	58,210	54.0%	3,072	2.9%
Calvert SWD	2,336	6	0.3%	15	0.6%	534	22.8%	1,748	74.8%	33	1.4%
General Education	17,451	47	0.3%	214	1.2%	2,715	15.6%	14,233	81.6%	242	1.4%
Caroline SWD	705	2	0.3%	0	0.0%	174	24.7%	515	73.0%	14	2.0%
General Education	5,412	20	0.4%	53	1.0%	1,026	19.0%	4,118	76.1%	195	3.6%
Carroll SWD	3,695	9	0.2%	36	1.0%	174	4.7%	3,418	92.5%	58	1.6%
General Education	28,792	82	0.3%	396	1.4%	865	3.0%	26,969	93.7%	480	1.7%
Cecil SWD	2,510	4	0.2%	8	0.3%	204	8.1%	2,253	89.8%	41	1.6%
General Education	16,535	49	0.3%	155	0.9%	1,391	8.4%	14,549	88.0%	391	2.4%
Charles SWD	2,426	25	1.0%	38	1.6%	1,109	45.7%	1,207	49.8%	47	1.9%
General Education	26,026	229	0.9%	760	2.9%	11,271	43.3%	13,025	50.0%	741	2.8%
Dorchester SWD	541	1	0.2%	1	0.2%	260	48.1%	271	50.1%	8	1.5%
General Education	4,788	15	0.3%	65	1.4%	1,970	41.1%	2,630	54.9%	108	2.3%
Frederick SWD	4,895	16	0.3%	67	1.4%	640	13.1%	3,958	80.9%	214	4.4%
General Education	39,489	130	0.3%	1,352	3.4%	4,051	10.3%	31,927	80.9%	2,029	5.1%
Garrett SWD	690	0	0.0%	0	0.0%	1	0.1%	688	99.7%	1	0.1%
General Education	4,737	0	0.0%	7	0.1%	11	0.2%	4,708	99.4%	11	0.2%

\*General education number includes students with disabilities.

\*\*This Table includes Eligibility 1 and 2 students

Table 10 continued  
 Students with Disabilities by Race  
 Compared with General Education Students by Race  
 Ages 3-21  
 October 29, 2004

	Grand Total	American Indian/ Alaskan Native		Asian/ Pacific Islander		African American		White		Hispanic	
		Total	Percent	Total	Percent	Total	Percent	Total	Percent	Total	Percent
Harford SWD	6,064	32	0.5%	78	1.3%	1,059	17.5%	4,773	78.7%	122	2.0%
General Education	40,294	216	0.5%	970	2.4%	7,008	17.4%	30,962	76.8%	1,138	2.8%
Howard SWD	4,993	15	0.3%	280	5.6%	1,242	24.9%	3,278	65.7%	178	3.6%
General Education	48,219	121	0.3%	6,177	12.8%	9,416	19.5%	30,579	63.4%	1,926	4.0%
Kent SWD	359	2	0.6%	0	0.0%	126	35.1%	224	62.4%	7	1.9%
General Education	2,514	7	0.3%	15	0.6%	663	26.4%	1,735	69.0%	94	3.7%
Montgomery SWD	17,628	57	0.3%	1,120	6.4%	4,861	27.6%	7,999	45.4%	3,591	20.4%
General Education	139,393	397	0.3%	20,124	14.4%	31,455	22.6%	60,376	43.3%	27,041	19.4%
Prince George's SWD	14,828	77	0.5%	256	1.7%	11,476	77.4%	1,538	10.4%	1,481	10.0%
General Education	136,095	782	0.6%	4,099	3.0%	104,912	77.1%	9,658	7.1%	16,644	12.2%
Queen Anne's SWD	1,018	1	0.1%	8	0.8%	143	14.0%	853	83.8%	13	1.3%
General Education	7,713	33	0.4%	79	1.0%	701	9.1%	6,801	88.2%	99	1.3%
St. Mary's SWD	2,245	18	0.8%	19	0.8%	535	23.8%	1,631	72.7%	42	1.9%
General Education	16,567	104	0.6%	386	2.3%	3,137	18.9%	12,567	75.9%	373	2.3%
Somerset SWD	368	1	0.3%	2	0.5%	152	41.3%	206	56.0%	7	1.9%
General Education	2,952	2	0.1%	35	1.2%	1,357	46.0%	1,455	49.3%	103	3.5%
Talbot SWD	470	3	0.6%	2	0.4%	136	28.9%	305	64.9%	24	5.1%
General Education	4,505	12	0.3%	86	1.9%	959	21.3%	3,275	72.7%	173	3.8%
Washington SWD	2,664	8	0.3%	16	0.6%	269	10.1%	2,320	87.1%	51	1.9%
General Education	20,807	42	0.2%	281	1.4%	2,111	10.1%	17,883	85.9%	490	2.4%
Wicomico SWD	1,666	0	0.0%	13	0.8%	697	41.8%	927	55.6%	29	1.7%
General Education	14,387	14	0.1%	457	3.2%	5,151	35.8%	8,334	57.9%	431	3.0%
Worcester SWD	720	3	0.4%	2	0.3%	231	32.1%	470	65.3%	14	1.9%
General Education	6,676	28	0.4%	62	0.9%	1,661	24.9%	4,753	71.2%	172	2.6%

\*General education number includes students with disabilities.

\*\*This Table includes Eligibility 1 and 2 students

Table 11  
 Students with Disabilities by Race and Disability  
 Ages 3-21  
 October 29, 2004

Race	Grand Total	Mental Retardation		Hearing Impaired		Deaf		Speech/ Language		Visually Impaired		Emotion-ally Disturbed		Orthope-dically Impaired	
		Total	Percent	Total	Percent	Total	Percent	Total	Percent	Total	Percent	Total	Percent	Total	Percent
Total State	112,388	6,454	5.74%	632	0.56%	702	0.62%	28,489	25.35%	534	0.48%	9,775	8.70%	528	0.47%
American Indian	440	13	0.20%	3	0.47%	1	0.14%	120	0.42%	1	0.19%	45	0.46%	3	0.57%
Asian	2,395	128	1.98%	31	4.91%	31	4.42%	921	3.23%	23	4.31%	60	0.61%	15	2.84%
African American	45,420	3,842	59.53%	230	36.39%	173	24.64%	9,138	32.08%	214	40.07%	5,238	53.59%	233	44.13%
White	57,436	2,230	34.55%	330	52.22%	451	64.25%	16,224	56.95%	272	50.94%	4,167	42.63%	242	45.83%
Hispanic	6,697	241	3.73%	38	6.01%	46	6.55%	2,086	7.32%	24	4.49%	265	2.71%	35	6.63%

Table 11 (continued)  
 Students with Disabilities by Race and Disability  
 Ages 3-21  
 October 29, 2004

Race	Health Impaired		Learning Disabilities		Multiple Disabilities		Deaf/ Blind		Autism		Traumatic Brain Injury		Develop-mental Delay	
	Total	Percent	Total	Percent	Total	Percent	Total	Percent	Total	Percent	Total	Percent	Total	Percent
Total State	12,166	10.82%	38,580	34.33%	5,278	4.70%	27	0.02%	4,659	4.15%	334	0.30%	4,230	3.76%
American Indian	44	0.36%	149	0.39%	24	0.45%	0	0.00%	13	0.28%	3	0.90%	21	0.50%
Asian	163	1.34%	463	1.20%	139	2.63%	0	0.00%	241	5.17%	11	3.29%	169	4.00%
African American	4,690	38.55%	15,924	41.28%	2,194	41.57%	5	18.52%	1,554	33.35%	152	45.51%	1,833	43.33%
White	6,888	56.62%	19,254	49.91%	2,669	50.57%	20	74.07%	2,656	57.01%	154	46.11%	1,879	44.42%
Hispanic	381	3.13%	2,790	7.23%	252	4.77%	2	7.41%	195	4.19%	14	4.19%	328	7.75%

\*This Table includes Eligibility 1 and 2 students

Table 12  
 Preschool Students with Disabilities by Least Restrictive Environment  
 Ages 3-5  
 October 29, 2004

	Total 3-5 Yr Olds	Home		Itinerant		Reverse Mainstream		Early Childhood		Early Childhood Special Ed		Combined		Hospital Total Percent	Day				Residential				
		Total	Percent	Total	Percent	Total	Percent	Total	Percent	Total	Percent	Total	Percent		Public		Private		Public		Private		
															Total	Percent	Total	Percent	Total	Percent	Total	Percent	Total
Total State	12,227	119	0.97%	3,858	31.55%	140	1.15%	2,402	19.65%	2,868	23.46%	2,436	19.92%	3	0.02%	269	2.20%	129	1.06%	1	0.01%	2	0.02%
Allegany	151	7	4.64%	75	49.67%	0	0.00%	25	16.56%	0	0.00%	44	29.14%	0	0.00%	0	0.00%	0	0.00%	0	0.00%	0	0.00%
Anne Arundel	1,214	9	0.74%	501	41.27%	18	1.48%	168	13.84%	383	31.55%	30	2.47%	0	0.00%	103	8.48%	2	0.16%	0	0.00%	0	0.00%
Baltimore City	1,271	48	3.78%	442	34.78%	32	2.52%	395	31.08%	291	22.90%	9	0.71%	0	0.00%	28	2.20%	26	2.05%	0	0.00%	0	0.00%
Edison Schools	18	0	0.00%	9	50.00%	0	0.00%	9	50.00%	0	0.00%	0	0.00%	0	0.00%	0	0.00%	0	0.00%	0	0.00%	0	0.00%
Baltimore	1,804	0	0.00%	175	9.70%	0	0.00%	112	6.21%	434	24.06%	1,039	57.59%	0	0.00%	41	2.27%	3	0.17%	0	0.00%	0	0.00%
Calvert	259	3	1.16%	104	40.15%	0	0.00%	12	4.63%	81	31.27%	51	19.69%	2	0.77%	6	2.32%	0	0.00%	0	0.00%	0	0.00%
Caroline	75	0	0.00%	21	28.00%	0	0.00%	22	29.33%	26	34.67%	6	8.00%	0	0.00%	0	0.00%	0	0.00%	0	0.00%	0	0.00%
Carroll	392	3	0.77%	169	43.11%	0	0.00%	94	23.98%	104	26.53%	18	4.59%	0	0.00%	2	0.51%	2	0.51%	0	0.00%	0	0.00%
Cecil	286	0	0.00%	47	16.43%	4	1.40%	5	1.75%	71	24.83%	159	55.59%	0	0.00%	0	0.00%	0	0.00%	0	0.00%	0	0.00%
Charles	321	1	0.31%	173	53.89%	5	1.56%	137	42.68%	4	1.25%	1	0.31%	0	0.00%	0	0.00%	0	0.00%	0	0.00%	0	0.00%
Dorchester	54	1	1.85%	8	14.81%	0	0.00%	26	48.15%	7	12.96%	12	22.22%	0	0.00%	0	0.00%	0	0.00%	0	0.00%	0	0.00%
Frederick	487	0	0.00%	247	50.72%	0	0.00%	128	26.28%	93	19.10%	9	1.85%	0	0.00%	10	2.05%	0	0.00%	0	0.00%	0	0.00%
Garrett	64	0	0.00%	7	10.94%	0	0.00%	57	89.06%	0	0.00%	0	0.00%	0	0.00%	0	0.00%	0	0.00%	0	0.00%	0	0.00%
Harford	694	23	3.31%	224	32.28%	1	0.14%	262	37.75%	137	19.74%	42	6.05%	0	0.00%	3	0.43%	2	0.29%	0	0.00%	0	0.00%
Howard	700	5	0.71%	192	27.43%	68	9.71%	140	20.00%	86	12.29%	192	27.43%	0	0.00%	7	1.00%	10	1.43%	0	0.00%	0	0.00%
Kent	40	6	15.00%	0	0.00%	0	0.00%	34	85.00%	0	0.00%	0	0.00%	0	0.00%	0	0.00%	0	0.00%	0	0.00%	0	0.00%
Montgomery	1,913	3	0.16%	982	51.33%	0	0.00%	77	4.03%	717	37.48%	44	2.30%	0	0.00%	13	0.68%	77	4.03%	0	0.00%	0	0.00%
Prince George's	1,512	3	0.20%	194	12.83%	0	0.00%	304	20.11%	363	24.01%	626	41.40%	1	0.07%	19	1.26%	1	0.07%	1	0.07%	0	0.00%
Queen Anne's	118	0	0.00%	31	26.27%	0	0.00%	76	64.41%	10	8.47%	0	0.00%	0	0.00%	0	0.00%	1	0.85%	0	0.00%	0	0.00%
St. Mary's	249	0	0.00%	65	26.10%	12	4.82%	72	28.92%	41	16.47%	57	22.89%	0	0.00%	0	0.00%	1	0.40%	0	0.00%	1	0.40%
Somerset	34	0	0.00%	3	8.82%	0	0.00%	13	38.24%	1	2.94%	17	50.00%	0	0.00%	0	0.00%	0	0.00%	0	0.00%	0	0.00%
Talbot	68	0	0.00%	0	0.00%	0	0.00%	68	100.00%	0	0.00%	0	0.00%	0	0.00%	0	0.00%	0	0.00%	0	0.00%	0	0.00%
Washington	226	5	2.21%	62	27.43%	0	0.00%	133	58.85%	2	0.88%	21	9.29%	0	0.00%	3	1.33%	0	0.00%	0	0.00%	0	0.00%
Wicomico	160	2	1.25%	89	55.63%	0	0.00%	28	17.50%	5	3.13%	36	22.50%	0	0.00%	0	0.00%	0	0.00%	0	0.00%	0	0.00%
Worcester	69	0	0.00%	38	55.07%	0	0.00%	5	7.25%	3	4.35%	23	33.33%	0	0.00%	0	0.00%	0	0.00%	0	0.00%	0	0.00%
Total Local Education Agencies	12,179	119	0.98%	3,858	31.68%	140	1.15%	2,402	19.72%	2,859	23.47%	2,436	20.00%	3	0.02%	235	1.93%	125	1.03%	1	0.01%	1	0.01%
Maryland School for the Blind	14	0	0.00%	0	0.00%	0	0.00%	0	0.00%	9	64.29%	0	0.00%	0	0.00%	0	0.00%	4	28.57%	0	0.00%	1	7.14%
Maryland School for the Deaf	34	0	0.00%	0	0.00%	0	0.00%	0	0.00%	0	0.00%	0	0.00%	0	0.00%	34	100.00%	0	0.00%	0	0.00%	0	0.00%
Total Public Agencies	48	0	0.00%	0	0.00%	0	0.00%	0	0.00%	9	18.75%	0	0.00%	0	0.00%	34	70.83%	4	8.33%	0	0.00%	1	2.08%

\*Percentages calculated on total number of 3-5 year olds.

\*\*This Table includes Eligibility 1 and 2 students

Figure 2  
Preschool Students with Disabilities by LRE  
Age 3-5  
October 29, 2004

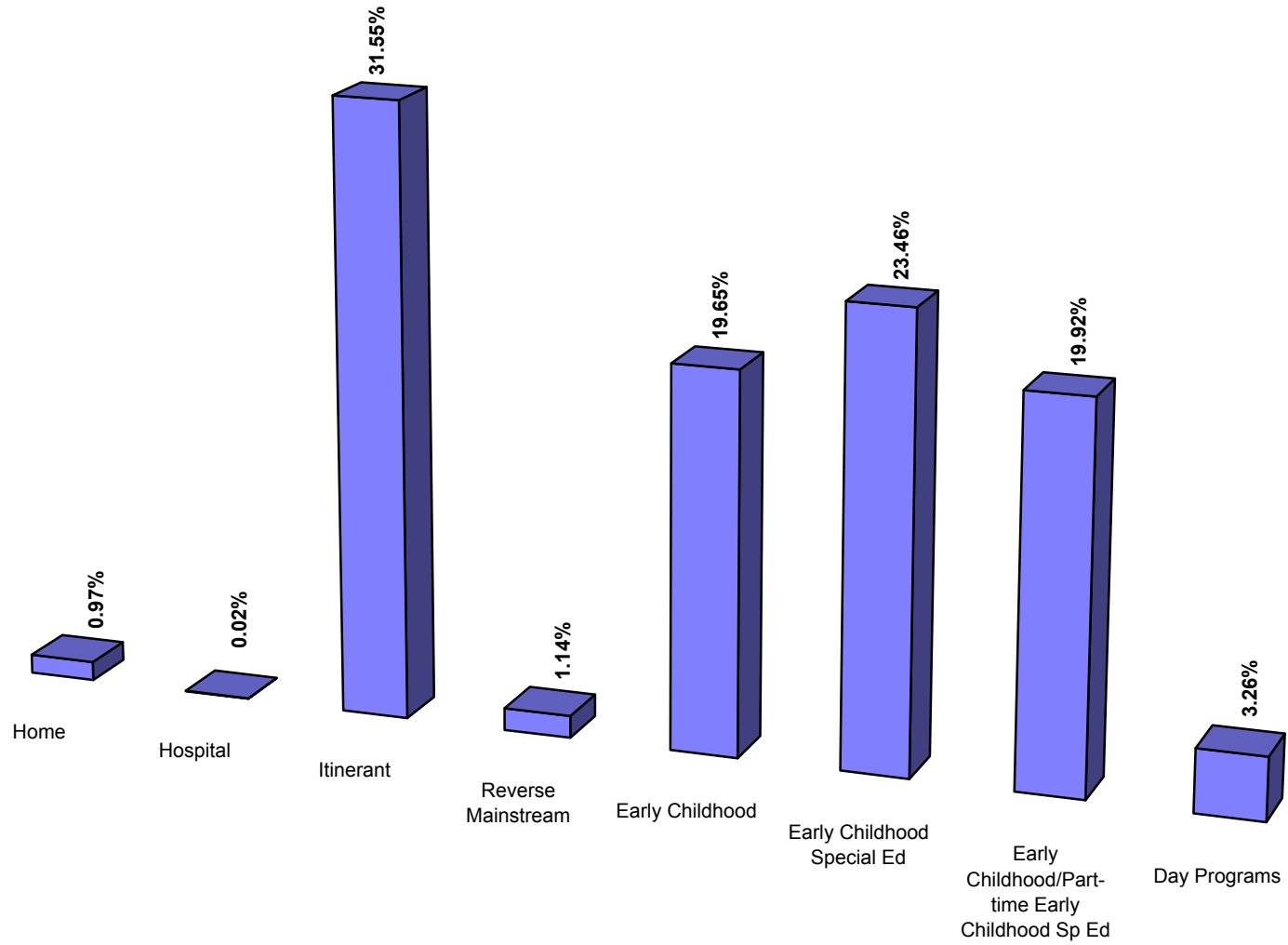




Table 13  
 Preschool Students with Disabilities by Least Restrictive Environment  
 Age 3  
 October 29, 2004

	Total 3 Yr Olds	Home		Itinerant		Reverse Mainstream		Early Childhood		Early Childhood Special Ed		Combined		Hospital		Day				Residential			
		Total	Percent	Total	Percent	Total	Percent	Total	Percent	Total	Percent	Total	Percent	Total	Percent	Total	Percent	Total	Percent	Total	Percent	Total	Percent
Total State	2,947	52	1.76%	1,157	39.26%	64	2.17%	187	6.35%	796	27.01%	586	19.88%	0	0.00%	58	1.97%	47	1.59%	0	0.00%	0	0.00%
Allegany	35	4	11.43%	14	40.00%	0	0.00%	8	22.86%	0	0.00%	9	25.71%	0	0.00%	0	0.00%	0	0.00%	0	0.00%	0	0.00%
Anne Arundel	370	5	1.35%	191	51.62%	0	0.00%	24	6.49%	117	31.62%	6	1.62%	0	0.00%	26	7.03%	1	0.27%	0	0.00%	0	0.00%
Baltimore City	237	22	9.28%	123	51.90%	13	5.49%	11	4.64%	52	21.94%	3	1.27%	0	0.00%	10	4.22%	3	1.27%	0	0.00%	0	0.00%
Edison Schools	0	0	0.00%	0	0.00%	0	0.00%	0	0.00%	0	0.00%	0	0.00%	0	0.00%	0	0.00%	0	0.00%	0	0.00%	0	0.00%
Baltimore	404	0	0.00%	59	14.60%	0	0.00%	8	1.98%	161	39.85%	169	41.83%	0	0.00%	7	1.73%	0	0.00%	0	0.00%	0	0.00%
Calvert	54	1	1.85%	32	59.26%	0	0.00%	0	0.00%	17	31.48%	1	1.85%	0	0.00%	3	5.56%	0	0.00%	0	0.00%	0	0.00%
Caroline	18	0	0.00%	6	33.33%	0	0.00%	0	0.00%	12	66.67%	0	0.00%	0	0.00%	0	0.00%	0	0.00%	0	0.00%	0	0.00%
Carroll	99	2	2.02%	57	57.58%	0	0.00%	7	7.07%	28	28.28%	4	4.04%	0	0.00%	0	0.00%	1	1.01%	0	0.00%	0	0.00%
Cecil	50	0	0.00%	21	42.00%	2	4.00%	1	2.00%	26	52.00%	0	0.00%	0	0.00%	0	0.00%	0	0.00%	0	0.00%	0	0.00%
Charles	77	0	0.00%	31	40.26%	4	5.19%	39	50.65%	3	3.90%	0	0.00%	0	0.00%	0	0.00%	0	0.00%	0	0.00%	0	0.00%
Dorchester	13	0	0.00%	6	46.15%	0	0.00%	2	15.38%	5	38.46%	0	0.00%	0	0.00%	0	0.00%	0	0.00%	0	0.00%	0	0.00%
Frederick	125	0	0.00%	88	70.40%	0	0.00%	3	2.40%	29	23.20%	1	0.80%	0	0.00%	4	3.20%	0	0.00%	0	0.00%	0	0.00%
Garrett	11	0	0.00%	1	9.09%	0	0.00%	10	90.91%	0	0.00%	0	0.00%	0	0.00%	0	0.00%	0	0.00%	0	0.00%	0	0.00%
Harford	155	4	2.58%	77	49.68%	0	0.00%	12	7.74%	58	37.42%	3	1.94%	0	0.00%	1	0.65%	0	0.00%	0	0.00%	0	0.00%
Howard	184	3	1.63%	52	28.26%	26	14.13%	15	8.15%	17	9.24%	68	36.96%	0	0.00%	2	1.09%	1	0.54%	0	0.00%	0	0.00%
Kent	9	4	44.44%	0	0.00%	0	0.00%	5	55.56%	0	0.00%	0	0.00%	0	0.00%	0	0.00%	0	0.00%	0	0.00%	0	0.00%
Montgomery	482	2	0.41%	225	46.68%	0	0.00%	3	0.62%	213	44.19%	2	0.41%	0	0.00%	0	0.00%	37	7.68%	0	0.00%	0	0.00%
Prince George's	416	2	0.48%	77	18.51%	0	0.00%	9	2.16%	28	6.73%	300	72.12%	0	0.00%	0	0.00%	0	0.00%	0	0.00%	0	0.00%
Queen Anne's	21	0	0.00%	13	61.90%	0	0.00%	2	9.52%	6	28.57%	0	0.00%	0	0.00%	0	0.00%	0	0.00%	0	0.00%	0	0.00%
St. Mary's	52	0	0.00%	21	40.38%	3	5.77%	2	3.85%	21	40.38%	5	9.62%	0	0.00%	0	0.00%	0	0.00%	0	0.00%	0	0.00%
Somerset	9	0	0.00%	3	33.33%	0	0.00%	1	11.11%	0	0.00%	5	55.56%	0	0.00%	0	0.00%	0	0.00%	0	0.00%	0	0.00%
Talbot	16	0	0.00%	0	0.00%	16	100.00%	0	0.00%	0	0.00%	0	0.00%	0	0.00%	0	0.00%	0	0.00%	0	0.00%	0	0.00%
Washington	46	1	2.17%	18	39.13%	0	0.00%	19	41.30%	1	2.17%	7	15.22%	0	0.00%	0	0.00%	0	0.00%	0	0.00%	0	0.00%
Wicomico	42	2	4.76%	35	83.33%	0	0.00%	5	11.90%	0	0.00%	0	0.00%	0	0.00%	0	0.00%	0	0.00%	0	0.00%	0	0.00%
Worcester	13	0	0.00%	7	53.85%	0	0.00%	1	7.69%	2	15.38%	3	23.08%	0	0.00%	0	0.00%	0	0.00%	0	0.00%	0	0.00%
Total Local Education Agencies	2,938	52	1.77%	1,157	39.38%	64	2.18%	187	6.36%	796	27.09%	586	19.95%	0	0.00%	53	1.80%	43	1.46%	0	0.00%	0	0.00%
Maryland School for the Blind	4	0	0.00%	0	0.00%	0	0.00%	0	0.00%	0	0.00%	0	0.00%	0	0.00%	0	0.00%	4	100.00%	0	0.00%	0	0.00%
Maryland School for the Deaf	5	0	0.00%	0	0.00%	0	0.00%	0	0.00%	0	0.00%	0	0.00%	0	0.00%	5	100.00%	0	0.00%	0	0.00%	0	0.00%
Total Public Agencies	9	0	0.00%	0	0.00%	0	0.00%	0	0.00%	0	0.00%	0	0.00%	0	0.00%	5	55.56%	4	44.44%	0	0.00%	0	0.00%

\*This Table includes Eligibility 1 and 2 students

Table 14  
 Preschool Students with Disabilities by Least Restrictive Environment  
 Age 4  
 October 29, 2004

	Total 4 Yr Olds	Home		Itinerant		Reverse Mainstream		Early Childhood		Early Childhood Special Ed		Combined		Hospital		Day				Residential			
		Total	Percent	Total	Percent	Total	Percent	Total	Percent	Total	Percent	Total	Percent	Total	Percent	Total	Percent	Total	Percent	Total	Percent	Total	Percent
Total State	4,183	45	1.08%	1,514	36.19%	54	1.29%	585	13.99%	1,014	24.24%	823	19.67%	0	0.00%	97	2.32%	51	1.22%	0	0.00%	0	0.00%
Allegany	53	3	5.66%	31	58.49%	0	0.00%	10	18.87%	0	0.00%	9	16.98%	0	0.00%	0	0.00%	0	0.00%	0	0.00%	0	0.00%
Anne Arundel	416	2	0.48%	192	46.15%	5	1.20%	21	5.05%	143	34.38%	9	2.16%	0	0.00%	44	10.58%	0	0.00%	0	0.00%	0	0.00%
Baltimore City	476	21	4.41%	230	48.32%	14	2.94%	88	18.49%	101	21.22%	5	1.05%	0	0.00%	10	2.10%	7	1.47%	0	0.00%	0	0.00%
Edison Schools	8	0	0.00%	5	0.00%	0	0.00%	3	0.00%	0	0.00%	0	0.00%	0	0.00%	0	0.00%	0	0.00%	0	0.00%	0	0.00%
Baltimore	597	0	0.00%	69	11.56%	0	0.00%	34	5.70%	156	26.13%	319	53.43%	0	0.00%	18	3.02%	1	0.17%	0	0.00%	0	0.00%
Calvert	95	1	1.05%	54	56.84%	0	0.00%	3	3.16%	29	30.53%	6	6.32%	0	0.00%	2	2.11%	0	0.00%	0	0.00%	0	0.00%
Caroline	20	0	0.00%	9	45.00%	0	0.00%	2	10.00%	7	35.00%	2	10.00%	0	0.00%	0	0.00%	0	0.00%	0	0.00%	0	0.00%
Carroll	135	0	0.00%	69	51.11%	0	0.00%	19	14.07%	41	30.37%	4	2.96%	0	0.00%	1	0.74%	1	0.74%	0	0.00%	0	0.00%
Cecil	79	0	0.00%	16	20.25%	2	2.53%	0	0.00%	26	32.91%	35	44.30%	0	0.00%	0	0.00%	0	0.00%	0	0.00%	0	0.00%
Charles	104	1	0.96%	50	48.08%	0	0.00%	51	49.04%	1	0.96%	1	0.96%	0	0.00%	0	0.00%	0	0.00%	0	0.00%	0	0.00%
Dorchester	18	1	5.56%	1	5.56%	0	0.00%	10	55.56%	2	11.11%	4	22.22%	0	0.00%	0	0.00%	0	0.00%	0	0.00%	0	0.00%
Frederick	159	0	0.00%	95	59.75%	0	0.00%	10	6.29%	48	30.19%	3	1.89%	0	0.00%	3	1.89%	0	0.00%	0	0.00%	0	0.00%
Garrett	17	0	0.00%	3	17.65%	0	0.00%	14	82.35%	0	0.00%	0	0.00%	0	0.00%	0	0.00%	0	0.00%	0	0.00%	0	0.00%
Harford	257	8	3.11%	100	38.91%	0	0.00%	81	31.52%	54	21.01%	12	4.67%	0	0.00%	2	0.78%	0	0.00%	0	0.00%	0	0.00%
Howard	235	1	0.43%	69	29.36%	30	12.77%	26	11.06%	41	17.45%	62	26.38%	0	0.00%	3	1.28%	3	1.28%	0	0.00%	0	0.00%
Kent	11	2	18.18%	0	0.00%	0	0.00%	9	81.82%	0	0.00%	0	0.00%	0	0.00%	0	0.00%	0	0.00%	0	0.00%	0	0.00%
Montgomery	678	0	0.00%	313	46.17%	0	0.00%	34	5.01%	272	40.12%	20	2.95%	0	0.00%	0	0.00%	39	5.75%	0	0.00%	0	0.00%
Prince George's	515	1	0.19%	106	20.58%	0	0.00%	59	11.46%	66	12.82%	282	54.76%	0	0.00%	1	0.19%	0	0.00%	0	0.00%	0	0.00%
Queen Anne's	37	0	0.00%	14	37.84%	0	0.00%	20	54.05%	3	8.11%	0	0.00%	0	0.00%	0	0.00%	0	0.00%	0	0.00%	0	0.00%
St. Mary's	82	0	0.00%	28	34.15%	3	3.66%	14	17.07%	14	17.07%	23	28.05%	0	0.00%	0	0.00%	0	0.00%	0	0.00%	0	0.00%
Somerset	9	0	0.00%	0	0.00%	0	0.00%	5	55.56%	0	0.00%	4	44.44%	0	0.00%	0	0.00%	0	0.00%	0	0.00%	0	0.00%
Talbot	28	0	0.00%	0	0.00%	0	0.00%	28	100.00%	0	0.00%	0	0.00%	0	0.00%	0	0.00%	0	0.00%	0	0.00%	0	0.00%
Washington	76	4	5.26%	27	35.53%	0	0.00%	35	46.05%	1	1.32%	8	10.53%	0	0.00%	1	1.32%	0	0.00%	0	0.00%	0	0.00%
Wicomico	42	0	0.00%	23	54.76%	0	0.00%	9	21.43%	2	4.76%	8	19.05%	0	0.00%	0	0.00%	0	0.00%	0	0.00%	0	0.00%
Worcester	18	0	0.00%	10	55.56%	0	0.00%	0	0.00%	1	5.56%	7	38.89%	0	0.00%	0	0.00%	0	0.00%	0	0.00%	0	0.00%
Total Local Education Agencies	4,165	45	1.08%	1,514	36.35%	54	1.30%	585	14.05%	1,008	24.20%	823	19.76%	0	0.00%	85	2.04%	51	1.22%	0	0.00%	0	0.00%
Maryland School for the Blind	6	0	0.00%	0	0.00%	0	0.00%	0	0.00%	6	100.00%	0	0.00%	0	0.00%	0	0.00%	0	0.00%	0	0.00%	0	0.00%
Maryland School for the Deaf	12	0	0.00%	0	0.00%	0	0.00%	0	0.00%	0	0.00%	0	0.00%	0	0.00%	12	100.00%	0	0.00%	0	0.00%	0	0.00%
Total Public Agencies	18	0	0.00%	0	0.00%	0	0.00%	0	0.00%	6	33.33%	0	0.00%	0	0.00%	12	66.67%	0	0.00%	0	0.00%	0	0.00%

\*This Table includes Eligibility 1 and 2 students

Table 15  
 Preschool Students with Disabilities by Least Restrictive Environment  
 Age 5  
 October 29, 2004

	Total 5 Yr Olds	Home		Itinerant		Reverse Mainstream		Early Childhood		Early Childhood Special Ed		Combined		Hospital		Day				Residential			
		Total	Percent	Total	Percent	Total	Percent	Total	Percent	Total	Percent	Total	Percent	Total	Percent	Total	Percent	Total	Percent	Total	Percent	Total	Percent
Total State	5,097	22	0.43%	1,187	23.29%	38	0.75%	1,613	31.65%	1,059	20.78%	1,027	20.15%	3	0.06%	114	2.24%	31	0.61%	1	0.02%	2	0.04%
Allegany	63	0	0.00%	30	47.62%	0	0.00%	7	11.11%	0	0.00%	26	41.27%	0	0.00%	0	0.00%	0	0.00%	0	0.00%	0	0.00%
Anne Arundel	428	2	0.47%	118	27.57%	13	3.04%	123	28.74%	123	28.74%	15	3.50%	0	0.00%	33	7.71%	1	0.23%	0	0.00%	0	0.00%
Baltimore City	558	5	0.90%	89	15.95%	5	0.90%	296	53.05%	138	24.73%	1	0.18%	0	0.00%	8	1.43%	16	2.87%	0	0.00%	0	0.00%
Edison Schools	10	0	0.00%	4	0.00%	0	0.00%	6	0.00%	0	0.00%	0	0.00%	0	0.00%	0	0.00%	0	0.00%	0	0.00%	0	0.00%
Baltimore	803	0	0.00%	47	5.85%	0	0.00%	70	8.72%	117	14.57%	551	68.62%	0	0.00%	16	1.99%	2	0.25%	0	0.00%	0	0.00%
Calvert	110	1	0.91%	18	16.36%	0	0.00%	8	7.27%	36	32.73%	44	40.00%	2	1.82%	1	0.91%	0	0.00%	0	0.00%	0	0.00%
Caroline	37	0	0.00%	6	16.22%	0	0.00%	20	54.05%	7	18.92%	4	10.81%	0	0.00%	0	0.00%	0	0.00%	0	0.00%	0	0.00%
Carroll	158	1	0.63%	43	27.22%	0	0.00%	68	43.04%	35	22.15%	10	6.33%	0	0.00%	1	0.63%	0	0.00%	0	0.00%	0	0.00%
Cecil	157	0	0.00%	10	6.37%	0	0.00%	4	2.55%	19	12.10%	124	78.98%	0	0.00%	0	0.00%	0	0.00%	0	0.00%	0	0.00%
Charles	140	0	0.00%	92	65.71%	1	0.71%	47	33.57%	0	0.00%	0	0.00%	0	0.00%	0	0.00%	0	0.00%	0	0.00%	0	0.00%
Dorchester	23	0	0.00%	1	4.35%	0	0.00%	14	60.87%	0	0.00%	8	34.78%	0	0.00%	0	0.00%	0	0.00%	0	0.00%	0	0.00%
Frederick	203	0	0.00%	64	31.53%	0	0.00%	115	56.65%	16	7.88%	5	2.46%	0	0.00%	3	1.48%	0	0.00%	0	0.00%	0	0.00%
Garrett	36	0	0.00%	3	8.33%	0	0.00%	33	91.67%	0	0.00%	0	0.00%	0	0.00%	0	0.00%	0	0.00%	0	0.00%	0	0.00%
Harford	282	11	3.90%	47	16.67%	1	0.35%	169	59.93%	25	8.87%	27	9.57%	0	0.00%	0	0.00%	2	0.71%	0	0.00%	0	0.00%
Howard	281	1	0.36%	71	25.27%	12	4.27%	99	35.23%	28	9.96%	62	22.06%	0	0.00%	2	0.71%	6	2.14%	0	0.00%	0	0.00%
Kent	20	0	0.00%	0	0.00%	0	0.00%	20	100.00%	0	0.00%	0	0.00%	0	0.00%	0	0.00%	0	0.00%	0	0.00%	0	0.00%
Montgomery	753	1	0.13%	444	58.96%	0	0.00%	40	5.31%	232	30.81%	22	2.92%	0	0.00%	13	1.73%	1	0.13%	0	0.00%	0	0.00%
Prince George's	581	0	0.00%	11	1.89%	0	0.00%	236	40.62%	269	46.30%	44	7.57%	1	0.17%	18	3.10%	1	0.17%	1	0.17%	0	0.00%
Queen Anne's	60	0	0.00%	4	6.67%	0	0.00%	54	90.00%	1	1.67%	0	0.00%	0	0.00%	0	0.00%	1	1.67%	0	0.00%	0	0.00%
St. Mary's	115	0	0.00%	16	13.91%	6	5.22%	56	48.70%	6	5.22%	29	25.22%	0	0.00%	0	0.00%	1	0.87%	0	0.00%	1	0.87%
Somerset	16	0	0.00%	0	0.00%	0	0.00%	7	43.75%	1	6.25%	8	50.00%	0	0.00%	0	0.00%	0	0.00%	0	0.00%	0	0.00%
Talbot	24	0	0.00%	0	0.00%	0	0.00%	24	100.00%	0	0.00%	0	0.00%	0	0.00%	0	0.00%	0	0.00%	0	0.00%	0	0.00%
Washington	104	0	0.00%	17	16.35%	0	0.00%	79	75.96%	0	0.00%	6	5.77%	0	0.00%	2	1.92%	0	0.00%	0	0.00%	0	0.00%
Wicomico	76	0	0.00%	31	40.79%	0	0.00%	14	18.42%	3	3.95%	28	36.84%	0	0.00%	0	0.00%	0	0.00%	0	0.00%	0	0.00%
Worcester	38	0	0.00%	21	55.26%	0	0.00%	4	10.53%	0	0.00%	13	34.21%	0	0.00%	0	0.00%	0	0.00%	0	0.00%	0	0.00%
Total Local Education Agencies	5,076	22	0.43%	1,187	23.38%	38	0.75%	1,613	31.78%	1,056	20.80%	1,027	20.23%	3	0.06%	97	1.91%	31	0.61%	1	0.02%	1	0.02%
Maryland School for the Blind	4	0	0.00%	0	0.00%	0	0.00%	0	0.00%	3	75.00%	0	0.00%	0	0.00%	0	0.00%	0	0.00%	0	0.00%	1	25.00%
Maryland School for the Deaf	17	0	0.00%	0	0.00%	0	0.00%	0	0.00%	0	0.00%	0	0.00%	0	0.00%	17	100.00%	0	0.00%	0	0.00%	0	0.00%
Total Public Agencies	21	0	0.00%	0	0.00%	0	0.00%	0	0.00%	3	14.29%	0	0.00%	0	0.00%	17	80.95%	0	0.00%	0	0.00%	1	4.76%

\*This Table includes Eligibility 1 and 2 students

Table 16  
 Students with Disabilities by Least Restrictive Environment  
 Ages 6-21  
 October 29, 2004

	Grand Total	Out < 21%		Out 21-60%		Out > 60%		Home		Hospital		Day				Residential			
		Total	Percent	Total	Percent	Total	Percent	Total	Percent	Total	Percent	Public		Private		Public		Private	
												Total	Percent	Total	Percent	Total	Percent	Total	Percent
Total State	100,161	57,345	57.25%	17,138	17.11%	17,749	17.72%	286	0.29%	17	0.02%	3,407	3.40%	3,861	3.85%	47	0.05%	311	0.31%
Allegany	1,399	1,180	84.35%	90	6.43%	89	6.36%	4	0.29%	0	0.00%	0	0.00%	28	2.00%	0	0.00%	8	0.57%
Anne Arundel	8,814	5,204	59.04%	1,499	17.01%	1,369	15.53%	30	0.34%	3	0.03%	384	4.36%	301	3.42%	3	0.03%	21	0.24%
Baltimore City	13,633	5,557	40.76%	2,891	21.21%	3,711	27.22%	34	0.25%	1	0.01%	665	4.88%	761	5.58%	0	0.00%	13	0.10%
Edison Schools Baltimore	142	90	63.38%	12	8.45%	40	28.17%	0	0.00%	0	0.00%	0	0.00%	0	0.00%	0	0.00%	0	0.00%
Baltimore	12,231	7,112	58.14%	1,082	8.85%	3,051	24.94%	70	0.57%	2	0.02%	433	3.54%	443	3.62%	0	0.00%	38	0.31%
Calvert	2,077	934	44.97%	866	41.69%	163	7.85%	4	0.19%	0	0.00%	69	3.32%	39	1.88%	0	0.00%	2	0.10%
Caroline	630	386	61.27%	151	23.97%	79	12.54%	9	1.43%	0	0.00%	0	0.00%	1	0.16%	0	0.00%	4	0.63%
Carroll	3,303	2,377	71.96%	489	14.80%	285	8.63%	10	0.30%	1	0.03%	25	0.76%	114	3.45%	0	0.00%	2	0.06%
Cecil	2,224	1,671	75.13%	279	12.54%	214	9.62%	8	0.36%	0	0.00%	1	0.04%	48	2.16%	1	0.04%	2	0.09%
Charles	2,105	1,326	62.99%	405	19.24%	267	12.68%	9	0.43%	0	0.00%	44	2.09%	48	2.28%	1	0.05%	5	0.24%
Dorchester	487	393	80.70%	67	13.76%	23	4.72%	2	0.41%	0	0.00%	0	0.00%	1	0.21%	0	0.00%	1	0.21%
Frederick	4,408	3,489	79.15%	499	11.32%	253	5.74%	18	0.41%	0	0.00%	90	2.04%	56	1.27%	2	0.05%	1	0.02%
Garrett	626	433	69.17%	115	18.37%	73	11.66%	2	0.32%	0	0.00%	0	0.00%	3	0.48%	0	0.00%	0	0.00%
Harford	5,370	3,766	70.13%	1,085	20.20%	215	4.00%	13	0.24%	1	0.02%	127	2.36%	142	2.64%	3	0.06%	18	0.34%
Howard	4,293	3,153	73.45%	721	16.79%	225	5.24%	3	0.07%	0	0.00%	81	1.89%	98	2.28%	7	0.16%	5	0.12%
Kent	319	234	73.35%	50	15.67%	34	10.66%	1	0.31%	0	0.00%	0	0.00%	0	0.00%	0	0.00%	0	0.00%
Montgomery	15,715	8,376	53.30%	2,797	17.80%	3,390	21.57%	29	0.18%	2	0.01%	553	3.52%	552	3.51%	0	0.00%	16	0.10%
Prince George's	13,316	5,104	38.33%	2,928	21.99%	3,687	27.69%	13	0.10%	2	0.02%	460	3.45%	1,060	7.96%	20	0.15%	42	0.32%
Queen Anne's	900	807	89.67%	54	6.00%	13	1.44%	2	0.22%	0	0.00%	4	0.44%	17	1.89%	0	0.00%	3	0.33%
St. Mary's	1,996	1,407	70.53%	341	17.09%	211	10.58%	11	0.55%	0	0.00%	1	0.05%	8	0.40%	7	0.35%	10	0.50%
Somerset	334	273	81.74%	45	13.47%	12	3.59%	1	0.30%	0	0.00%	2	0.60%	0	0.00%	0	0.00%	1	0.30%
Talbot	402	310	77.11%	72	17.91%	19	4.73%	0	0.00%	0	0.00%	0	0.00%	0	0.00%	0	0.00%	1	0.25%
Washington	2,438	1,970	80.80%	212	8.70%	88	3.61%	7	0.29%	0	0.00%	71	2.91%	83	3.40%	0	0.00%	7	0.29%
Wicomico	1,506	1,123	74.57%	203	13.48%	165	10.96%	2	0.13%	3	0.20%	0	0.00%	3	0.20%	2	0.13%	5	0.33%
Worcester	651	524	80.49%	73	11.21%	48	7.37%	4	0.61%	2	0.31%	0	0.00%	0	0.00%	0	0.00%	0	0.00%
Total Local Education Agencies	99,319	57,199	57.59%	17,026	17.14%	17,724	17.85%	286	0.29%	17	0.02%	3,010	3.03%	3,806	3.83%	46	0.05%	205	0.21%
Department of Juvenile Services	119	74	62.18%	36	30.25%	10	8.40%	0	0.00%	0	0.00%	0	0.00%	0	0.00%	0	0.00%	0	0.00%
Baltimore City Juvenile Justice Center	16	3	18.75%	13	81.25%	0	0.00%	0	0.00%	0	0.00%	0	0.00%	0	0.00%	0	0.00%	0	0.00%
Carter Center	9	4	44.44%	0	0.00%	5	55.56%	0	0.00%	0	0.00%	0	0.00%	0	0.00%	0	0.00%	0	0.00%
Cheltenham Detention Facility	13	9	69.23%	4	30.77%	0	0.00%	0	0.00%	0	0.00%	0	0.00%	0	0.00%	0	0.00%	0	0.00%
Cumberland Youth Services Center	31	26	83.87%	3	9.68%	2	6.45%	0	0.00%	0	0.00%	0	0.00%	0	0.00%	0	0.00%	0	0.00%
Lower Eastern Shore Children's Center	3	0	0.00%	3	100.00%	0	0.00%	0	0.00%	0	0.00%	0	0.00%	0	0.00%	0	0.00%	0	0.00%
Maryland Youth Residence Center	4	4	100.00%	0	0.00%	0	0.00%	0	0.00%	0	0.00%	0	0.00%	0	0.00%	0	0.00%	0	0.00%
Noyse Children's Center	7	0	0.00%	7	100.00%	0	0.00%	0	0.00%	0	0.00%	0	0.00%	0	0.00%	0	0.00%	0	0.00%
Schaffer House	3	3	100.00%	0	0.00%	0	0.00%	0	0.00%	0	0.00%	0	0.00%	0	0.00%	0	0.00%	0	0.00%
Thomas JS Waxter Children's Center	5	0	0.00%	2	40.00%	3	60.00%	0	0.00%	0	0.00%	0	0.00%	0	0.00%	0	0.00%	0	0.00%
Thomas O'Farrell	25	25	100.00%	0	0.00%	0	0.00%	0	0.00%	0	0.00%	0	0.00%	0	0.00%	0	0.00%	0	0.00%
Western Maryland Children's Detention Ctr.	3	0	0.00%	3	100.00%	0	0.00%	0	0.00%	0	0.00%	0	0.00%	0	0.00%	0	0.00%	0	0.00%
Adult Corrections	115	47	40.87%	66	57.39%	2	1.74%	0	0.00%	0	0.00%	0	0.00%	0	0.00%	0	0.00%	0	0.00%
Charles H. Hickey School	48	24	50.00%	11	22.92%	13	27.08%	0	0.00%	0	0.00%	0	0.00%	0	0.00%	0	0.00%	0	0.00%
Maryland School for the Blind	166	1	0.60%	0	0.00%	0	0.00%	0	0.00%	0	0.00%	3	1.81%	55	33.13%	1	0.60%	106	63.86%
Maryland School for the Deaf	394	0	0.00%	0	0.00%	0	0.00%	0	0.00%	0	0.00%	394	100.00%	0	0.00%	0	0.00%	0	0.00%
Total Public Agencies	842	146	17.34%	112	13.30%	25	2.97%	0	0.00%	0	0.00%	397	47.15%	55	6.53%	1	0.12%	106	12.59%

\*Percentages calculated on total number of 6-21 year olds.

\*\*This Table includes Eligibility 1 and 2 students

Figure 3  
Students with Disabilities  
Trend by LRE Setting  
Ages 6-21  
1998-2004

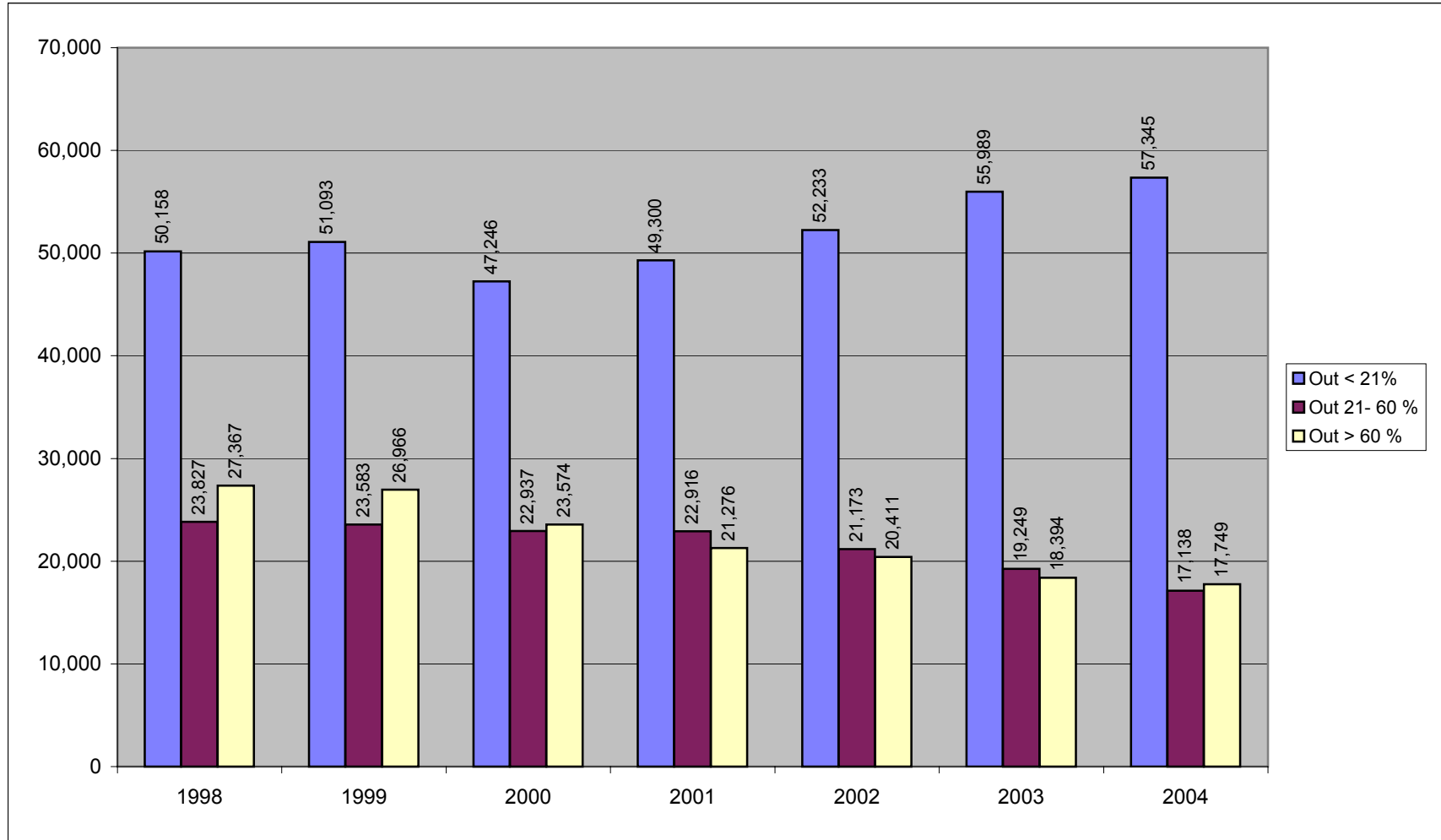




Table 18

Students with Disabilities in LRE M Compared to LRE A in Rank Order

October 29, 2004

LRE M Early Childhood Ages 3-5			LRE A Out < 21% Ages 6-21		
	Total	Percent		Total	Percent
Total State	2,393	19.56%	Total State	57,109	57.06%
Cecil	5	1.75%	Prince George's	5,104	38.33%
Montgomery	77	4.02%	Baltimore City	5,557	40.76%
Calvert	12	4.63%	Calvert	934	44.97%
Baltimore	112	6.21%	Montgomery	8,376	53.30%
Worcester	5	7.25%	Baltimore	7,112	58.14%
Anne Arundel	168	13.84%	Anne Arundel	5,204	59.04%
Allegany	25	16.56%	Caroline	386	61.27%
Wicomico	28	17.50%	Charles	1,326	62.99%
Howard	140	20.00%	Garrett	433	69.17%
Prince George's	304	20.11%	Harford	3,766	70.13%
Carroll	94	23.98%	St. Mary's	1,407	70.49%
Frederick	128	26.28%	Carroll	2,377	71.96%
St. Mary's	72	28.92%	Kent	234	73.35%
Caroline	22	29.33%	Howard	3,153	73.45%
Baltimore City	395	31.08%	Wicomico	1,123	74.57%
Harford	262	37.75%	Cecil	1,671	75.13%
Somerset	13	38.24%	Talbot	310	77.11%
Charles	137	42.68%	Frederick	3,489	79.15%
Dorchester	26	48.15%	Worcester	524	80.49%
Washington	133	58.85%	Dorchester	393	80.70%
Queen Anne's	76	64.41%	Washington	1,970	80.80%
Kent	34	85.00%	Somerset	273	81.74%
Garrett	57	89.06%	Allegany	1,180	84.35%
Talbot	68	100.00%	Queen Anne's	807	89.67%

\*Data does not include Edison Schools

\*\*This Table includes Eligibility 1 and 2 students

Table 19

Maryland Students with Disabilities LRE O Compared to LRE B in Rank Order  
October 29, 2004

LRE O Combined Early Childhood Ages 3-5			LRE B Out 21-60% Ages 6-21		
	Total	Percent		Total	Percent
Total State	2,436	20.03%	Total State	17,014	17.15%
Garrett	0	0.00%	Queen Anne's	54	6.00%
Kent	0	0.00%	Allegany	90	6.43%
Queen Anne's	0	0.00%	Washington	212	8.70%
Talbot	0	0.00%	Baltimore	1,082	8.84%
Charles	1	0.31%	Worcester	73	11.21%
Baltimore City	9	0.71%	Frederick	499	11.32%
Frederick	9	1.85%	Cecil	279	12.54%
Montgomery	44	2.30%	Somerset	45	13.47%
Anne Arundel	30	2.47%	Wicomico	203	13.48%
Carroll	18	4.59%	Dorchester	67	13.76%
Harford	42	6.05%	Carroll	489	14.80%
Caroline	6	8.00%	Kent	50	15.67%
Washington	21	9.29%	Howard	721	16.79%
Calvert	51	19.69%	Anne Arundel	1,499	17.01%
Dorchester	12	22.22%	St. Mary's	341	17.09%
Wicomico	36	22.50%	Montgomery	2,797	17.80%
St. Mary's	57	22.89%	Talbot	72	17.82%
Howard	192	27.43%	Garrett	115	18.37%
Allegany	44	29.14%	Charles	405	19.24%
Worcester	23	33.33%	Harford	1,085	20.18%
Prince George's	626	41.40%	Baltimore City	2,891	21.20%
Somerset	17	50.00%	Prince George's	2,928	21.99%
Cecil	159	55.59%	Caroline	151	23.97%
Baltimore	1,039	57.59%	Calvert	866	41.69%

\*Data does not include Edison Schools

\*\*This Table includes Eligibility 1 and 2 students



Table 20

Students with Disabilities LRE N Compared to LRE C in Rank Order  
October 29, 2004

LRE N Early Childhood Special Education Ages 3-5			LRE C Out > 60% Ages 6-21		
	Total	Percent		Total	Percent
Total State	2,859	23.51%	Total State	17,684	17.82%
Allegany	0	0.00%	Queen Anne's	13	1.44%
Garrett	0	0.00%	Somerset	12	3.59%
Kent	0	0.00%	Washington	88	3.61%
Talbot	0	0.00%	Harford	215	4.00%
Washington	2	0.88%	Talbot	19	4.70%
Charles	4	1.25%	Dorchester	23	4.72%
Somerset	1	2.94%	Howard	225	5.24%
Wicomico	5	3.13%	Frederick	253	5.74%
Worcester	3	4.35%	Allegany	89	6.36%
Queen Anne's	10	8.47%	Worcester	48	7.37%
Howard	86	12.29%	Calvert	163	7.85%
Dorchester	7	12.96%	Carroll	285	8.62%
St. Mary's	41	16.47%	Cecil	214	9.62%
Frederick	93	19.10%	St. Mary's	211	10.57%
Harford	137	19.74%	Kent	34	10.66%
Baltimore City	291	22.90%	Wicomico	165	10.96%
Prince George's	363	24.01%	Garrett	73	11.66%
Baltimore	434	24.06%	Caroline	79	12.54%
Cecil	71	24.83%	Charles	267	12.68%
Carroll	104	26.53%	Anne Arundel	1,369	15.53%
Anne Arundel	383	31.55%	Montgomery	3,390	21.57%
Calvert	81	31.27%	Baltimore	3,051	24.94%
Caroline	26	34.67%	Baltimore City	3,711	27.21%
Montgomery	717	37.42%	Prince George's	3,687	27.69%

\*Data does not include Edison Schools

\*\*This Table includes Eligibility 1 and 2 students

Table 21

Maryland Special Education - Focused Monitoring LRE  
 Quartile Clusters  
 Least Restrictive Environment for Students with Disabilities Ages 3-5 Years Old

Categories	LRE M Goal ≥ 60 %				LRE O Goal See M + O				LRE M + O Goal ≥ 80 %				LRE N Standard ≤ 15 %						
	EARLY CHILDHOOD SETTING				PART-TIME EARLY CHILDHOOD/PART-TIME EARLY CHILDHOOD SPECIAL EDUCATION SETTING				COMBINED LRE M & N				EARLY CHILDHOOD SPECIAL EDUCATION SETTING						
	Total 3-5	Total LRE M	Sub Rank	Percent	Total 3-5	Total LRE O	Sub Rank	Percent	Total 3-5	Total LRE M+O	Sub Rank	Percent	Total 3-5	Total LRE N	Sub Rank	Percent			
	Total State	12,161	2,393	19.68%	Total State	12,161	2,436	20.03%	Total State	12,161	4,829	39.71%	Total State	12,164	2,859	23.50%			
1	Allegany	151	25	18	16.56%	Allegany	151	44	6	29.14%	Allegany	151	69	45.70%	Allegany	151	0	1	0.00%
	Garrett	64	57	2	89.06%	Garrett	64	0	21	0.00%	Garrett	64	57	89.06%	Garrett	64	0	1	0.00%
	Kent	40	34	3	85.00%	Kent	40	0	21	0.00%	Kent	40	34	85.00%	Kent	40	0	1	0.00%
	Somerset	34	13	8	38.24%	Somerset	34	17	3	50.00%	Somerset	34	30	88.24%	Somerset	34	1	7	2.94%
	Talbot	68	68	1	100.00%	Talbot	68	0	21	0.00%	Talbot	68	68	100.00%	Talbot	68	0	1	0.00%
	Washington	226	133	5	58.85%	Washington	226	21	12	9.29%	Washington	226	154	68.14%	Washington	226	2	5	0.88%
2	Charles	321	137	7	42.68%	Charles	321	1	20	0.31%	Charles	321	138	42.99%	Charles	321	4	6	1.25%
	Dorchester	54	26	6	48.15%	Dorchester	54	12	10	22.22%	Dorchester	54	38	70.37%	Dorchester	54	7	12	12.96%
	Howard	700	140	16	20.00%	Howard	700	192	7	27.43%	Howard	700	332	47.43%	Howard	700	86	11	12.29%
	St. Mary's	249	72	12	28.92%	St. Mary's	249	57	8	22.89%	St. Mary's	249	129	51.81%	St. Mary's	249	41	13	16.47%
	Wicomico	160	28	17	17.50%	Wicomico	160	36	9	22.50%	Wicomico	160	64	40.00%	Wicomico	160	5	8	3.13%
	Worcester	69	5	20	7.25%	Worcester	69	23	5	33.33%	Worcester	69	28	40.58%	Worcester	69	3	9	4.35%
3	Baltimore	1,804	112	21	6.21%	Baltimore	1,804	1,039	1	57.59%	Baltimore	1,804	1,151	63.80%	Baltimore	1,804	434	18	24.06%
	Baltimore City	1,271	395	10	31.08%	Baltimore City	1,271	9	19	0.71%	Baltimore City	1,271	404	31.79%	Baltimore City	1,271	291	16	22.90%
	Cecil	286	5	24	1.75%	Cecil	286	159	2	55.59%	Cecil	286	164	57.34%	Cecil	286	71	19	24.83%
	Harford	694	262	9	37.75%	Harford	694	42	14	6.05%	Harford	694	304	43.80%	Harford	694	137	15	19.74%
	Prince George's	1,512	304	15	20.11%	Prince Georg	1,512	626	4	41.40%	Prince Georg	1,512	930	61.51%	Prince George's	1,512	363	17	24.01%
	Queen Anne's	118	76	4	64.41%	Queen Anne's	118	0	21	0.00%	Queen Anne's	118	76	64.41%	Queen Anne's	118	10	10	8.47%
4	Anne Arundel	1,214	168	19	13.84%	Anne Arunde	1,214	30	16	2.47%	Anne Arunde	1,214	198	16.31%	Anne Arundel	1,214	383	22	31.55%
	Calvert	259	12	22	4.63%	Calvert	259	51	11	19.69%	Calvert	259	63	24.32%	Calvert	259	81	21	31.27%
	Caroline	75	22	11	29.33%	Caroline	75	6	13	8.00%	Caroline	75	28	37.33%	Caroline	75	26	23	34.67%
	Carroll	392	94	14	23.98%	Carroll	392	18	15	4.59%	Carroll	392	112	28.57%	Carroll	392	104	20	26.53%
	Frederick	487	128	13	26.28%	Frederick	487	9	18	1.85%	Frederick	487	137	28.13%	Frederick	487	93	14	19.10%
	Montgomery	1,913	77	23	4.03%	Montgomery	1,913	44	17	2.30%	Montgomery	1,913	121	6.33%	Montgomery	1,913	717	24	37.48%

Quartile determination based on review of all indicators.  
 Overall score calculated on assigned points compared to the standard.

\*Percentages calculated on total number of 3-5 year olds  
 \*\*This Table includes Eligibility 1 and 2 students

Table 22

Maryland Special Education - Focused Monitoring LRE  
 Quartile Clusters  
 Least Restrictive Environment for 6-21 Year Olds

Categories	LRE A ( Out < 21% )				LRE B ( Out 21 < 60% )				LRE A + B				LRE C ( Out > 60% )							
	Goal ≥ 60 %				Goal See A +B				Goal ≥ 80 %				Standard ≤ 15 %							
	Total 6-21	Total LRE A	LRE A Sub-Ranking	Percent	Total 6-21	Total LRE B	LRE B Sub-Ranking	Percent	Total 6-21	Total LRE A+B	LRE A+B Sub-Ranking	Percent	Total 6-21	Total LRE C	LRE C Sub-Ranking	Percent				
	Total State	99,177	57,109	57.58%	Total State	99,177	17,014	17.16%	Total State	99,177	74,123	74.74%	Total State	99,177	17,684	17.83%				
1	Dorchester	487	393	5	80.70%	Dorchester	487	67	15	13.76%	Dorchester	487	460	4	94.46%	Dorchester	487	23	5	4.72%
	Harford	5,370	3,766	15	70.13%	Harford	5,370	1,085	5	20.20%	Harford	5,370	4,851	8	90.34%	Harford	5,370	215	4	4.00%
	Queen Anne's	900	807	1	89.67%	Queen Anne's	900	54	24	6.00%	Queen Anne's	900	861	1	95.67%	Queen Anne's	900	13	1	1.44%
	Somerset	334	273	3	81.74%	Somerset	334	45	17	13.47%	Somerset	334	318	2	95.21%	Somerset	334	12	2	3.59%
	Talbot	402	310	8	77.11%	Talbot	402	72	8	17.91%	Talbot	402	382	3	95.02%	Talbot	402	19	6	4.73%
	Washington	2,438	1,970	4	80.80%	Washington	2,438	212	22	8.70%	Washington	2,438	2,182	10	89.50%	Washington	2,438	88	3	3.61%
2	Allegany	1,399	1,180	2	84.35%	Allegany	1,399	90	23	6.43%	Allegany	1,399	1,270	6	90.78%	Allegany	1,399	89	9	6.36%
	Calvert	2,077	934	22	44.97%	Calvert	2,077	866	1	41.69%	Calvert	2,077	1,800	17	86.66%	Calvert	2,077	163	11	7.85%
	Caroline	630	386	18	61.27%	Caroline	630	151	2	23.97%	Caroline	630	537	18	85.24%	Caroline	630	79	18	12.54%
	Frederick	4,408	3,489	7	79.15%	Frederick	4,408	499	19	11.32%	Frederick	4,408	3,988	7	90.47%	Frederick	4,408	253	8	5.74%
	Howard	4,293	3,153	11	73.45%	Howard	4,293	721	12	16.79%	Howard	4,293	3,874	9	90.24%	Howard	4,293	225	7	5.24%
	Worcester	651	524	6	80.49%	Worcester	651	73	20	11.21%	Worcester	651	597	5	91.71%	Worcester	651	48	10	7.37%
3	Carroll	3,303	2,377	13	71.96%	Carroll	3,303	489	14	14.80%	Carroll	3,303	2,866	16	86.77%	Carroll	3,303	285	12	8.63%
	Cecil	2,224	1,671	9	75.13%	Cecil	2,224	279	18	12.54%	Cecil	2,224	1,950	13	87.68%	Cecil	2,224	214	13	9.62%
	Charles	2,105	1,326	17	62.99%	Charles	2,105	405	6	19.24%	Charles	2,105	1,731	19	82.23%	Charles	2,105	267	19	12.68%
	Garrett	626	433	16	69.17%	Garrett	626	115	7	18.37%	Garrett	626	548	15	87.54%	Garrett	626	73	17	11.66%
	Kent	319	234	12	73.35%	Kent	319	50	13	15.67%	Kent	319	284	11	89.03%	Kent	319	34	15	10.66%
	St. Mary's	1,996	1,407	14	70.49%	St. Mary's	1,996	341	10	17.08%	St. Mary's	1,996	1,748	14	87.58%	St. Mary's	1,996	211	14	10.57%
4	Anne Arundel	8,814	5,204	19	59.04%	Anne Arundel	8,814	1,499	11	17.01%	Anne Arundel	8,814	6,703	20	76.05%	Anne Arundel	8,814	1,369	20	15.53%
	Baltimore	12,231	7,112	20	58.15%	Baltimore	12,231	1,082	21	8.85%	Baltimore	12,231	8,194	22	66.99%	Baltimore	12,231	3,051	22	24.94%
	Baltimore City	13,633	5,557	23	40.76%	Baltimore City	13,633	2,891	4	21.21%	Baltimore City	13,633	8,448	23	61.97%	Baltimore City	13,633	3,711	23	27.22%
	Montgomery	15,715	8,376	21	53.30%	Montgomery	15,715	2,797	9	17.80%	Montgomery	15,715	11,173	21	71.10%	Montgomery	15,715	3,390	21	21.57%
	Prince George's	13,316	5,104	24	38.33%	Prince George's	13,316	2,928	3	21.99%	Prince George's	13,316	8,032	24	60.32%	Prince George's	13,316	3,687	24	27.69%
	Wicomico	1,506	1,123	10	74.57%	Wicomico	1,506	203	16	13.48%	Wicomico	1,506	1,326	12	88.05%	Wicomico	1,506	165	16	10.96%

Quartile determination based on review of all indicators.  
 Overall score calculated on assigned points compared to the goal.

\*\*This Table includes Eligibility 1 and 2 students

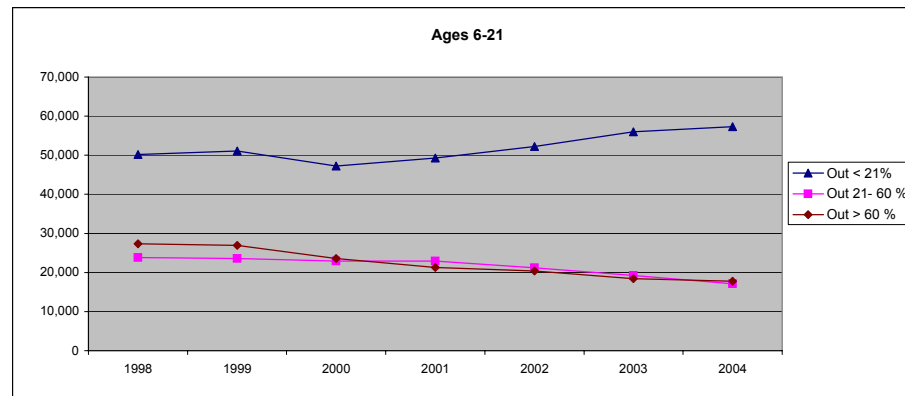
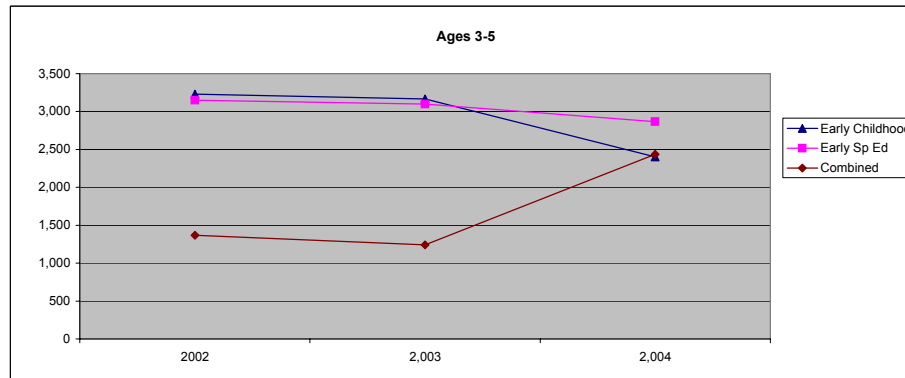
Table 23  
 Students with Disabilities Served in Home/Hospital  
 Ages 3-21  
 October 29, 2004

	Grand Total	Home		Hospital	
		Number	Percent	Number	Percent
Total State	111,498	405	0.36%	20	0.02%
Allegany	1,550	11	0.71%	0	0.00%
Anne Arundel	10,028	39	0.39%	3	0.03%
Baltimore City	14,904	82	0.55%	1	0.01%
Edison Schools	160	0	0.00%	0	0.00%
Baltimore	14,035	70	0.50%	2	0.01%
Calvert	2,336	7	0.30%	2	0.09%
Caroline	705	9	1.28%	0	0.00%
Carroll	3,695	13	0.35%	1	0.03%
Cecil	2,510	8	0.32%	0	0.00%
Charles	2,426	10	0.41%	0	0.00%
Dorchester	541	3	0.55%	0	0.00%
Frederick	4,895	18	0.37%	0	0.00%
Garrett	690	2	0.29%	0	0.00%
Harford	6,064	36	0.59%	1	0.02%
Howard	4,993	8	0.16%	0	0.00%
Kent	359	7	1.95%	0	0.00%
Montgomery	17,628	32	0.18%	2	0.01%
Prince George's	14,828	16	0.11%	3	0.02%
Queen Anne's	1,018	2	0.20%	0	0.00%
St. Mary's	2,245	11	0.49%	0	0.00%
Somerset	368	1	0.27%	0	0.00%
Talbot	470	0	0.00%	0	0.00%
Washington	2,664	12	0.45%	0	0.00%
Wicomico	1,666	4	0.24%	3	0.18%
Worcester	720	4	0.56%	2	0.28%

\*This Table includes Eligibility 1 and 2 students

Table 24  
Students with Disabilities Trend by LRE  
1995 - 2004

	1995	1996	1997	1998	1999	2000	2001	2002	2003	2004
Total all LRE	100,863	104,630	109,084	111,688	111,711	112,078	112,426	113,128	113,760	112,388
Ages 3-5										
Early Childhood (M)	NA	NA	NA	NA	NA	2,513	2,652	3,229	3,167	2,402
Early Childhood Special Ed (N)	NA	NA	NA	NA	NA	2,326	3,144	3,150	3,098	2,868
Combined (O)	NA	NA	NA	NA	NA	1,871	1,115	1,370	1,242	2,436
Ages 6-21										
Out < 21% (A)	43,295	44,997	48,127	50,158	51,093	47,246	49,300	52,233	55,989	57,345
Out 21- 60% (B)	25,596	24,589	24,436	23,827	23,583	22,937	22,916	21,173	19,249	17,138
Out > 60% (C)	23,010	25,479	26,530	27,367	26,966	23,574	21,276	20,411	18,394	17,749



\*This Table includes Eligibility 1 and 2 students

Table 25  
 Students With Disabilities by Race and LRE  
 Ages 3-5  
 October 29, 2004

	Grand Total	Home		Hospital		Itinerant		Reverse Mainstream		Early Childhood		Early Childhood Special Ed		Combined		Day				Residential					
		Total	Percent	Total	Percent	Total	Percent	Total	Percent	Total	Percent	Total	Percent	Total	Percent	Total	Percent	Public		Private		Public		Private	
																		Total	Percent	Total	Percent	Total	Percent	Total	Percent
Total State	12,227	119	0.97%	3	0.02%	3,858	31.55%	140	1.15%	2,402	19.65%	2,868	23.46%	2,436	19.92%	269	2.20%	129	1.06%	1	0.01%	2	0.02%		
American Indian/Alaskan Native	52	0	0.00%	0	0.00%	13	25.00%	0	0.00%	12	23.08%	18	34.62%	8	15.38%	1	1.92%	0	0.00%	0	0.00%	0	0.00%		
Asian	406	1	0.25%	0	0.00%	101	24.88%	17	4.19%	51	12.56%	141	34.73%	72	17.73%	9	2.22%	14	3.45%	0	0.00%	0	0.00%		
African American	3,963	39	0.98%	2	0.05%	867	21.88%	54	1.36%	849	21.42%	1,090	27.50%	926	23.37%	83	2.09%	52	1.31%	1	0.03%	0	0.00%		
White	7,053	77	1.09%	1	0.01%	2,663	37.76%	64	0.91%	1,375	19.50%	1,383	19.61%	1,284	18.21%	153	2.17%	51	0.72%	0	0.00%	2	0.03%		
Hispanic	753	2	0.27%	0	0.00%	214	28.42%	5	0.66%	115	15.27%	236	31.34%	146	19.39%	23	3.05%	12	1.59%	0	0.00%	0	0.00%		

\*This Table includes Eligibility 1 and 2 students

Students with Disabilities by Race and LRE  
 Ages 6-21  
 October 29, 2004

	Grand Total	Out < 21%		Out 21-60%		Out > 60%		Home		Hospital		Day				Residential			
		Total	Percent	Total	Percent	Total	Percent	Total	Percent	Total	Percent	Public		Private		Public		Private	
												Total	Percent	Total	Percent	Total	Percent	Total	Percent
Total State	100,161	57,345	57.25%	17,138	17.11%	17,749	17.72%	286	0.29%	17	0.02%	3,407	3.40%	3,861	3.85%	47	0.05%	311	0.31%
American Indian/Alaskan Native	388	233	60.05%	57	14.69%	60	15.46%	2	0.52%	0	0.00%	12	3.09%	23	5.93%	1	0.26%	0	0.00%
Asian	1,989	1,127	56.66%	298	14.98%	424	21.32%	3	0.15%	0	0.00%	80	4.02%	51	2.56%	0	0.00%	6	0.30%
African American	41,457	18,714	45.14%	8,749	21.10%	10,240	24.70%	101	0.24%	9	0.02%	1,659	4.00%	1,838	4.43%	25	0.06%	122	0.29%
White	50,383	34,199	67.88%	6,692	13.28%	5,769	11.45%	165	0.33%	7	0.01%	1,514	3.00%	1,838	3.65%	20	0.04%	179	0.36%
Hispanic	5,944	3,072	51.68%	1,342	22.58%	1,256	21.13%	15	0.25%	1	0.02%	142	2.39%	111	1.87%	1	0.02%	4	0.07%

\*This Table includes Eligibility 1 and 2 students

Students with Disabilities by Race and LRE  
 Ages 3-21  
 October 29, 2004

	Grand Total	Out < 21%		Out 21-60%		Out > 60%		Home		Hospital		Day				Residential			
		Total	Percent	Total	Percent	Total	Percent	Total	Percent	Total	Percent	Public		Private		Public		Private	
												Total	Percent	Total	Percent	Total	Percent	Total	Percent
Total State	112,388	57,345	51.02%	17,138	15.25%	17,749	15.79%	286	0.25%	20	0.02%	3,676	3.27%	3,990	3.55%	48	0.04%	313	0.28%
American Indian/Alaskan Native	440	233	52.95%	57	12.95%	60	13.64%	2	0.45%	0	0.00%	13	2.95%	23	0.00%	1	0.23%	0	5.23%
Asian	2,395	1,127	47.06%	298	12.44%	424	17.70%	3	0.13%	0	0.00%	89	3.72%	65	0.25%	0	0.00%	6	2.71%
African American	45,420	18,714	41.20%	8,749	19.26%	10,240	22.55%	101	0.22%	11	0.02%	1,742	3.84%	1,890	0.27%	26	0.06%	122	4.16%
White	57,436	34,199	59.54%	6,692	11.65%	5,769	10.04%	165	0.29%	8	0.01%	1,667	2.90%	1,889	0.32%	20	0.03%	181	3.29%
Hispanic	6,697	3,072	45.87%	1,342	20.04%	1,256	18.75%	15	0.22%	1	0.01%	165	2.46%	123	0.06%	1	0.01%	4	1.84%

\*This Table includes Eligibility 1 and 2 students

Table 26

\*Number and Percent of Students with Disabilities by ESY Service  
 Ages 3-21  
 October 29, 2004

	Grand Total	ESY	
		Total	Percent
Total State	112,388	10,242	9.1%
Allegany	1,550	112	7.2
Anne Arundel	10,028	1,065	10.6
Baltimore City	14,904	418	2.8
Edison Schools	160	0	0.0
Baltimore	14,035	1,061	7.6
Calvert	2,336	76	3.3
Caroline	705	6	0.9
Carroll	3,695	233	6.3
Cecil	2,510	54	2.2
Charles	2,426	128	5.3
Dorchester	541	15	2.8
Frederick	4,895	851	17.4
Garrett	690	32	4.6
Harford	6,064	295	4.9
Howard	4,993	1,091	21.9
Kent	359	67	18.7
Montgomery	17,628	2,129	12.1
Prince George's	14,828	1,821	12.3
Queen Anne's	1,018	180	17.7
St. Mary's	2,245	134	6.0
Somerset	368	23	6.3
Talbot	470	8	1.7
Washington	2,664	209	7.8
Wicomico	1,666	124	7.4
Worcester	720	3	0.4
Total Local Education Agencies	111,498	10,135	9.1
Department of Juvenile Services	167	0	0.0
Adult Corrections	115	0	0.0
Maryland School for the Blind	180	91	50.6
Maryland School for the Deaf	428	16	3.7
Total Public Agencies	890	107	12.0

\*Data may not reflect actual numbers or data may be incomplete. MSDE is working with local agencies to improve the accuracy of the data.

\*\*This Table includes Eligibility 1 and 2 students

Table 27

\*Number and Percent of Students with Disabilities Placed by Their Parents in Private Schools  
Ages 3-21  
October 29, 2004

	Eligibility 1 and 2 Grand Total	Eligibility 2 and 3		Eligibility 2				Eligibility 3	
		Total	Percent	Receiving Special Education Service		*Only Related Service		*Not Receiving Service	
				Total	Percent	Total	Percent	Total	Percent
Total State	111,498	1,475	1.32%	1,354	1.2%	11	0.0%	121	0.1%
Allegany	1,550	22	1.42%	16	1.0%	0	0.0%	6	0.4%
Anne Arundel	10,028	143	1.43%	143	1.4%	1	0.0%	0	0.0%
Baltimore City	14,904	189	1.27%	179	1.2%	9	0.1%	10	0.1%
Edison Schools	160	0	0.00%	0	0.0%	0	0.0%	0	0.0%
Baltimore	14,035	329	2.34%	329	2.3%	0	0.0%	0	0.0%
Calvert	2,336	24	1.03%	7	0.3%	0	0.0%	17	0.7%
Caroline	705	2	0.28%	2	0.3%	0	0.0%	0	0.0%
Carroll	3,695	104	2.81%	91	2.5%	0	0.0%	13	0.4%
Cecil	2,510	24	0.96%	22	0.9%	0	0.0%	2	0.1%
Charles	2,426	38	1.57%	30	1.2%	0	0.0%	8	0.3%
Dorchester	541	2	0.37%	2	0.4%	0	0.0%	0	0.0%
Frederick	4,895	53	1.08%	48	1.0%	0	0.0%	5	0.1%
Garrett	690	0	0.00%	0	0.0%	0	0.0%	0	0.0%
Harford	6,064	138	2.28%	128	2.1%	0	0.0%	10	0.2%
Howard	4,993	11	0.22%	7	0.1%	0	0.0%	4	0.1%
Kent	359	4	1.11%	4	1.1%	0	0.0%	0	0.0%
Montgomery	17,628	307	1.74%	280	1.6%	1	0.0%	27	0.2%
Prince George's	14,828	0	0.00%	0	0.0%	0	0.0%	0	0.0%
Queen Anne's	1,018	0	0.00%	0	0.0%	0	0.0%	0	0.0%
St. Mary's	2,245	35	1.56%	31	1.4%	0	0.0%	4	0.2%
Somerset	368	2	0.54%	2	0.5%	0	0.0%	0	0.0%
Talbot	470	17	3.62%	2	0.4%	0	0.0%	15	3.2%
Washington	2,664	10	0.38%	10	0.4%	0	0.0%	0	0.0%
Wicomico	1,666	10	0.60%	10	0.6%	0	0.0%	0	0.0%
Worcester	720	11	1.53%	11	1.5%	0	0.0%	0	0.0%

\*Data may not reflect actual numbers or data may be incomplete. MSDE is working with local agencies to improve the accuracy of the data.

\*\*This Table includes Eligibility 1, 2, and 3 students



Table 28

\*Number and Percent of Students with Disabilities Placed by Their Parents in Private Schools  
 Ages 3-5  
 October 29, 2004

	Eligibility 1 and 2 Grand Total	Eligibility 2 and 3		Eligibility 2				Eligibility 3	
		Total	Percent	Receiving Special Education Service		*Only Related Service		*Not Receiving Service	
				Total	Percent	Total	Percent	Total	Percent
Total State	12,227	378	3.09%	369	3.0%	0	0.0%	9	0.1%
Allegany	151	3	1.99%	3	2.0%	0	0.0%	0	0.0%
Anne Arundel	1,214	22	1.81%	22	1.8%	0	0.0%	0	0.0%
Baltimore City	1,271	52	4.09%	48	3.8%	0	0.0%	4	0.3%
Edison Schools	18	0	0.00%	0	0.0%	0	0.0%	0	0.0%
Baltimore	1,804	175	9.70%	175	9.7%	0	0.0%	0	0.0%
Calvert	259	2	0.77%	2	0.8%	0	0.0%	0	0.0%
Caroline	75	1	1.33%	1	1.3%	0	0.0%	0	0.0%
Carroll	392	14	3.57%	14	3.6%	0	0.0%	0	0.0%
Cecil	286	10	3.50%	10	3.5%	0	0.0%	0	0.0%
Charles	321	7	2.18%	5	1.6%	0	0.0%	2	0.6%
Dorchester	54	2	3.70%	2	3.7%	0	0.0%	0	0.0%
Frederick	487	1	0.21%	1	0.2%	0	0.0%	0	0.0%
Garrett	64	0	0.00%	0	0.0%	0	0.0%	0	0.0%
Harford	694	16	2.31%	14	2.0%	0	0.0%	2	0.3%
Howard	700	0	0.00%	0	0.0%	0	0.0%	0	0.0%
Kent	40	2	5.00%	2	5.0%	0	0.0%	0	0.0%
Montgomery	1,913	58	3.03%	58	3.0%	0	0.0%	0	0.0%
Prince George's	1,512	0	0.00%	0	0.0%	0	0.0%	0	0.0%
Queen Anne's	118	0	0.00%	0	0.0%	0	0.0%	0	0.0%
St. Mary's	249	2	0.80%	2	0.8%	0	0.0%	0	0.0%
Somerset	34	1	2.94%	1	2.9%	0	0.0%	0	0.0%
Talbot	68	3	4.41%	2	2.9%	0	0.0%	1	1.5%
Washington	226	2	0.88%	2	0.9%	0	0.0%	0	0.0%
Wicomico	160	2	1.25%	2	1.3%	0	0.0%	0	0.0%
Worcester	69	3	4.35%	3	4.3%	0	0.0%	0	0.0%

\*Data may not reflect actual numbers or data may be incomplete. MSDE is working with local agencies to improve the accuracy of the data.

\*\*This Table includes Eligibility 1, 2, and 3 students

Table 29

\*Number and Percent of Students with Disabilities with IEPs Older than 13 Months and Evaluations Which Need to be Updated  
Ages 3-21  
October 29, 2004

	Grand	IEPs Older than 13 Months		Evaluations Which Need to be Updated	
	Total	Total	Percent	Total	Percent
Total State	112,388	759	0.7%	5,219	4.6%
Allegany	1,550	10	0.6	41	2.6
Anne Arundel	10,028	387	3.9	232	2.3
Baltimore City	14,904	84	0.6	122	0.8
Edison Schools	160	0	0.0	0	0.0
Baltimore	14,035	0	0.0	49	0.3
Calvert	2,336	1	0.0	7	0.3
Caroline	705	0	0.0	2	0.3
Carroll	3,695	2	0.1	21	0.6
Cecil	2,510	5	0.2	54	2.2
Charles	2,426	37	1.5	184	7.6
Dorchester	541	1	0.2	1	0.2
Frederick	4,895	71	1.5	25	0.5
Garrett	690	3	0.4	0	0.0
Harford	6,064	0	0.0	208	3.4
Howard	4,993	28	0.6	12	0.2
Kent	359	5	1.4	0	0.0
Montgomery	17,628	0	0.0	2,837	16.1
Prince George's	14,828	84	0.6	1,287	8.7
Queen Anne's	1,018	5	0.5	65	6.4
St. Mary's	2,245	1	0.0	5	0.2
Somerset	368	0	0.0	0	0.0
Talbot	470	4	0.9	9	1.9
Washington	2,664	23	0.9	30	1.1
Wicomico	1,666	1	0.1	0	0.0
Worcester	720	0	0.0	10	1.4
Total Local Education Agencies	111,498	752	0.7	5,201	4.7
Department of Juvenile Services	119	18	15.1	13	10.9
Adult Corrections	115	0	0.0	2	1.7
Hickey School	48	7	14.6	9	18.8
Maryland School for the Blind	180	0	0.0	7	3.9
Maryland School for the Deaf	428	0	0.0	0	0.0
Total Public Agencies	890	7	0.8	18	2.0

\*Data may not reflect actual numbers or data may be incomplete. MSDE is working with local agencies to improve the accuracy of the data.

\*\*This Table includes Eligibility 1 and 2 students

Table 30

Number of Students in Nonpublic Schools by Disability  
October 29, 2004

NONPUBLIC SCHOOL	TOTAL	Mental	Hard of	Deaf	Speech/	Visually	Emotionally	Orthopedically	Other	Specific	Multiple	Deaf/ Blind	Traumatic		Developmental
		Retardation	Hearing		Language	Impaired	Disturbed	Impaired	Health	Learning			Brain	Autism	
GRAND TOTAL	4,313	175	7	3	462	0	1,836	50	166	290	696	0	33	495	100
ACCOTINK	8	1	0	0	0	0	4	0	0	0	3	0	0	0	0
ARROW CENTERS	77	0	0	0	0	0	66	0	6	2	3	0	0	0	0
AU CLAIR	11	2	0	0	0	0	7	0	0	0	1	0	0	1	0
BALTIMORE ACADEMY	46	2	0	0	0	0	40	0	2	1	1	0	0	0	0
BANCROFT	5	1	0	0	1	0	0	0	0	0	0	0	0	3	0
BENEDICTINE	41	8	0	0	0	0	0	0	2	0	16	0	0	15	0
BENNINGTON	9	0	0	0	0	0	8	0	0	0	1	0	0	0	0
CAMPBILL SPECIAL SCHOOL	1	0	0	0	0	0	0	0	0	0	1	0	0	0	0
CEDAR RIDGE	35	1	0	0	0	0	20	0	8	4	2	0	0	0	0
CHAMBERLAIN SCHOOL	1	0	0	0	0	0	1	0	0	0	0	0	0	0	0
CHELSEA SCHOOL	48	0	0	0	0	0	2	0	0	31	12	0	0	3	0
CHESAPEAKE SPEECH SCHOOL	1	0	0	0	0	0	0	0	0	0	0	0	0	1	0
CHESAPEAKE TREATMENT CENTER	2	0	0	0	0	0	2	0	0	0	0	0	0	0	0
CHESAPEAKE YOUTH ACADEMY	18	1	0	0	0	0	11	0	0	2	4	0	0	0	0
CHILDREN'S GUILD PG COUNTY	73	0	0	0	2	0	42	0	0	0	27	0	0	2	0
CHILDRENS GUILD AA CO	40	0	0	0	0	0	29	0	1	0	10	0	0	0	0
CHILDRENS GUILD BALTIMORE CITY	81	2	0	0	0	0	69	0	3	1	4	0	0	1	1
CHIMES	70	36	0	0	0	0	8	0	1	0	11	0	0	14	0
COMMUNITY SCHOOL OF MD.	44	2	0	0	0	0	0	0	0	0	5	0	0	36	1
DEVEREAUX,GA.	1	0	0	0	0	0	1	0	0	0	0	0	0	0	0
DEVEREAUX,PA.	1	0	0	0	0	0	0	0	0	0	1	0	0	0	0
EDGEMEADE	41	1	0	0	0	0	32	0	1	0	7	0	0	0	0
EPISCOPAL CTR. FOR CHILDR	13	0	0	0	0	0	11	0	0	0	2	0	0	0	0
FAMILY ADVOCACY	45	0	0	0	0	0	43	0	0	0	2	0	0	0	0
FLORENCE BERTELL ACADEMY	46	0	0	0	0	0	32	0	1	1	12	0	0	0	0
FORBUSH- MARGARET BRENT	21	0	0	0	0	0	0	0	0	0	0	0	0	21	0
FORBUSH BALTIMORE COUNTY	198	2	0	0	0	0	144	0	1	2	16	0	1	30	2
FOUNDATION INTERMEDIATE SCHOOL	175	1	0	0	0	0	134	0	2	1	37	0	0	0	0
FOUNDATION SCH OF MONTGOMERY	77	0	0	0	0	0	72	0	4	1	0	0	0	0	0
FROST SCHOOL	39	0	0	0	0	0	29	0	0	0	4	0	0	6	0
GATEWAY	49	0	1	0	8	0	1	0	4	2	2	0	0	29	2
GOOD SHEPHERD	34	0	0	0	0	0	30	0	1	1	0	0	1	1	0
GRACE ACADEMY	1	0	0	0	1	0	0	0	0	0	0	0	0	0	0
GRACE LUTHERAN	1	0	0	0	1	0	0	0	0	0	0	0	0	0	0
GRAFTON, MD	24	2	0	0	0	0	3	0	0	0	5	0	0	14	0
GRAFTON,VA.	15	2	0	0	0	0	1	0	0	0	3	0	0	9	0
GROVE SCHOOL, CONN. ONP	1	0	0	0	0	0	1	0	0	0	0	0	0	0	0

\*\*This Table includes Eligibility 1 and 2 students

Table 30 (continued)  
 Number of Students in Nonpublic Schools by Disability  
 October 29, 2004

NONPUBLIC SCHOOL	TOTAL	Mental	Hard of	Speech/	Visually	Emotionally	Orthopedically	Other	Specific	Multiple	Deaf/	Traumatic	Developmental	
		Retardation	Hearing	Deaf	Language	Impaired	Disturbed	Impaired	Health	Learning	Disabilities	Blind	Brain	Autism
HANNAH MORE AT SPHS	1	0	0	0	0	0	0	0	0	1	0	0	0	0
HANNAH MORE CENTER BALTIMORE COUNTY	135	0	0	0	0	61	0	7	4	22	0	2	39	0
HANNAH MORE- SEVERN RIVER	7	0	0	0	0	1	0	0	0	2	0	0	4	0
HARBOR SCHOOL, BALTIMORE	87	2	0	2	0	8	0	6	22	27	0	1	19	0
HARBOUR SCHOOL ANNE ARUNDEL	144	1	0	0	2	12	1	17	22	58	0	1	30	0
HATTIE SAMS LEARNING CTR	6	0	0	0	0	6	0	0	0	0	0	0	0	0
HEAD START HOWARD	2	0	0	0	2	0	0	0	0	0	0	0	0	0
HIGH ROAD ACADEMY DELAWARE	25	0	0	0	1	0	15	0	5	3	0	0	1	0
HIGH ROAD BALTIMORE COUNTY	122	3	0	0	0	66	1	14	23	10	0	0	5	0
HIGH ROAD - CECIL COUNTY	1	0	0	0	0	1	0	0	0	0	0	0	0	0
HIGH ROAD - LAPLATA	23	2	0	0	0	19	0	0	0	2	0	0	0	0
HIGH ROAD ACADEMY HOWARD COUNTY	121	0	0	0	5	91	0	2	15	6	0	0	2	0
HIGH ROAD ACADEMY PG COUNTY	127	0	0	0	0	74	0	4	15	32	0	0	2	0
HILLHAVEN	2	1	0	0	0	0	0	0	0	0	0	0	1	0
IVYMOUNT SCHOOLONPUBLIC	108	3	0	0	2	0	0	5	1	49	0	1	47	0
JEFFERSON SCHOOL ALLEGANY	27	1	0	0	0	13	0	2	0	11	0	0	0	0
JEFFERSON SCHOOL CARROLL	15	0	0	0	0	12	0	1	0	1	0	0	1	0
JEFFERSON SCHOOL FREDERICK	68	0	0	0	0	61	0	2	0	4	0	0	1	0
JFK INSTITUTE	232	14	1	0	6	39	7	20	8	51	0	22	64	0
KATHLEEN THOMAS TLC	11	0	0	0	1	0	0	3	3	2	0	0	2	0
KENNEDY KRIEGER AA CO	2	0	0	0	0	1	0	0	0	1	0	0	0	0
KENNEDY KRIEGER BALTIMORE CITY	133	2	0	0	0	20	0	2	3	43	0	6	57	0
KINGBURY DAY SCHOOL	19	0	0	0	0	0	0	2	8	9	0	0	0	0
KOBA INSTITUTE (FOCUS POINT)	22	1	0	0	0	14	0	1	1	5	0	0	0	0
LAB SCHOOL BALTIMORE	2	0	0	0	0	0	0	0	2	0	0	0	0	0
LAB SCHOOL DC	46	0	0	0	2	1	0	6	31	5	0	1	0	0
LAKE GROVE CT	1	0	0	0	0	1	0	0	0	0	0	0	0	0
LANDMARK	1	0	0	0	0	0	0	0	1	0	0	0	0	0
LAUREL HALL	67	0	0	0	0	47	0	6	4	8	0	0	2	0
LEARNING TREE	4	1	0	0	0	0	0	0	0	2	0	0	1	0
LEARY OF PG COUNTY	23	0	0	0	0	16	0	0	0	7	0	0	0	0
LEARY SCHOOL VA	23	1	0	0	0	15	0	0	0	7	0	0	0	0
LIBERTY CHRISTIAN	1	0	0	0	0	0	0	0	1	0	0	0	0	0
LINWOOD	24	0	0	0	0	2	0	0	0	3	0	0	19	0
LODGE SCHOOL	38	0	0	0	0	32	0	2	0	2	0	0	2	0
MAPLE SHADE	7	0	0	0	0	6	0	0	0	1	0	0	0	0
MARGARET S STERK	2	0	1	1	0	0	0	0	0	0	0	0	0	0
MPAC	76	0	0	0	0	0	0	1	0	0	0	0	20	55
NATIONAL CHILDREN'S CTR.	49	8	0	0	0	4	0	0	0	21	0	0	16	0
NEW DIRECTION	2	0	0	0	0	2	0	0	0	0	0	0	0	0
NEW FOUNDATION	34	3	0	0	0	30	0	1	0	0	0	0	0	0
NORBEL BALTIMORE CITY	7	0	0	0	0	3	0	0	2	1	0	0	1	0
OAKMONT	32	0	0	0	0	28	0	3	0	0	0	1	0	0
OVERLOOK HEADSTART	1	0	0	0	1	0	0	0	0	0	0	0	0	0

\*\*This Table includes Eligibility 1 and 2 students

Table 30 (continued)  
 Number of Students in Nonpublic Schools by Disability  
 October 29, 2004

NONPUBLIC SCHOOL	TOTAL	Mental Retardation	Hard of Hearing	Deaf	Speech/ Language	Visually Impaired	Emotionally Disturbed	Orthopedically Impaired	Other Health Impaired	Specific Learning Disabilities	Multiple Disabilities	Deaf/ Blind	Traumatic Brain Injury	Autism	Developmental Delay
PATHWAYS - HYATTSVILLE	43	0	0	0	0	0	34	0	1	1	6	0	0	1	0
PATHWAYS CTR.	73	0	0	0	0	0	57	0	0	1	14	0	0	1	0
PHILLIPS HOWARD	80	1	0	0	0	0	46	0	1	3	25	0	0	4	0
PHILLIPS VA	74	4	0	0	1	0	35	0	5	3	19	0	0	7	0
PINES TREATMENT CTR.	15	3	0	0	0	0	12	0	0	0	0	0	0	0	0
POTOMAC RIDGE	62	0	0	0	0	0	53	0	1	0	8	0	0	0	0
PRESCHOOL	19	0	0	0	16	0	0	1	0	1	1	0	0	0	0
RADCLIFFE CREEK SCHOOL	1	0	0	0	0	0	0	0	0	1	0	0	0	0	0
REGINALD LOURIE	4	0	0	0	0	0	2	0	1	0	0	0	0	1	0
REGIONAL CTR.FOR INFANTS& CHILDREN	9	0	0	0	0	0	4	0	0	1	2	0	0	2	0
RICA BALTIMORE	92	1	0	0	0	0	83	0	1	3	4	0	0	0	0
RIDGE SCHOOL	11	0	0	0	0	0	8	1	1	0	1	0	0	0	0
SAINT JOHN SCHOOL	2	0	0	0	1	0	0	0	0	0	0	0	0	1	0
SALEM CHILDREN'S TRUST	14	1	0	0	0	0	8	0	2	0	3	0	0	0	0
SHOREHAVEN	17	3	0	0	0	0	0	1	0	0	12	0	0	1	0
ST.COLETTA SCHOOL	43	9	0	0	1	0	0	0	1	0	11	0	0	21	0
ST.ELIZABETHS SCHOOL&HAB.	125	31	1	0	4	0	33	5	6	5	20	0	2	18	0
ST.JOHN'S CHILD DEV.CTR.,	3	0	0	0	0	0	0	0	0	0	2	0	0	1	0
STONEBRIDGE ACADEMY	1	0	0	0	0	0	0	0	1	0	0	0	0	0	0
STRAWBRIDGE SCHOOL	40	1	0	0	0	0	37	0	0	1	1	0	0	0	0
SUMMITT SCHOOL	13	1	0	0	0	0	0	0	0	3	9	0	0	0	0
TAYLOR MANOR HOSPITAL	3	0	0	0	0	0	3	0	0	0	0	0	0	0	0
TRINITY	1	0	0	0	1	0	0	0	0	0	0	0	0	0	0
UCP	51	15	0	0	0	0	0	25	0	0	11	0	0	0	0
VALLEY ACADEMY	2	0	0	0	0	0	0	0	0	2	0	0	0	0	0
VILLA MARIA AT ST VINCENT	1	0	0	0	0	0	1	0	0	0	0	0	0	0	0
VILLA MARIA BALTIMORE COUNTY	161	0	0	0	1	0	145	0	5	1	8	0	0	1	0
VILLA MARIA/SEATON KEOUGH	10	0	0	0	0	0	8	0	0	0	2	0	0	0	0
WOODBURNE	12	0	0	0	1	0	11	0	0	0	0	0	0	0	0
WOODS SCHOOL	3	1	0	0	0	0	0	0	0	0	2	0	0	0	0
YOUTH IN TRANSITION BALTIMORE CITY	47	7	0	1	0	0	35	0	1	1	1	0	0	1	0
YOUTH IN TRANSITION SCHOOL BALTIMORE CO	2	1	0	0	0	0	0	0	0	0	1	0	0	0	0

\*\*This Table includes Eligibility 1 and 2 students

# MARYLAND SPECIAL EDUCATION EXIT DATA

JULY 1, 2003 - JUNE 30, 2004

Table 31  
 Students with Disabilities by Exit Reason and LEA  
 Ages 14 - 21  
 July 2003 - June 2004

	Total	Returned to General Ed		Graduated				Reached Maximum Age		Deceased		Transferred				Dropped Out	
				with Diploma		with Certificate						Continuing Special Ed		Not Continuing Sp Ed			
				Number	Percent	Number	Percent					Number	Percent	Number	Percent		
STATE TOTAL	10,664	1,376	12.9%	4,110	38.5%	618	5.8%	109	1.0%	33	0.3%	2,286	21.4%	509	4.8%	1,623	15.2%
Allegany	147	22	15.0%	62	42.2%	11	7.5%	0	0.0%	1	0.7%	23	15.6%	1	0.7%	27	18.4%
Anne Arundel	1,096	102	9.3%	454	41.4%	60	5.5%	14	1.3%	2	0.2%	216	19.7%	21	1.9%	227	20.7%
Baltimore City	1,826	235	12.9%	293	16.0%	137	7.5%	21	1.2%	7	0.4%	400	21.9%	118	6.5%	615	33.7%
Baltimore	1,353	173	12.8%	562	41.5%	56	4.1%	0	0.0%	5	0.4%	407	30.1%	0	0.0%	150	11.1%
Calvert	240	45	18.8%	89	37.1%	4	1.7%	2	0.8%	0	0.0%	58	24.2%	3	1.3%	39	16.3%
Caroline	75	28	37.3%	19	25.3%	2	2.7%	0	0.0%	0	0.0%	13	17.3%	3	4.0%	10	13.3%
Carroll	296	45	15.2%	161	54.4%	20	6.8%	2	0.7%	1	0.3%	26	8.8%	0	0.0%	41	13.9%
Cecil	280	23	8.2%	89	31.8%	20	7.1%	5	1.8%	0	0.0%	49	17.5%	25	8.9%	69	24.6%
Charles	303	97	32.0%	87	28.7%	2	0.7%	4	1.3%	0	0.0%	78	25.7%	0	0.0%	35	11.6%
Dorchester	54	15	27.8%	6	11.1%	2	3.7%	0	0.0%	0	0.0%	17	31.5%	6	11.1%	8	14.8%
Frederick	385	72	18.7%	169	43.9%	12	3.1%	0	0.0%	2	0.5%	20	5.2%	72	18.7%	38	9.9%
Garrett	64	2	3.1%	29	45.3%	4	6.3%	0	0.0%	0	0.0%	12	18.8%	3	4.7%	14	21.9%
Harford	455	102	22.4%	193	42.4%	24	5.3%	1	0.2%	0	0.0%	49	10.8%	21	4.6%	65	14.3%
Howard	424	26	6.1%	246	58.0%	14	3.3%	4	0.9%	2	0.5%	105	24.8%	0	0.0%	27	6.4%
Kent	25	5	20.0%	10	40.0%	0	0.0%	0	0.0%	0	0.0%	6	24.0%	0	0.0%	4	16.0%
Montgomery	1,382	187	13.5%	738	53.4%	96	6.9%	12	0.9%	1	0.1%	259	18.7%	69	5.0%	20	1.4%
Prince George's	1,093	58	5.3%	536	49.0%	51	4.7%	0	0.0%	7	0.6%	280	25.6%	42	3.8%	119	10.9%
Queen Anne's	100	13	13.0%	44	44.0%	3	3.0%	0	0.0%	1	1.0%	19	19.0%	5	5.0%	15	15.0%
St. Mary's	201	20	10.0%	74	36.8%	10	5.0%	0	0.0%	0	0.0%	58	28.9%	0	0.0%	39	19.4%
Somerset	37	1	2.7%	15	40.5%	5	13.5%	1	2.7%	0	0.0%	8	21.6%	1	2.7%	6	16.2%
Talbot	48	5	10.4%	17	35.4%	8	16.7%	1	2.1%	0	0.0%	11	22.9%	0	0.0%	6	12.5%
Washington	191	61	31.9%	88	46.1%	26	13.6%	0	0.0%	0	0.0%	5	2.6%	2	1.0%	9	4.7%
Wicomico	179	22	12.3%	54	30.2%	25	14.0%	0	0.0%	1	0.6%	49	27.4%	5	2.8%	23	12.8%
Worcester	89	5	5.6%	46	51.7%	5	5.6%	0	0.0%	1	1.1%	22	24.7%	2	2.2%	8	9.0%
LEA TOTAL	10,343	1,364	13.2%	4,081	39.5%	597	5.8%	67	0.6%	31	0.3%	2,190	21.2%	399	29.3%	1,614	15.6%
Adult Corrections	87	3	3.4%	8	9.2%	1	1.1%	35	40.2%	1	1.1%	8	9.2%	25	28.7%	6	6.9%
Department of Juvenile Services	158	1	0.6%	1	0.6%	1	0.6%	0	0.0%	0	0.0%	70	44.3%	85	53.8%	0	0.0%
MSB	28	7	25.0%	0	0.0%	19	67.9%	0	0.0%	1	3.6%	1	3.6%	0	0.0%	0	0.0%
MSD	48	1	2.1%	20	41.7%	0	0.0%	7	14.6%	0	0.0%	17	35.4%	0	0.0%	3	6.3%
SOP TOTAL	321	12	3.7%	29	9.0%	21	6.5%	42	13.1%	2	0.6%	96	29.9%	110	34.3%	9	2.8%

\*\*This Table includes Eligibility 1 and 2 students

Figure 6  
Students with Disabilities  
by Exit Reason  
July 2003-June 2004

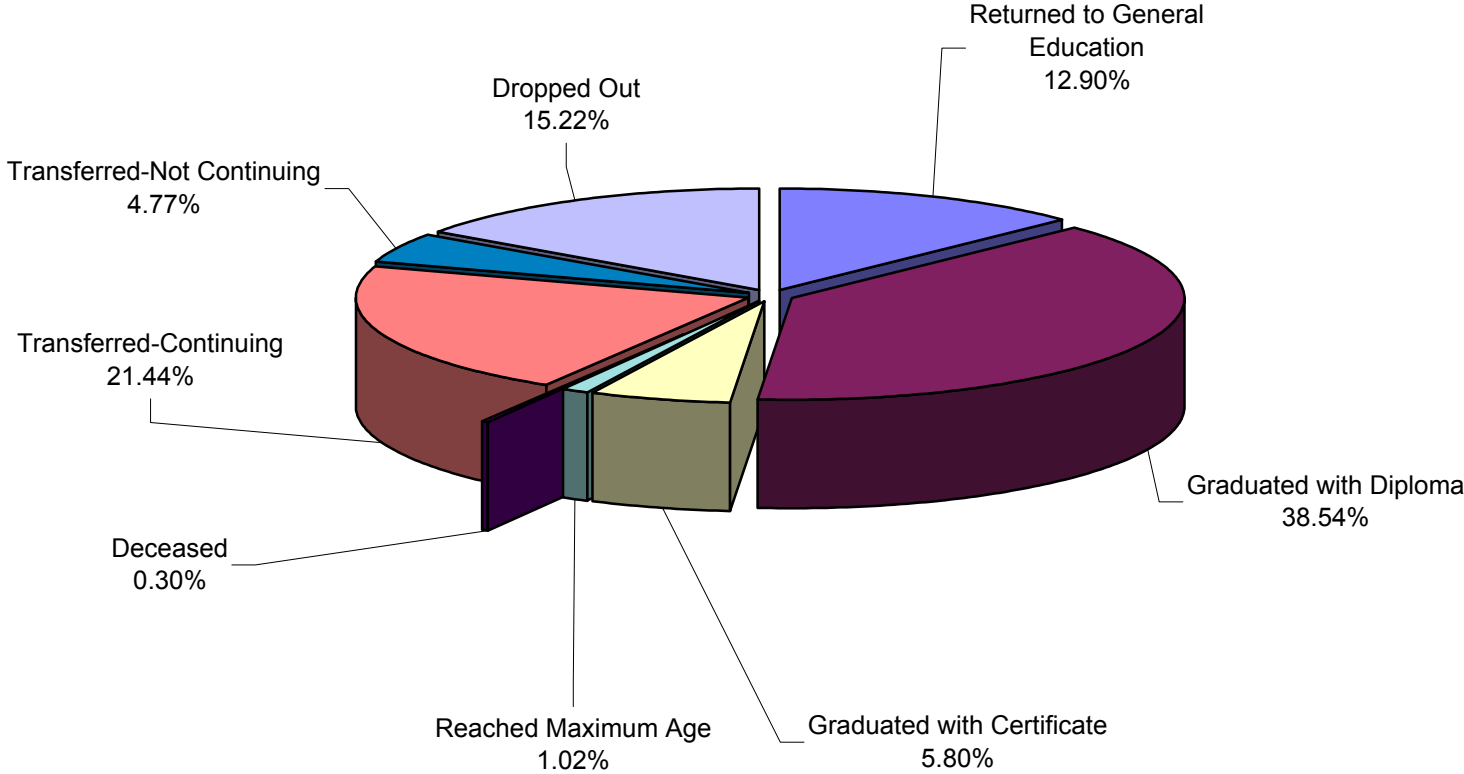




Table 32

Students with Disabilities by Exit Reason and LEA  
Ages 14 - 21  
Percent Difference From 2003 - 2004

	Total		Returned to General Ed Percent Difference			Graduated						Transferred						Dropped Out Percent								
						with Diploma			with Certificate			Reached Maximum Age			Deceased						Continuing Special Ed			Not Continuing Special Ed		
						2003	2004	Percent Difference	2003	2004	Percent Difference	2003	2004	Percent Difference	2003	2004	Percent Difference				2003	2004	Percent Difference	2003	2004	Percent Difference
STATE TOTAL	10,043	10,664	1,375	1,376	0.1%	3,676	4,109	11.8%	521	618	18.6%	140	109	-22.14%	39	33	-15.38%	2,217	2,286	3.11%	452	509	12.61%	1,623	1,623	0.00%
Allegany	178	147	18	22	22.2%	62	62	0.0%	10	11	10.0%	6	0	-100.0%	2	1	-50.0%	25	23	-8.0%	10	1	-90.0%	45	27	-40.0%
Anne Arundel	1,220	1,096	110	102	-7.3%	502	454	-9.6%	36	60	66.7%	33	14	-57.6%	6	2	-66.7%	302	216	-28.5%	6	21	250.0%	225	227	0.9%
Baltimore City	1,948	1,826	278	235	-15.5%	255	293	14.9%	119	137	15.1%	23	21	-8.7%	13	7	-46.2%	396	400	1.0%	161	118	-26.7%	703	615	-12.5%
Baltimore	1,300	1,353	199	173	-13.1%	626	562	-10.2%	36	56	55.6%	0	0	0.0%	3	5	66.7%	320	407	27.2%	0	0	0.0%	116	150	29.3%
Calvert	220	240	34	45	32.4%	95	89	-6.3%	4	4	0.0%	0	2	0.0%	2	0	-100.0%	50	58	16.0%	3	3	0.0%	32	39	21.9%
Caroline	63	75	4	28	600.0%	25	19	-24.0%	6	2	-66.7%	2	0	-100.0%	0	0	0.0%	14	13	-7.1%	1	3	200.0%	11	10	-9.1%
Carroll	285	296	44	45	2.3%	171	161	-5.8%	18	20	11.1%	3	2	-33.3%	0	1	0.0%	17	26	52.9%	3	0	-100.0%	29	41	41.4%
Cecil	222	280	10	23	130.0%	65	89	36.9%	19	20	5.3%	7	5	-28.6%	1	0	-100.0%	61	49	-19.7%	10	25	150.0%	49	69	40.8%
Charles	369	303	129	97	-24.8%	91	87	-4.4%	5	2	-60.0%	5	4	-20.0%	0	0	0.0%	95	78	-17.9%	0	0	0.0%	44	35	-20.5%
Dorchester	50	54	6	15	150.0%	15	6	-60.0%	4	2	-50.0%	0	0	0.0%	0	0	0.0%	10	17	70.0%	6	6	0.0%	9	8	-11.1%
Frederick	392	385	85	72	-15.3%	181	169	-6.6%	14	12	-14.3%	0	0	0.0%	1	2	100.0%	56	20	-64.3%	18	72	300.0%	37	38	2.7%
Garrett	81	64	9	2	-77.8%	17	29	70.6%	6	4	-33.3%	0	0	0.0%	1	0	-100.0%	30	12	-60.0%	2	3	50.0%	16	14	-12.5%
Harford	442	455	83	102	22.9%	220	193	-12.3%	22	24	9.1%	6	1	-83.3%	1	0	-100.0%	41	49	19.5%	12	21	75.0%	57	65	14.0%
Howard	460	424	36	26	-27.8%	231	246	6.5%	15	14	-6.7%	8	4	-50.0%	2	2	0.0%	142	105	-26.1%	2	0	-100.0%	24	27	12.5%
Kent	34	25	2	5	150.0%	17	10	-41.2%	2	0	-100.0%	0	0	0.0%	0	0	0.0%	5	6	20.0%	0	0	0.0%	8	4	-50.0%
Montgomery	1,225	1,382	193	187	-3.1%	594	738	24.2%	70	96	37.1%	12	12	0.0%	0	1	0.0%	250	259	3.6%	76	69	-9.2%	30	20	-33.3%
Prince George's	524	1,093	15	58	286.7%	126	536	325.4%	61	51	-16.4%	1	0	-100.0%	3	7	133.3%	194	280	44.3%	36	42	16.7%	88	119	35.2%
Queen Anne's	35	100	2	13	550.0%	28	44	57.1%	4	3	-25.0%	0	0	0.0%	0	1	0.0%	1	19	1800.0%	0	5	0.0%	0	15	0.0%
St. Mary's	181	201	19	20	5.3%	77	74	-3.9%	10	10	0.0%	0	0	0.0%	0	0	0.0%	46	58	26.1%	0	0	0.0%	29	39	34.5%
Somerset	48	37	7	1	-85.7%	14	15	7.1%	7	5	-28.6%	0	1	0.0%	0	0	0.0%	18	8	-55.6%	0	1	0.0%	2	6	200.0%
Talbot	62	48	15	5	-66.7%	9	17	88.9%	7	8	14.3%	3	1	-66.7%	0	0	0.0%	9	11	22.2%	2	0	-100.0%	17	6	-64.7%
Washington	170	191	35	61	74.3%	102	88	-13.7%	21	26	23.8%	1	0	-100.0%	0	0	0.0%	1	5	400.0%	4	2	-50.0%	6	9	50.0%
Wicomico	181	179	11	22	100.0%	74	54	-27.0%	5	25	400.0%	13	0	-100.0%	2	1	-50.0%	43	49	14.0%	2	5	150.0%	31	23	-25.8%
Worcester	100	89	16	5	-68.8%	52	46	-11.5%	6	5	-16.7%	0	0	0.0%	1	1	0.0%	18	22	22.2%	0	2	0.0%	7	8	14.3%
LEA TOTAL	9,790	10,343	1,360	1,364	0.3%	3,649	4,080	11.8%	507	597	17.8%	123	67	-45.5%	38	31	-18.4%	2,144	2,190	2.1%	354	399	12.7%	1,615	1,614	-0.1%
Adult Corrections	49	87	1	3	200.0%	1	8	700.0%	0	1	0.0%	17	35	105.9%	0	1	0.0%	10	8	-20.0%	14	25	78.6%	6	6	0.0%
DJS	149	158	10	1	-90.0%	4	1	-75.0%	0	1	0.0%	0	0	0.0%	0	0	0.0%	50	70	40.0%	84	85	1.2%	1	0	-100.0%
MSB	24	28	4	7	75.0%	4	0	-100.0%	14	19	35.7%	0	0	0.0%	1	1	0.0%	1	1	0.0%	0	0	0.0%	0	0	0.0%
MSD	31	48	0	1	0.0%	18	20	11.1%	0	0	0.0%	0	7	0.0%	0	0	0.0%	12	17	41.7%	0	0	0.0%	1	3	200.0%
SOP TOTAL	253	321	15	12	-20.0%	27	29	7.4%	14	21	50.0%	17	42	147.1%	1	2	100.0%	73	96	31.5%	98	110	12.2%	8	9	12.5%

\*\*This Table includes Eligibility 1 and 2 students

Table 33

Students with Disabilities by Exit Reason and Disability  
 Ages 14 - 21  
 July 2003 - June 2004

	Total	Returned to General Ed		Graduated				Reached Maximum Age		Deceased		Transferred				Dropped Out	
				with Diploma		with Certificate						Continuing Sp Ed		Not Continuing			
		Number	Percent	Number	Percent	Number	Percent	Number	Percent	Number	Percent	Number	Percent	Number	Percent	Number	Percent
State Total	10,664	1,376	12.90%	4,110	38.54%	618	5.80%	109	1.02%	33	0.31%	2,286	21.44%	509	4.77%	1,623	15.22%
Mentally Retarded	741	15	15.92%	118	15.92%	248	33.47%	37	4.99%	2	0.27%	175	23.62%	37	4.99%	109	14.71%
Hearing Impaired	61	5	60.66%	37	60.66%	0	0.00%	1	1.64%	0	0.00%	13	21.31%	1	1.64%	4	6.56%
Deaf	71	3	43.66%	31	43.66%	3	4.23%	7	9.86%	0	0.00%	21	29.58%	0	0.00%	6	8.45%
Speech/Language	662	216	39.73%	263	39.73%	10	1.51%	0	0.00%	1	0.15%	98	14.80%	23	3.47%	51	7.70%
Visually Impaired	58	8	41.38%	24	41.38%	17	29.31%	0	0.00%	1	1.72%	5	8.62%	1	1.72%	2	3.45%
Emotionally Disturbed	1,847	173	24.69%	456	24.69%	65	3.52%	16	0.87%	4	0.22%	541	29.29%	143	7.74%	449	24.31%
Orthopedically Impaired	31	2	67.74%	21	67.74%	3	9.68%	2	6.45%	0	0.00%	2	6.45%	0	0.00%	1	3.23%
Other Health Impaired	901	109	45.73%	412	45.73%	14	1.55%	1	0.11%	6	0.67%	199	22.09%	47	5.22%	113	12.54%
Specific Learning Disability	5,637	826	44.60%	2,514	44.60%	97	1.72%	25	0.44%	9	0.16%	1,109	19.67%	238	4.22%	819	14.53%
Deaf/Blind	4	0	25.00%	1	25.00%	3	75.00%	0	0.00%	0	0.00%	0	0.00%	0	0.00%	0	0.00%
Multiple Handicap	469	14	34.12%	160	34.12%	107	22.81%	13	2.77%	10	2.13%	93	19.83%	15	3.20%	57	12.15%
Autism	131	3	42.75%	56	42.75%	45	34.35%	6	4.58%	0	0.00%	17	12.98%	1	0.76%	3	2.29%
Traumatic Brain Injury	51	2	33.33%	17	33.33%	6	11.76%	1	1.96%	0	0.00%	13	25.49%	3	5.88%	9	17.65%
Developmental Delay	0	0	0.00%	0	0.00%	0	0.00%	0	0.00%	0	0.00%	0	0.00%	0	0.00%	0	0.00%

\*\*This Table includes Eligibility 1 and 2 students

Table 34

Students with Disabilities by Exit Reason and LRE  
 Ages 14 - 21  
 July 2003 - June 2004

	Total	Returned to General Ed		Graduated				Reached Maximum Age		Deceased		Transferred				Dropped Out	
				with Diploma		with Certificate						Continuing Sp Ed		Not Continuing			
		Number	Percent	Number	Percent	Number	Percent	Number	Percent	Number	Percent	Number	Percent	Number	Percent		
State Total	10,042	1,319	13.13%	3,968	39.51%	493	4.91%	102	1.02%	26	0.26%	2,158	21.49%	482	4.80%	1,494	14.88%
Out < 21%	5,743	1046	18.21%	2,616	45.55%	67	1.17%	19	0.33%	9	0.16%	1,024	17.83%	259	4.51%	703	12.24%
Out 21 - 60%	2,477	192	7.75%	948	38.27%	105	4.24%	34	1.37%	4	0.16%	561	22.65%	116	4.68%	517	20.87%
Out > 60%	1,371	65	4.74%	330	24.07%	169	12.33%	37	2.70%	7	0.51%	463	33.77%	85	6.20%	215	15.68%
Public Day	451	16	3.55%	74	16.41%	152	33.70%	12	2.66%	6	1.33%	110	24.39%	22	4.88%	59	13.08%

*\*\*This Table includes Eligibility 1 and 2 students*

# **Maryland Students with Disabilities Suspension Data**

Table 35  
 Extended Suspensions: Number and Percentage of Suspensions  
 Maryland Public Schools  
 2003-2004

	Number and Percentage of All Students Suspended			Number and Percentage of Students with Disabilities Suspended			Number and Percentage of Non-disabled Students Suspended		
	Total 9/30/2003 Enrollment	Suspended for More Than 10 Days	Percent	10/31/2003 SSIS Count*	Suspended for More Than 10 Days	Percent	Total	Suspended for More Than 10 Days	Percent
Total State	869,113	5,516	0.63%	112,859	1,339	1.19%	756,254	4,178	0.55%
Allegany	9,926	5	0.05%	1,648	1	0.06%	8,278	4	0.05%
Anne Arundel	74,508	326	0.44%	10,512	95	0.90%	63,996	231	0.36%
Baltimore City	91,738	2,188	2.39%	15,313	693	4.53%	76,425	1,495	1.96%
Edison Schools	2,311	2	0.09%	216	0	0.00%	2,095	2	0.10%
Baltimore	108,523	845	0.78%	14,005	98	0.70%	94,518	747	0.79%
Calvert	17,423	8	0.05%	2,373	0	0.00%	15,050	8	0.05%
Caroline	5,400	1	0.02%	709	1	0.14%	4,691	0	0.00%
Carroll	28,832	90	0.31%	3,701	23	0.62%	25,131	67	0.27%
Cecil	16,475	76	0.46%	2,554	9	0.35%	13,921	67	0.48%
Charles	25,610	124	0.48%	2,489	18	0.72%	23,121	106	0.46%
Dorchester	4,803	53	1.10%	570	11	1.93%	4,233	42	0.99%
Frederick	38,950	0	0.00%	4,762	0	0.00%	34,188	0	0.00%
Garrett	4,810	1	0.02%	731	0	0.00%	4,079	1	0.02%
Harford	40,200	333	0.83%	6,103	104	1.70%	34,097	230	0.67%
Howard	47,833	123	0.26%	5,070	25	0.49%	42,763	98	0.23%
Kent	2,565	2	0.08%	339	0	0.00%	2,226	2	0.09%
Montgomery	139,201	244	0.18%	17,334	59	0.34%	121,867	185	0.15%
Prince George's	137,285	1,057	0.77%	15,098	196	1.30%	122,187	861	0.70%
Queen Anne's	7,526	15	0.20%	1,037	3	0.29%	6,489	12	0.18%
St. Mary's	16,261	7	0.04%	2,222	0	0.00%	14,039	7	0.05%
Somerset	2,951	1	0.03%	359	0	0.00%	2,592	1	0.04%
Talbot	4,459	13	0.29%	458	3	0.66%	4,001	10	0.25%
Washington	20,338	0	0.00%	2,780	0	0.00%	17,558	0	0.00%
Wicomico	14,402	2	0.01%	1,711	0	0.00%	12,691	2	0.02%
Worcester	6,783	0	0.00%	765	0	0.00%	6,018	0	0.00%

\* For more information see publication 'Suspension, Expulsions and Health Related Exclusions Maryland Public Schools' on the MSDE web site

\*\*This Table includes Eligibility 1 and 2 students

Table 36  
Multiple Suspensions - Summing to Greater than Ten Days  
Maryland Public Schools  
2003-2004

	**Number and Percentage of All Students Suspended			Number and Percentage of Students with Disabilities Suspended			Number and Percentage of Non-disabled Students Suspended		
	Total 9/30/2003 Enrollment	Suspended for More Than 10 Days	Percent	10/31/2003 SSIS Count*	Suspended for More Than 10 Days	Percent	Total	Suspended for More Than 10 Days	Percent
Total State	869,113	7,503	0.86%	112,859	1,525	1.35%	756,254	5,950	0.79%
Allegany	9,926	66	0.66%	1,648	18	1.09%	8,278	48	0.58%
Anne Arundel	74,508	529	0.71%	10,512	86	0.82%	63,996	443	0.69%
Baltimore City	91,738	1,323	1.44%	15,313	287	1.87%	76,425	1,036	1.36%
Edison Schools	2,311	4	0.17%	216	2	0.93%	2,095	2	0.10%
Baltimore	108,523	803	0.74%	14,005	117	0.84%	94,518	686	0.73%
Calvert	17,423	151	0.87%	2,373	47	1.98%	15,050	104	0.69%
Caroline	5,400	48	0.89%	709	13	1.83%	4,691	35	0.75%
Carroll	28,832	73	0.25%	3,701	23	0.62%	25,131	49	0.19%
Cecil	16,475	303	1.84%	2,554	13	0.51%	13,921	287	2.06%
Charles	25,610	257	1.00%	2,489	35	1.41%	23,121	222	0.96%
Dorchester	4,803	131	2.73%	570	37	6.49%	4,233	94	2.22%
Frederick	38,950	261	0.67%	4,762	54	1.13%	34,188	206	0.60%
Garrett	4,810	6	0.12%	731	2	0.27%	4,079	4	0.10%
Harford	40,200	631	1.57%	6,103	186	3.05%	34,097	436	1.28%
Howard	47,833	126	0.26%	5,070	17	0.34%	42,763	109	0.25%
Kent	2,565	53	2.07%	339	9	2.65%	2,226	43	1.93%
Montgomery	139,201	433	0.31%	17,334	134	0.77%	121,867	286	0.23%
Prince George's	137,285	1,558	1.13%	15,098	297	1.97%	122,187	1,261	1.03%
Queen Anne's	7,526	55	0.73%	1,037	11	1.06%	6,489	44	0.68%
St. Mary's	16,261	239	1.47%	2,222	37	1.67%	14,039	202	1.44%
Somerset	2,951	21	0.71%	359	3	0.84%	2,592	18	0.69%
Talbot	4,459	26	0.58%	458	8	1.75%	4,001	18	0.45%
Washington	20,338	15	0.07%	2,780	1	0.04%	17,558	14	0.08%
Wicomico	14,402	332	2.31%	1,711	73	4.27%	12,691	259	2.04%
Worcester	6,783	59	0.87%	765	15	1.96%	6,018	44	0.73%

\*\*For more information see publication 'Suspension, Expulsions and Health Related Exclusions Maryland Public Schools' on the MSDE web site

\*\*Disabled and non-disabled counts do not equal total students because students could have been counted in both columns, depending on their special ed status when suspended.

\*\*\*This Table includes Eligibility 1 and 2 students

MARYLAND INFANTS AND TODDLERS PROGRAM  
PART C DATA  
as of 10/29/2004

Table 37  
 Part C Child Report  
 as of October 29, 2004

	Birth to One	One to Two	Two to Three	Total Snapshot (as of 10/29/04)	Total # of Children Receiving Early Intervention Services Annually	Total # of Children Referred to Local Infants & Toddlers Programs Annually
					Annual Count	Referral Count
					(from 10/29/03 to 10/29/04)	(from 10/29/03 to 10/29/04)
Total State	926	1,980	3,370	6,276	12,051	10,559
Allegany	18	31	40	89	170	149
Anne Arundel	54	156	353	563	1035	991
Baltimore City	166	316	414	896	1,549	1,457
Baltimore	101	244	515	860	1,757	1,551
Calvert	5	20	41	66	130	95
Caroline	10	9	17	36	67	74
Carroll	38	51	83	172	324	300
Cecil	18	36	41	95	164	169
Charles	31	65	44	140	257	191
Dorchester	12	13	26	51	100	59
Frederick	27	73	130	230	476	416
Garrett	1	7	2	10	33	51
Harford	41	100	147	288	608	537
Howard	44	97	183	324	640	610
Kent	1	2	0	3	8	12
Montgomery	185	410	729	1324	2,527	1,978
Prince George's	93	210	373	676	1,397	1,047
Queen Anne's	8	12	38	58	104	93
Somerset	0	8	4	12	20	48
St. Mary's	23	45	46	114	208	196
Talbot	9	12	20	41	71	80
Washington	25	33	59	117	217	237
Wicomico	14	23	52	89	151	168
Worcester	2	7	13	22	38	50