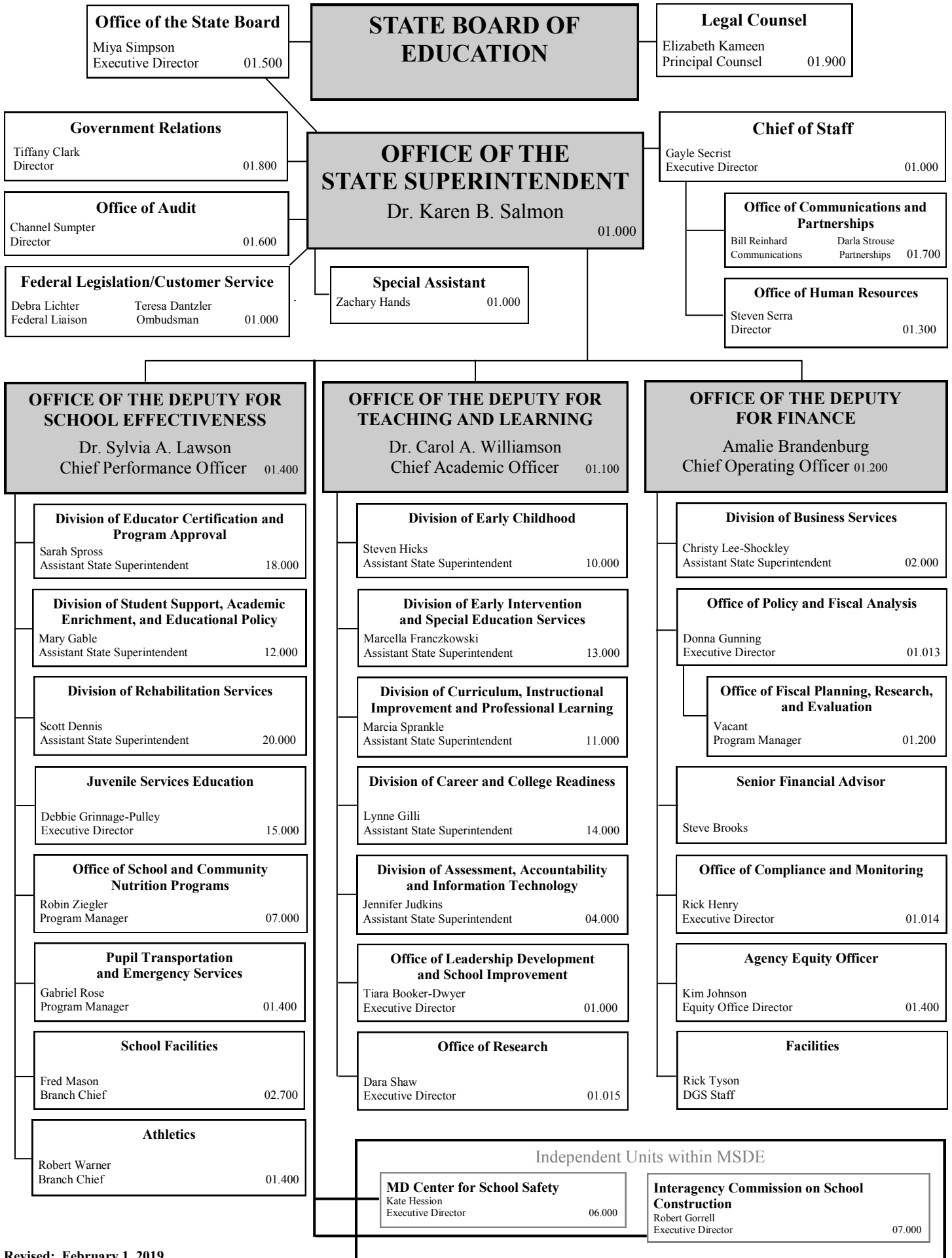


MARYLAND STATE DEPARTMENT OF EDUCATION



Office of the State Board
 Miya Simpson
 Executive Director 01.500

STATE BOARD OF EDUCATION

Legal Counsel
 Elizabeth Kameen
 Principal Counsel 01.900

Government Relations
 Tiffany Clark
 Director 01.800

OFFICE OF THE STATE SUPERINTENDENT
 Dr. Karen B. Salmon
 01.000

Chief of Staff
 Gayle Secrist
 Executive Director 01.000

Office of Audit
 Channel Sumpter
 Director 01.600

Office of Communications and Partnerships
 Bill Reinhard
 Communications 01.700
 Darla Strouse
 Partnerships

Federal Legislation/Customer Service
 Debra Lichter
 Federal Liaison
 Teresa Dantzer
 Ombudsman 01.000

Special Assistant
 Zachary Hands 01.000

Office of Human Resources
 Steven Serra
 Director 01.300

OFFICE OF THE DEPUTY FOR SCHOOL EFFECTIVENESS
 Dr. Sylvia A. Lawson
 Chief Performance Officer 01.400

OFFICE OF THE DEPUTY FOR TEACHING AND LEARNING
 Dr. Carol A. Williamson
 Chief Academic Officer 01.100

OFFICE OF THE DEPUTY FOR FINANCE
 Amalie Brandenburg
 Chief Operating Officer 01.200

Division of Educator Certification and Program Approval
 Sarah Spross
 Assistant State Superintendent 18.000

Division of Student Support, Academic Enrichment, and Educational Policy
 Mary Gable
 Assistant State Superintendent 12.000

Division of Rehabilitation Services
 Scott Dennis
 Assistant State Superintendent 20.000

Juvenile Services Education
 Debbie Grinnage-Pulley
 Executive Director 15.000

Office of School and Community Nutrition Programs
 Robin Ziegler
 Program Manager 07.000

Office of Pupil Transportation and Emergency Services
 Gabriel Rose
 Program Manager 01.400

School Facilities
 Fred Mason
 Branch Chief 02.700

Athletics
 Robert Warner
 Branch Chief 01.400

Division of Early Childhood
 Steven Hicks
 Assistant State Superintendent 10.000

Division of Early Intervention and Special Education Services
 Marcella Franczkowski
 Assistant State Superintendent 13.000

Division of Curriculum, Instructional Improvement and Professional Learning
 Marcia Sprankle
 Assistant State Superintendent 11.000

Division of Career and College Readiness
 Lynne Gilli
 Assistant State Superintendent 14.000

Division of Assessment, Accountability and Information Technology
 Jennifer Judkins
 Assistant State Superintendent 04.000

Office of Leadership Development and School Improvement
 Tiara Booker-Dwyer
 Executive Director 01.000

Office of Research
 Dara Shaw
 Executive Director 01.015

Division of Business Services
 Christy Lee-Shockley
 Assistant State Superintendent 02.000

Office of Policy and Fiscal Analysis
 Donna Gunning
 Executive Director 01.013

Office of Fiscal Planning, Research, and Evaluation
 Vacant
 Program Manager 01.200

Senior Financial Advisor
 Steve Brooks

Office of Compliance and Monitoring
 Rick Henry
 Executive Director 01.014

Agency Equity Officer
 Kim Johnson
 Equity Office Director 01.400

Facilities
 Rick Tyson
 DGS Staff

Independent Units within MSDE

MD Center for School Safety
 Kate Hession
 Executive Director 06.000

Interagency Commission on School Construction
 Robert Gorrell
 Executive Director 07.000