



May 2, 2019

SICC/LICC Joint Meeting

Welcome, Remarks & Introductions

Brenda Hussey-Gardner
Marcella Franczkowski



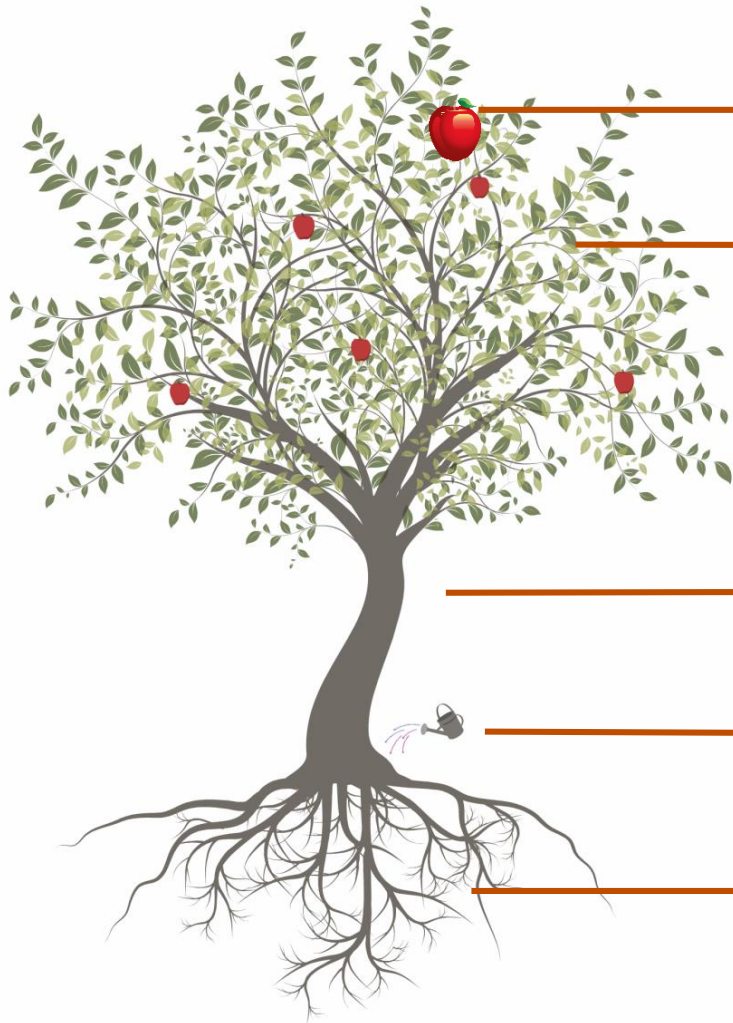
10:00
to
10:15

The SSIP & the SICC— Driving & Advising Forces for the Focus on Social Emotional Development

Pam Miller, Janette Guerra,
Brenda Hussey-Gardner &
Sarah Nativ

10:15
to
10:30

From Roots to Results



Results: *All children are active, successful participants in their homes, schools, & communities (as measured by the early childhood outcomes).*

Natural & Inclusive Learning Practices in the IFSP/IEP Process:

- **Development**
 - Authentic/Formative Assessment
 - Functional, Routines-Based IFSPs/Standards-Aligned IEPs
- **Implementation**
 - Routines-Based Intervention/Integrated Specially Designed Instruction
- **Evaluation**
 - Progress Monitoring/Formative Assessment

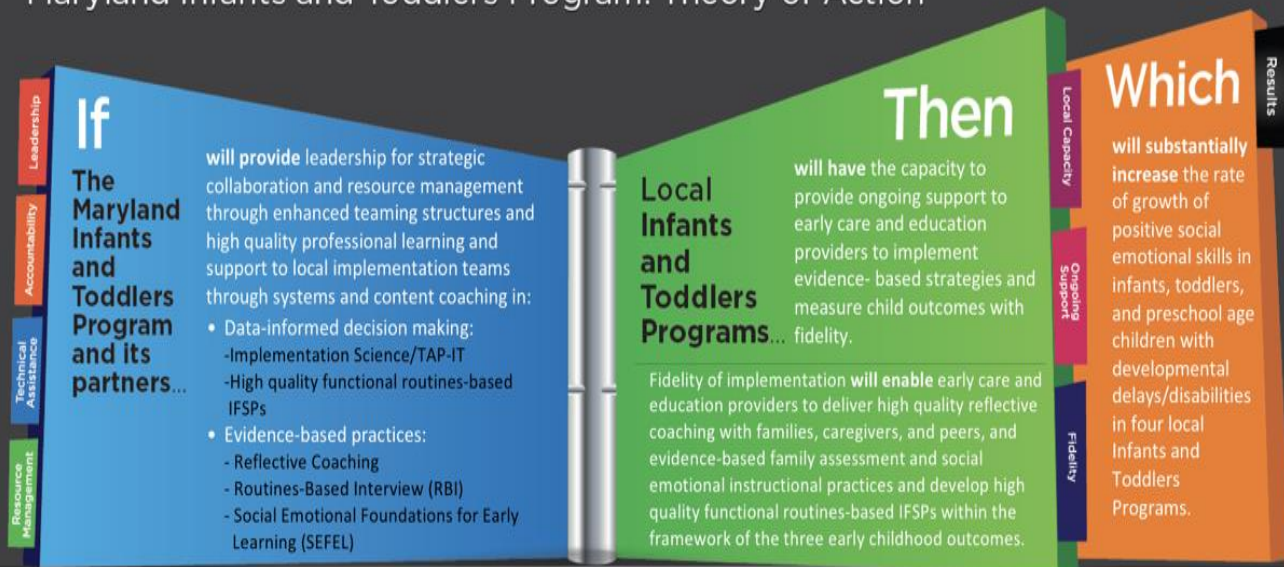
Teaming & Coaching Practices: Supporting colleagues & families through reflective practices

Leadership: Establishing conditions for successful implementation

Roots: All programs & personnel firmly grounded in Key Principles & DEC Recommended Practices

Maryland Part C State Systemic Improvement Plan

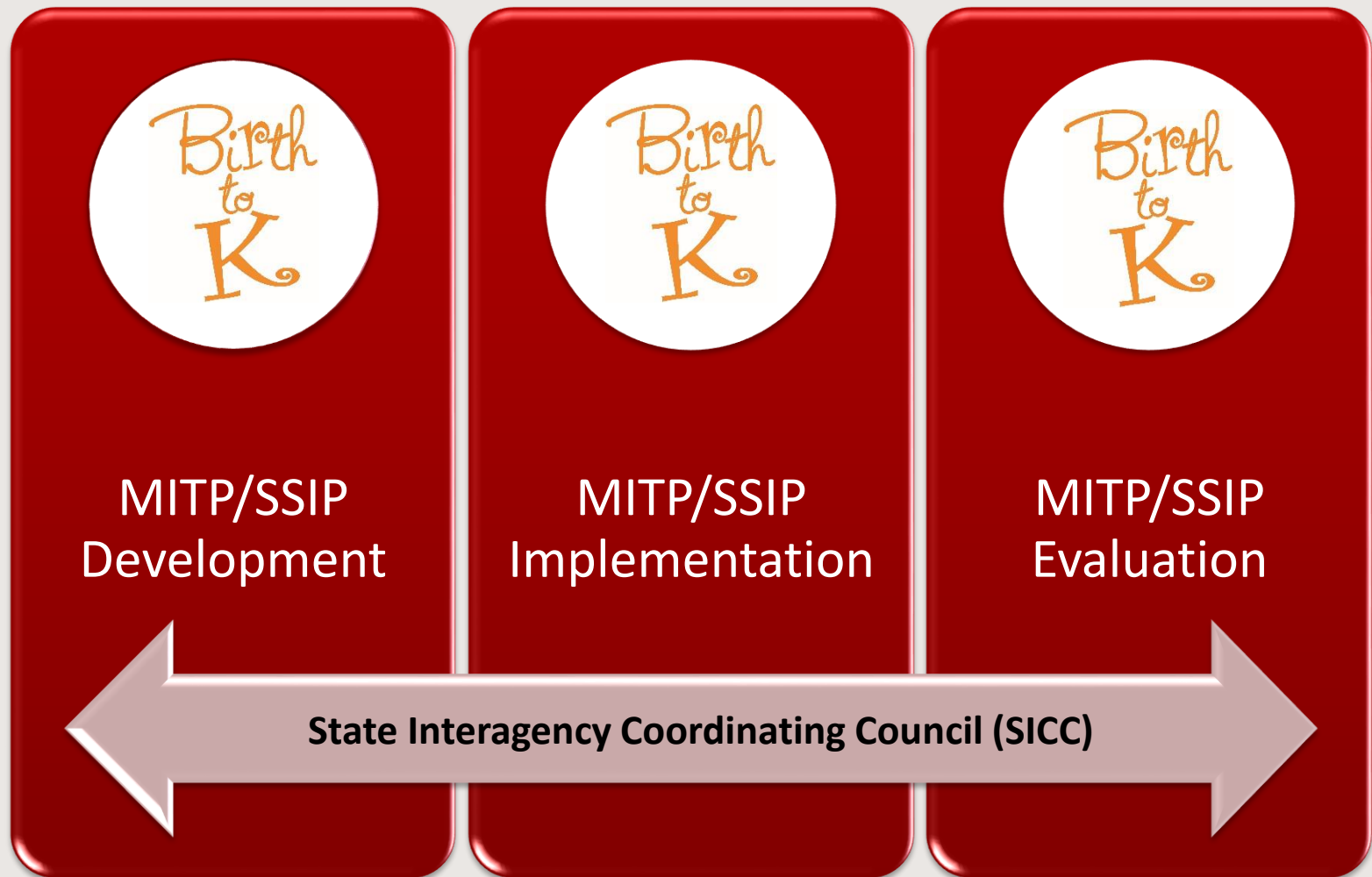
Maryland Infants and Toddlers Program: Theory of Action



OSEP Requirement (2014)

- Results Driven Accountability
- State Identified Measurable Result
- MD Focus on Child Outcome #1 – Positive social emotional skills & relationships
- Multistage plan for implementation with four LITPs
- Identification of evidence based practices

SSIP Driving, SICC Advising



Social Emotional Development & Wellness Panel

Maryland State Department of Education, Division of Early
Childhood: Cyndi Lessner, MSED

Maryland Department of Health, Maternal Infant and Early
Childhood Home Visiting: Mary LaCasse, MS

Maryland Chapter of the American Academy of Pediatrics:
Ken Tellerman, MD

University of Maryland School of Medicine, Department of
Psychiatry: Kay Connors, MSW, LCSW-C

10:30
to
12:00

Infant Mental Health Association of MD/DC

D'Lisa Worthy

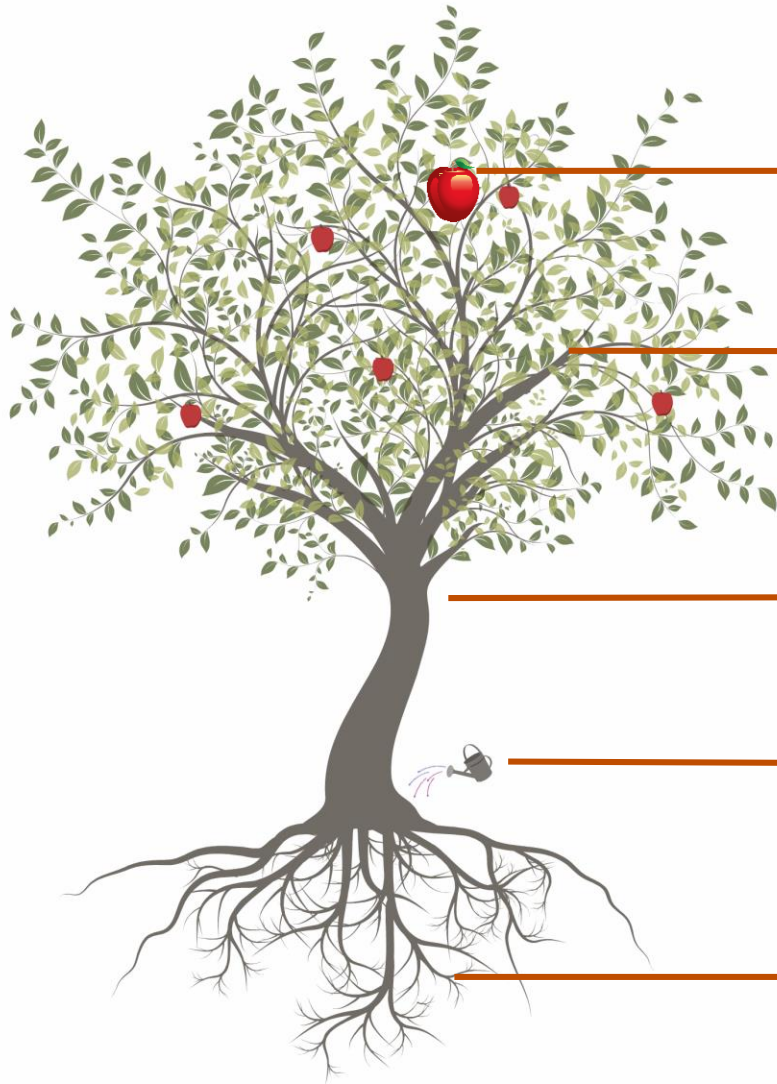
12:00
to
12:05

SSIP— Implementation & Evaluation

Pam Miller &
Janette Guerra

12:05
to
12:20

From Roots to Results - SSIP Strategies



Results: *Substantially increase the rate of growth of positive social emotional skills and relationships in infants, toddlers, and preschoolers with disabilities.*

Natural & Inclusive Learning Practices in the IFSP/IEP Development, Implementation, Evaluation:

- ***Routines-Based Interview (RBI)***
- ***SEFEL/Pyramid Model***

Teaming & Coaching Practices:

- ***Reflective Coaching***
 - Local & State levels

Leadership:

- Cecil, Frederick, Howard, Montgomery County ITPs
- State & Local Implementation Teams
- Strategic Collaborations

Roots: All programs & personnel firmly grounded in Key Principles & DEC Recommended Practices

Evidence-Based Practices

Routines-Based Interview

- Personnel - Training & Coaching RBI across all disciplines
- Infrastructure - Time in IFSP process to complete RBI (initial & annual)
- Data-Informed Decision-Making - 91.7 % increase of staff trained to fidelity

SEFEL/Pyramid Model

- Personnel - Training & Coaching SEFEL/PM across all disciplines
- Infrastructure - Benchmarks of Quality: Universal SE Screening includes time in IFSP process for initial screening & appropriate response
- Data-Informed Decision-Making - BoQ Tier 1 Indicators 12.5% up to 43.8%

Reflective Coaching

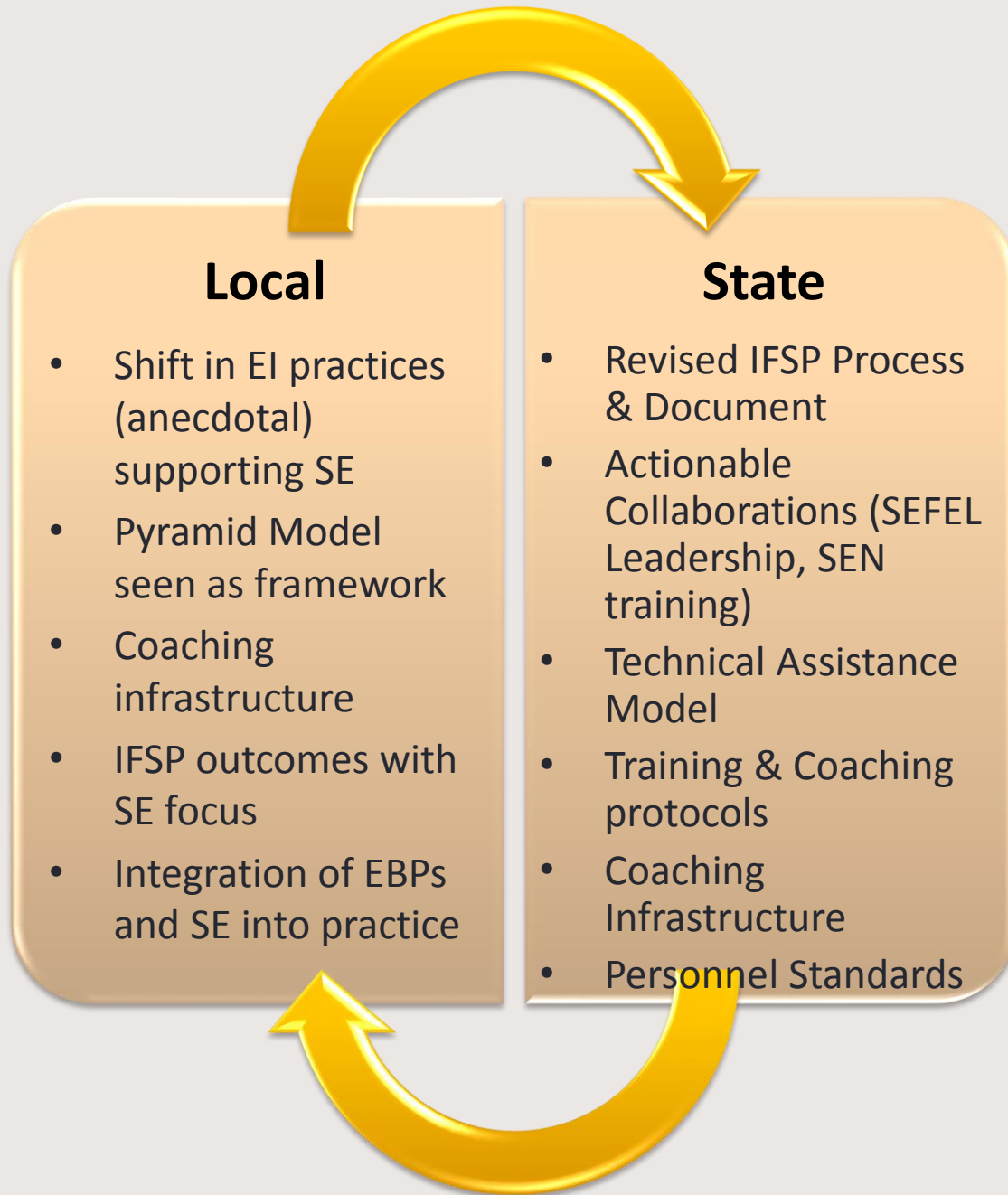
- Personnel - Training & Coaching on Colleague-to-Colleague Coaching across all disciplines
- Infrastructure - Shifting responsibilities to allow time for coaching, establishing culture that values coaching
- Data-Informed Decision-Making - Master Coach



Infrastructure is KEY!

- State Implementation Team
- Local Implementation Teams
- Coaching
- TAP-IT

Implementation Outcomes



Internal Early Intervention Silo-Busting

Integration of
Evidence-
Based
Practices

Layering of
additional
social
emotional
EBPs within
the framework

Cross-
discipline
personnel
development

Transdisciplinary Teaming & Practices

Lessons Learned from SSIP Work

Scale-Up

Cross-System Silo-Busting

Regular
Communication
across systems

Coordinated
service
delivery

Collaborative
personnel
development



**Comprehensive Early Childhood
System of Care**

Improved Social Emotional Health & Well-Being

Foundation of all Future Development

Break

12:20
to
12:30

Debrief & Next Steps—Working Lunch & Report Out

1. What's one thing that you learned?
2. What's still missing?
3. What's next for the children and families you support?

12:30
to
1:00

Updates

1:00
to
1:55

Legislative Updates

Rachel London

1:00
to
1:30

Division of Early Childhood Updates

Cyndi Lessner

1:30
to
1:40

Division of Early Intervention Services & Special Education, Birth to Kindergarten

Janette Guerra

Pam Miller

1:40
to
1:50

SICC Updates

Brenda Hussey-Gardner

1:50
to
1:55

SICC Upcoming Meetings

Executive Meetings

(1:00-2:00, Call)

August 1, 2019

October 31, 2019

January 9, 2020

March 5, 2020

May 7, 2020

June 6, 2019

September 12, 2019

December 5, 2019

February 6, 2020

April 2, 2020

Joint Meeting

(10:00-2:00, TBD)

June 4, 2020

General Meetings

(1:00-3:30, CTE)

Wrap-Up & Adjournment Thank you!

1:55
To
2:00