



Instructions





What County Do You Live In?

11 responses

baltimore

baltimore county

baltimore city

montgomery

baltimore co

frederick

3



11





What options have we not considered?

7 responses

Offering a state grant that schools can apply for to provide transportation

I think we have covered most of the ones that have come to our collective minds

Capacity of local transit to adapt routes to provide reasonable routes serving private schools

Financial incentives for individuals to carpool or use group transportation

What improvements could be made to MTA service to make families feel good about using it?

Consortium to provide transportation services to private schools

Is there existing information about family expectations of MTA performance?

2

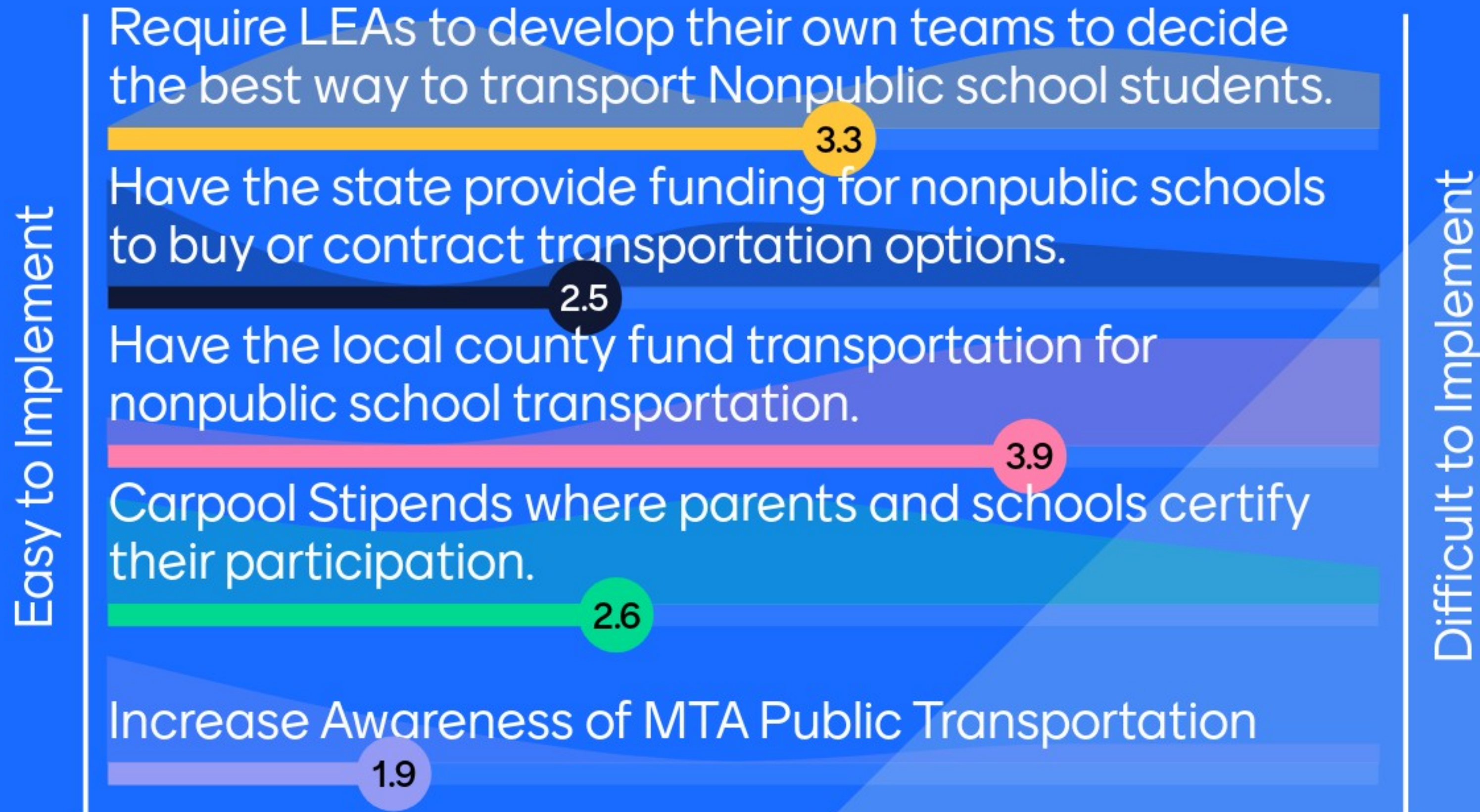


7



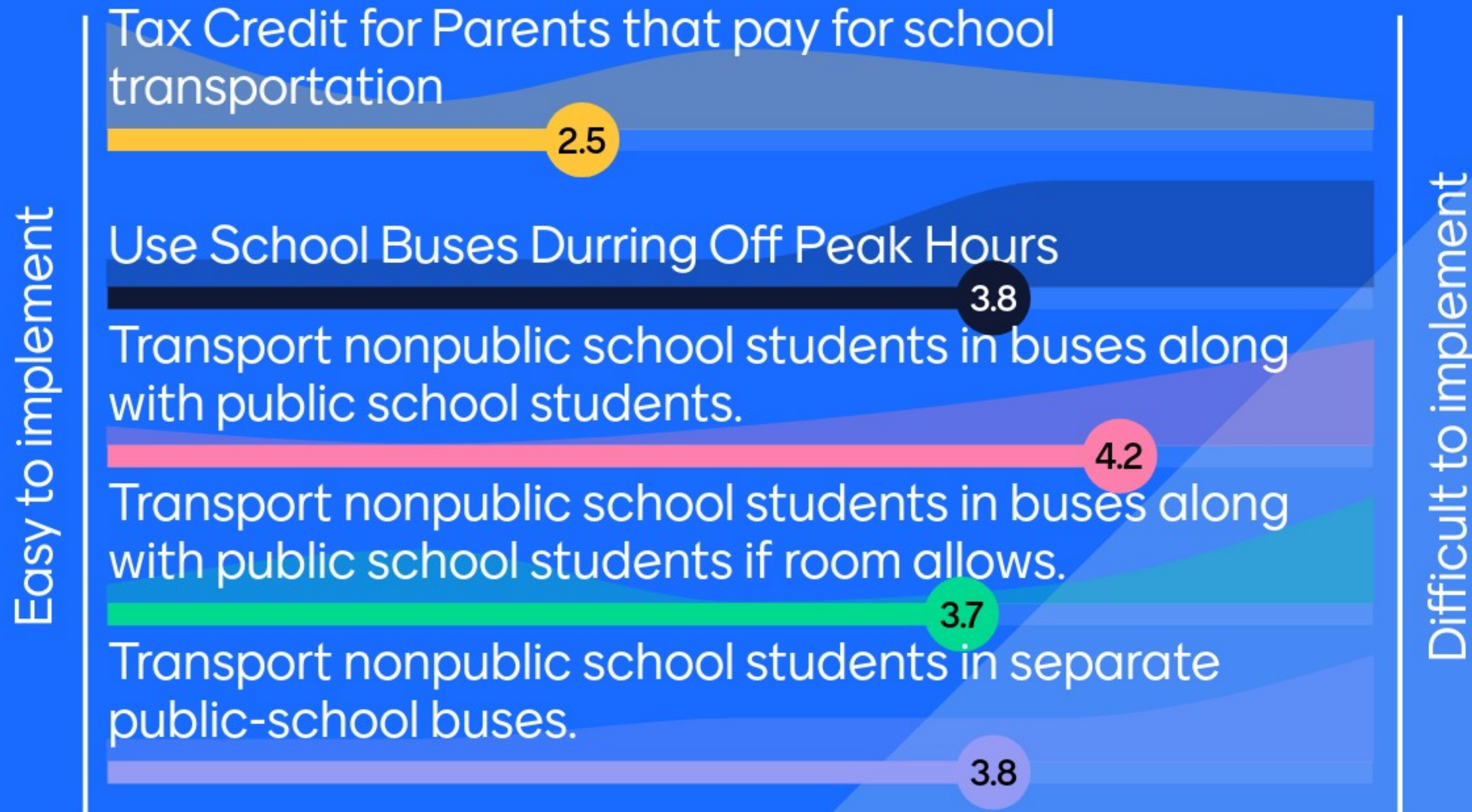


Ease of Implementation





Ease of Implementation



Cost of Implementation



Low Cost

High Cost

Require LEAs to develop their own teams to decide the best way to transport Nonpublic school students.

2.4

Have the state provide funding for nonpublic schools to buy or contract transportation options.

4

Have the local county fund transportation for nonpublic school transportation.

4.2

Carpool Stipends where parents and schools certify their participation.

3.2

Increase Awareness of MTA Public Transportation

1.1



10



Cost of Implementation

Low Cost

Tax Credit for Parents that pay for school transportation

3.5

Use School Buses Durring Off Peak Hours

3

Transport nonpublic school students in buses along with public school students.

3.1

Transport nonpublic school students in buses along with public school students if room allows.

2.7

Transport nonpublic school students in separate public-school buses.

3.9

High Cost



10





Impact of Implementation

No Impact on Ridership

Require LEAs to develop their own teams to decide the best way to transport Nonpublic school students.

2.4

Have the state provide funding for nonpublic schools to buy or contract transportation options.

3.8

Have the local county fund transportation for nonpublic school transportation.

3.5

Carpool Stipends where parents and schools certify their participation.

3.3

Increase Awareness of MTA Public Transportation

2

High Impact on Ridership

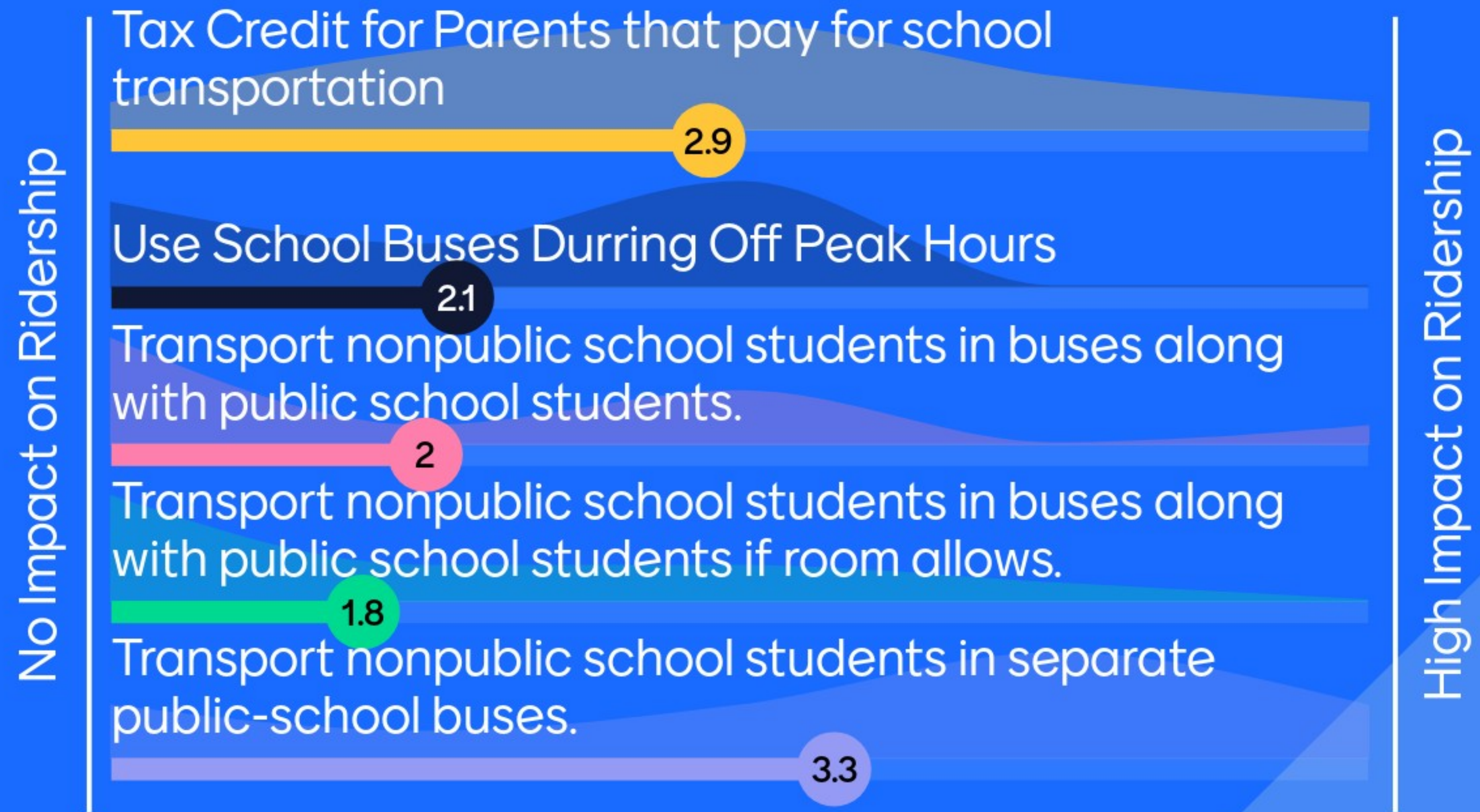
2

11





Impact of Implementation





Any other Thoughts?

11 responses

It's hard to assess impacts when we don't know why private school parents, with school provided transportation, don't use it

This is quite obvious, but just will say: more impact costs more money.

I thought it helped out options in perspective. Other thoughts are using a mixed solution based on county and capacity

I think it's essential to understand the motivation of private school families who don't use provided transportation before we recommend a solution to get them out of their cars.

What is the capacity of buses during off peak hours?

It would be helpful to survey families to see whether they would change transportation if it was an option. And what the most appealing option is.

With only 13% using provided options, it seems important to understand why families dont take advantage of it.

How would using buses in off peak hours impact life expectancy and maintenance costs?

Wondering what the percentage of public school students use busing available to them. Is it a constant percentage

1



8





Any other Thoughts?

11 responses

It would be useful to have more information about private school students' use of MTA.

Non-public schools may enroll students from more than one district.

1



8





Traffic Light to Recommendations



Not Close

Getting There

Looking Good!



7

