



Maryland Association for the Education of Young Children

All young children thrive and learn in a society
dedicated to ensuring they reach their full
potential.

Mission Statement

An Affiliate of **naeyc**[®]

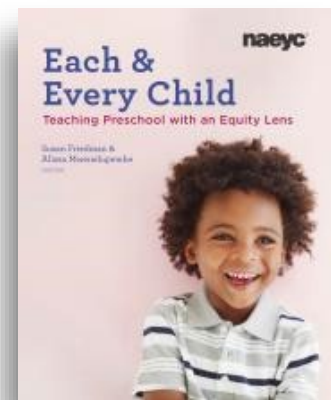
Vision

MDAEYC promotes high-quality early learning for all children, birth through age 8, by connecting practice, policy, and research. We advance a diverse, dynamic early childhood profession and support all who care for, educate, and work on behalf of young children.



Aligning with the Blueprint for Maryland's Future

- Expand access to quality early learning
 - Developmentally Appropriate Practice
 - Position Statements
 - Public Policy & Advocacy
- Strengthen educator preparation and support
 - Unifying Framework
 - Commission on Professional Excellence
- Build seamless Birth–Grade 3 systems
 - P-3 Alignment
 - Kindergarten as a Sturdy Bridge



2025 Key Initiatives

1. **Make a Circle Screenings:** Public Awareness & Advocacy
2. **Play Conference:** Promoting the Power of Play
3. **Professional Development:** Growing an Effective Equity-focused Workforce
4. **Advocacy:** Community Building





Together we:

Build a strong, seamless early learning system

Elevate and unify the early childhood profession

Champion equity and excellence for every child

info@mdaeyc.org



Maryland State Child Care Association

Who Are We?

What Do We Do?

The Why?

Priorities Agenda

Celebrate Children and Child Care/Early Childhood!

- April Month of the Young Child!
 - Partnership with Kaplan Early Learning
 - Recognition for importance of early childhood!
- National Child Care Provider Appreciation Day, May 9, 2025
 - Citations from Women's Legislative Caucus



Child Care is an Economic and Equity Imperative

Focus on building a strong, sustainable Early Childhood ecosystem from birth to age 5 with our coalition of partners!

- Child care is alarmingly in decline in our state. We are competing for a workforce with Amazon, Target, and Maryland public schools.
- Our business model is not sustainable without three and four-year olds.
- Efforts will be focused on supporting children, families, and the ECE/Child Care workforce, reviewing regulation and equitable policies, aligning and strengthening systems and celebrating the successes of those caring for and educating our most important natural resource, children!





MSCCA Advocacy at Work!

Governor Moore's State Operating Budget FY 2026

Maryland huge budget shortfall and uncertainty from federal government dominated all fiscal considerations and placed child care funding in jeopardy.

Even though Governor's budget included additional funding for the Child Care Scholarship Program due to the significant increase in participation, Maryland will implement an enrollment freeze for new families beginning May 1, 2025.

The funding for the Child Care Credentialing Program was finally included in the supplemental budget as required in law by HB 1441. MSDE will restore the program for this fiscal year beginning in July 2025.





ADVOCACY IN ACTION: Protecting Maryland's most valuable assets, our children! WHAT WE DID...

15,000 EMAILS SENT TO PROTECT THE CHILD CARE SCHOLARSHIP PROGRAM AND RESTORE THE CHILD CARE CREDENTIALING PROGRAM.

MSCCA LAUNCHED MULTIPLE ADVOCACY AND AWARENESS CAMPAIGNS TO DIRECTLY ENGAGE STATE LEADERS, TARGETING CRITICAL FUNDING PROGRAMS AND CRITICAL BILLS IN SUPPORT OF MARYLAND'S CHILDREN. WE UTILIZED AN ADVOCACY SOFTWARE TO GENERATE 4,776 EMAILS FOR HB 1475 WHILE MOBILIZING A TOTAL OF 1,316 ADVOCATES IN THE STATE TO TAKE ACTION.

HB 389/SB 516- Property Tax-Day Care Centers, Child Care Homes, and Child Care Centers

Champions, Delegate Julie Palakovich Carr and Senator Nancy King, Montgomery County sponsored:

This enabling legislation allows counties and municipalities to increase property tax incentives for child care centers and family child care homes. The bill expands and enables property tax incentives up to \$10,000.

The bill was signed into law on April 22, 2025!



HB 1475- Office of Child Care Advisory Council-Publicly Funded Prekindergarten-Analysis and Report (Mixed Delivery Viability Act)

Delegate Jessica Feldmark, Howard County:

This important bill builds on both the Maryland Educator Shortage Reduction Act of 2023 and HB 1441, Early Childhood Education-Publicly Funded Prekindergarten Programs-Alterations form 2024. It also is based on recommendations from the AIB taken from their 2023 report on barriers to participate in public prekindergarten.

HB 1475 seeks to establish a stronger, more equitable foundation for Maryland's mixed delivery of Pre-K model. As amended, the bill requires MSDE to establish a workgroup of specific stakeholders who will be tasked with evaluating regulatory, statutory, and procedural barriers private providers currently face and offer actionable policy recommendations to remove said barriers.

Hb 1475 requires specific reports between June 2026 and December 2027 submitted to the general assembly.

HB 859- **Access to** **Health** **Insurance for** **Child Care** **Professionals** **-Outreach**

Delegate Jared Solomon, Montgomery County:

This important legislation requires Maryland Health Benefits to collaborate with child care to promote access to health insurance for child care professionals.

Additionally, the bill requires the exchange to conduct a survey, in consultation with MSDE, and relevant nonprofit organizations, to assess current levels of health care access across the child care community.

Passed and MSCCA proud to take steps in the right direction to elevate health care benefits for child care, provide data, and support for the workforce!

HB 477-State Department of Education-Family Child Care and Child Care Centers-Regulatory Analysis

Delegate Ben Barnes, Anne Arundel and Prince George County and Delegate Aletheia McCaskill, Baltimore County:

This bill, as amended, requires MSDE to conduct a thorough analysis of the State's licensing/regulatory requirements for child care facilities. In conducting this analysis, MSDE must specifically look at current regulations that have created barriers for providers. Safety is paramount, however in review of current regulations determine which contribute to safe environments, address quality, and have a significant impact on a provider to open or operate a facility.

Additionally, MSDE must look at best practices in other states and regions. The bill was amended further to require MSDE to conduct the analysis in consultation with the Office of Child Care Advisory Council, state and local ECAC's, private providers, and nonprofits and unions who represent private child care providers.

MSCCA advocated for significant amendments which were incorporated into final legislation and passed.

More
Priority Bills
that MSCCA
Supported
and Help
Pass

HB 785- Common Ownership Communities and Zoning Authorities-Operation of Family Child Care Homes-Limitations

HB 1122-Office of Child Care Advisory Council-Membership-Alterations

HB 1121-Child Care Scholarship Program-Youth Transitioning From Foster Placement to Successful Adulthood Pilot Program Established

HB 185/SB 359- Therapeutic Child Care Grant Program –Funding –Alterations

HB 150/SB 252-Child Care Centers-Certified Staff Ratio Requirement-Repeal

HB 325-High School Diploma by Examination- Requirements and Study

Delegate Wims, Delegate
Palakovich Carr, Delegate
Wilkins, Montgomery County,
Delegate Pena-Melnyk, Prince
George County,

This bill allows an individual to
take all components of the of
GED examination in the same
language from English or
Spanish language
examinations offered by MSDE.



MSCCA Priorities Legislative Session... Did Not Pass

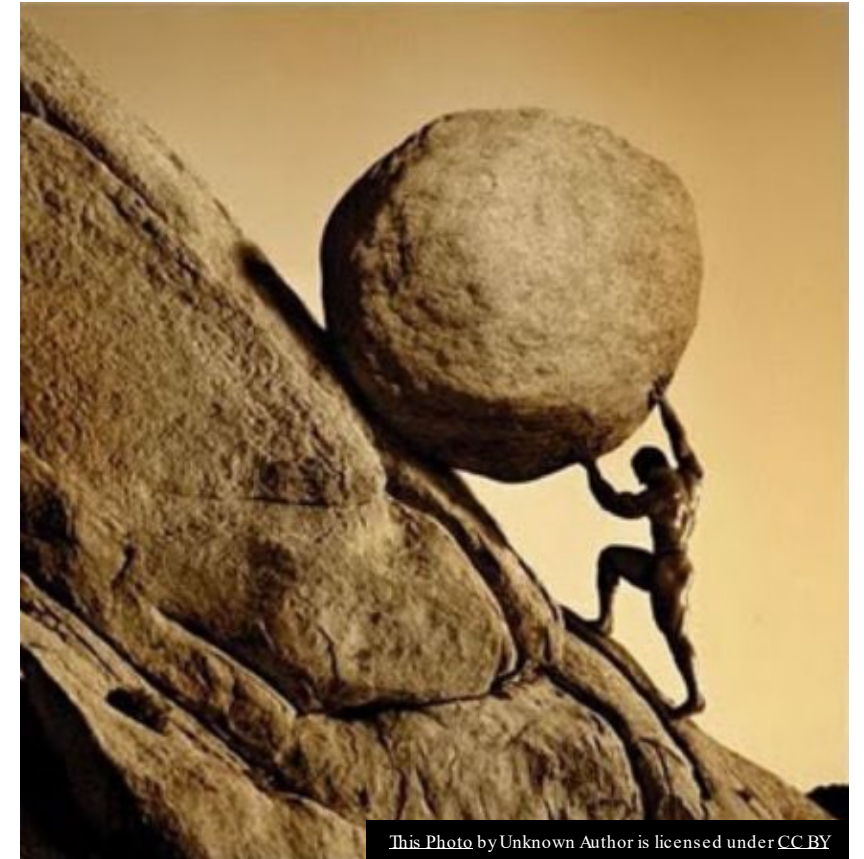
HB 662-Child Care Affordability Commission-Establishment (while did not pass, the Ways and Means Committee referred it to an interim study, meaning MSDE and Dept. of Legislative Services must conduct a study as outlined in this bill before the start of the next legislative session)

HB 524/SB 462- State Board of Education-Membership-Early Childhood Development Professional

(while didn't pass, MSCCA is working closely with the Moore Administrations to address the issue of representation, as they are supportive of an eligible early childhood professional appointment to State Board of Education!

HB 1325-Substitute Child Care Provider Pool Pilot-Established

HB 1303- Child Care Centers-Teacher Qualifications-Alterations



This Photo by Unknown Author is licensed under CC BY

Priorities Legislative Session... Did Not Pass

**SB 857- Child Care-Prekindergarten Expansion Grant
Modifications and Workgroup**

**HB 1469- Taxes- Sugary Beverage Distributor Tax
(For Our Kids Act)**

**SB 610/HB 1492- Growing Family Child Care
Opportunities Program-Funding**

**HB 911- Landlord and Tenant-Family Child Care
Homes**



**LATINO CHILD CARE
ASSOCIATION
OF MARYLAND INC.**



Latino Child Care Association of Maryland (LCAM)

Empowering Latino Child Care Educators for Brighter Futures

- Our mission: “Promote early childhood education through the professional development of Latino child care educators.”
- LCAM is a statewide nonprofit advocating and supporting Latino child care educators in Maryland.
- We believe every child deserves a strong start, and we work to eliminate barriers faced by Latino educators.
- Our 'why': To uplift Latino voices and ensure children are ready to succeed from Day One in Kindergarten and beyond.



**LATINO CHILD CARE
ASSOCIATION
OF MARYLAND INC.**





**LATINO CHILD CARE
ASSOCIATION
OF MARYLAND INC.**



Our Work: A Trusted Partner in Maryland's Early Learning Landscape



Maryland
STATE DEPARTMENT OF EDUCATION



MARYLANDEXCELS



**EARLY
CHILDHOOD
SERVICES**
DEPARTMENT OF HEALTH & HUMAN SERVICES

1401 ROCKVILLE PIKE, SUITE
200, ROCKVILLE, MD 20852



**LATINO CHILD CARE
ASSOCIATION
OF MARYLAND INC.**

Coaching and Licensing
Pathways: Partnered with MFN
to mentor new FCC candidates
via GOFCC.

Credentialing Support:
Conduct CDA observations,
supporting educators' growth.

Professional Development:
Partnered with Stanford's
FIND-PD to elevate practice
with science-based tools.

Advocacy: Signed an
agreement with the Bainum
Family Foundation to support
enhanced quality, affordability
and accessibility of early
childhood education.

Literacy: Signed a MOU with
PEP and MCAEL to advance
education and English literacy.

Material support: Developed
and signed an agreement with
COA to support 9 FCC
educators in Montgomery
County with MSDE approved
curriculum for Pre-K readiness

Coordination of Roles

LCAM works closely with its partners to ensure that their efforts are complementary, avoiding duplication and leveraging each partner's strengths. **For example:**

- LCAM acts as a liaison between its members and MCAEL, promoting enrollment in MCAEL's English classes for early childhood educators. This allows educators to communicate more effectively with parents whose first language is English. From September 2024 to the present, LCAM has helped 65 educators participate in MCAEL classes and referred an additional 55 to other English programs.
- LCAM collaborates with the Council for Professional Recognition, which has designated and trained a Professional Development Specialist to assist LCAM members in obtaining and renewing their Child Development Associates (CDA) credentials. So far, the PD Specialist has supported 78 early childhood educators through the CDA process in Maryland.
- LCAM has recently signed an agreement with COA to provide nine family child care educators in Montgomery County with high-quality classroom materials aligned with the Pre-K Expansion program, along with mentoring on how to use these resources effectively.

What Maryland Needs & Where LCAM Leads

- Expand access to multilingual professional development and licensing support.
- Elevate FCC Quality by embedding research-based tools like FIND-PD into daily practice.
- Build Early Literacy Readiness through culturally relevant materials and CDA-level training.
- Bridge Systemic Gaps by ensuring Latino FCC educators have a seat at every policy table.
- First-time collaboration in the Month of the Young Child with 16+ organizations in Maryland.
- Policy & Governance: Updated LCAM Bylaws (first time since 2015) to reflect LCAM's evolving role in support for early childhood education.

“The success of the Blueprint depends on reaching every provider and every child—LCAM is your trusted bridge to Latino child care communities.”

Together for Maryland's Children

**“When we invest in educators,
we invest in children's futures.”**

- LCAM is ready to scale impact through collaboration.
- We bring trusted relationships, cultural responsiveness, and hands-on support.
- Let's ensure all children are ready for Kindergarten—starting with strong, supported educators.

“Ready for K, Ready for Life”





**LATINO CHILD CARE
ASSOCIATION
OF MARYLAND INC.**



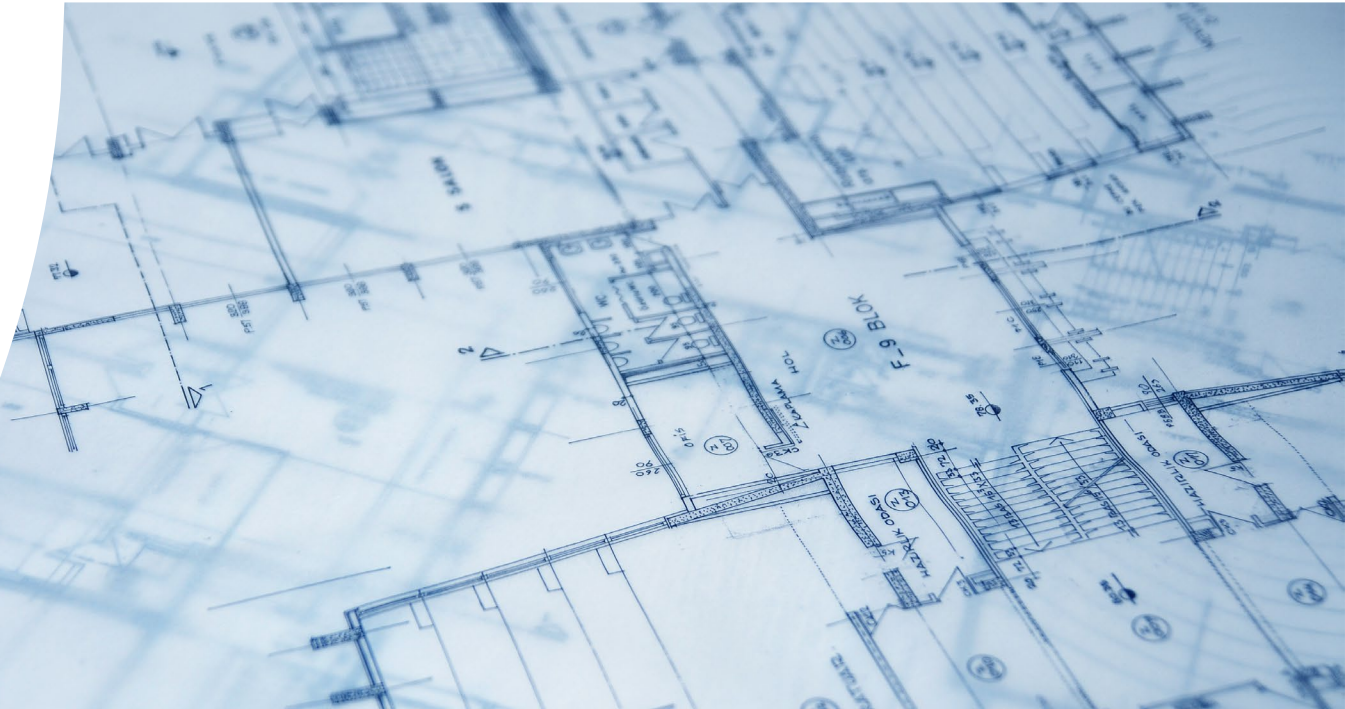


MSFCCA
Maryland State Family Child Care Association

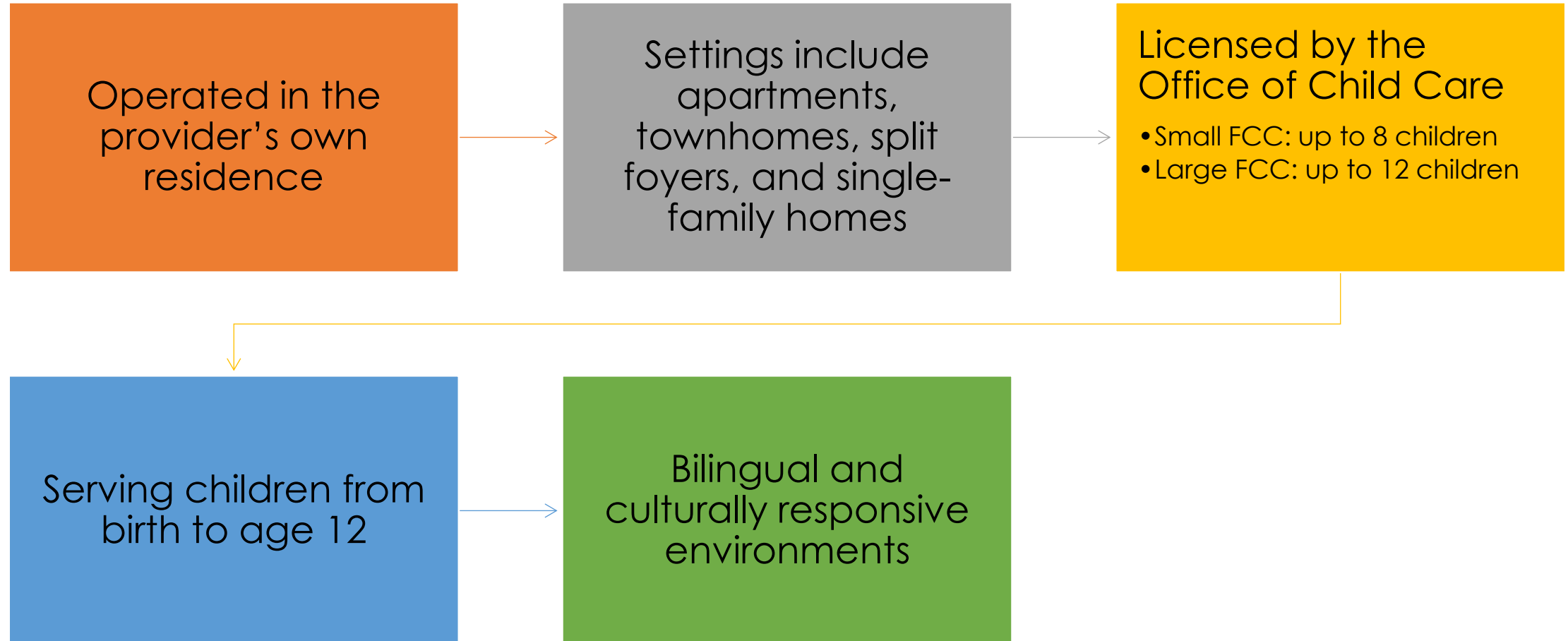
Family Child Care in Maryland's Early Childhood Ecosystem

Supporting Family Child Care in the Mixed
Delivery System

Presented by: Ruby Daniels, President



Understanding Family Child Care (FCC)





Unique Benefits of Family Child Care

- **Education Starts at Birth:** FCC serves children from birth through age 5, supporting critical brain development and early learning.
- **Continuity of Care: Mixed-age settings** support bonding, sibling care, and stable relationships with one provider.
- **Pre-K Expansion:** Increasingly, FCCs provide Blueprint-aligned Pre-K for 3–5-year-olds with wraparound hours.
- **Workforce-Friendly:** Flexible hours and neighborhood-based care help families manage commute and drop-offs with ease.
- **Culturally Responsive:** FCCs reflect the language, culture, and values of their communities—meeting families where they are.



About MSFCCA

- Founded in 1983
- Led by a board of current or former family childcare professionals
- Originally created for peer-to-peer support, mentoring, and professional development
- Evolved into a statewide advocacy organization
- Represents over 4,000 licensed FCC providers across Maryland

MSFCCA: A Backbone for Family Child Care Providers



Peer-to-Peer Support: Professional network of 4,000+ FCC providers offering coaching, mentoring, and collaboration.



Advocacy Leadership: Champions equity and inclusion of FCCs in the Blueprint mixed delivery Pre-K system.



Information & Resources: Bridges access to key programs for FCCs, especially those who are isolated or non-tech-savvy.



Elevating Quality: Supports providers pursuing CDA, MD Credentialing (reviving July 2025), NAFCC Accreditation, and MD EXCELS.



Financial Empowerment: Helps providers understand Blueprint funding, business sustainability, and long-term planning.

Our Priorities for the Year Ahead



Understand how FCC providers need to thrive in the blueprint system



Supporting workforce growth through CCANBE



Building alternative pathways for pre-k implementation

What FCC Providers Need to Thrive in the Blueprint System

Access to Timely Info – Many FCC providers miss opportunities due to limited tech or isolation. **Solution:** Outreach + Culturally Relevant Materials.

Alternative Pre-K Pathways – FCCs need independent routes to apply and implement Pre-K grants. **Solution:** Direct Application Support.

Support for Quality Advancement – Providers need resources to pursue recognition. **Solution:** Peer mentoring, training, and coaching.

Blueprint Business Training – FCCs need help aligning their model with Blueprint grants. **Solution:** Financial literacy and small business coaching.



Building Alternative Pathways for Pre-K Implementation

- Design equitable, accessible pathways for FCC programs
- Provide technical assistance and administrative infrastructure for grant management
- Promote models that allow FCCs to deliver Pre-K without needing to partner with larger LEAs or nonprofits
- Ensure policy design respects the FCC business model and supports continuity of care

Supporting Workforce Growth Through CCANBE



Phase 1 – Quality Quest Mentorship: Individualized coaching for quality improvement.



Phase 2 – Global Credentials, Local Opportunity: Support for CDA, foreign transcript evaluations, and credentialing.



Phase 3 – Be Part of a Blueprint Ecosystem: Prepares FCC to apply for Pre-K grants and participate in mixed delivery system.

The "Why" Behind Our Work

- Children thrive in consistent, nurturing environments
- Families benefit from trusted, flexible caregivers in their own communities
- FCC providers are educators, business owners, and community leaders
- A strong FCC sector strengthens the entire early childhood ecosystem



Call to Action for the State Board of Education

Recognize

Recognize FCC as a full partner in early childhood education

Ensure

Ensure policies and funding structures reflect the FCC model

Collaborate

Collaborate with MSFCCA to elevate provider voices and co-design solutions



This Photo by Unknown Author is licensed under [CC BY-SA](#)

Thank You!



Contact Information

Website: www.msfccca.org
rubydaniels@msfccca.org



Questions & Discussion



Maryland Developmental Disabilities Council

CREATING CHANGE • IMPROVING LIVES

Overview of the Council

Rachel London, Executive Director

VISION:

Our vision is that people with and without disabilities in Maryland live, learn, work, and play together.

MISSION:

The Maryland Developmental Disabilities Council creates change to make it possible for people with developmental disabilities to live the lives they want with the support they need.



Maryland Developmental Disabilities Council

CREATING CHANGE • IMPROVING LIVES

- The Council has been creating change to improve the lives of people with developmental disabilities since 1971.
- We are an independent state agency led people with developmental disabilities and family members.
- 100% Federally funded
- Our work is guided by a federal law called the DD Act.
- The Council is like a board of directors. They set goals for the Council and help guide the work we do. Most of our members are people with developmental disabilities and family members. People from state agencies and organizations are also members.

How We Create Change

We Lead

We Partner

We Advise

We Advocate

We Inform

We Empower

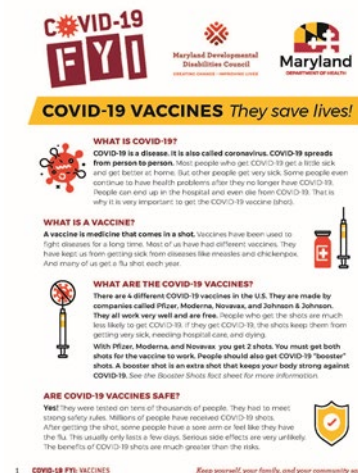
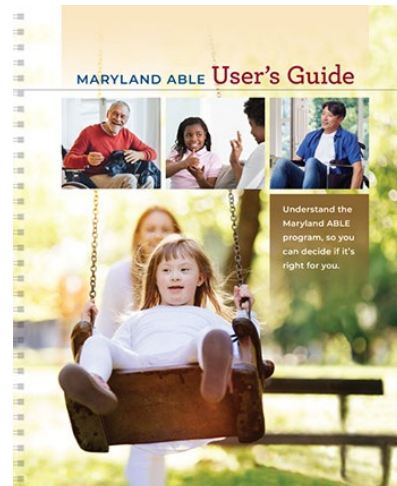
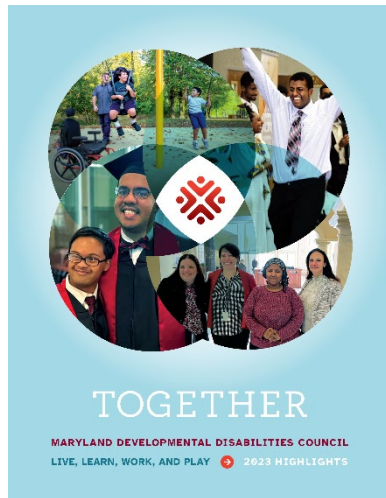
We Educate

We Find
Solutions

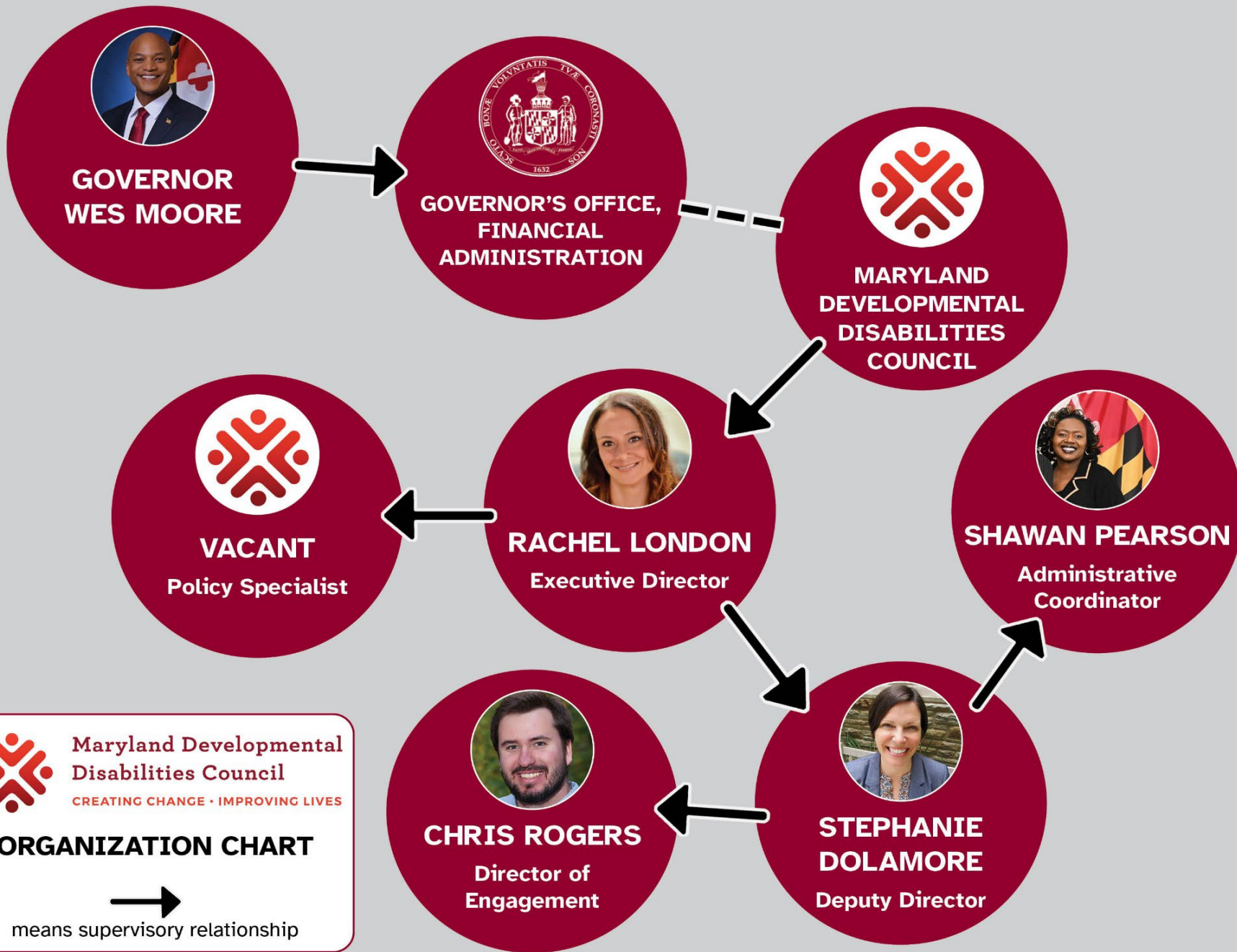
How we do our work



Publications and Resources



Plain language COVID
Resources in English and
12 additional languages



5 Year State Plan: 2022 - 2026

Every 5 years, the Maryland Developmental Disabilities Council develops a plan that guides our work. This is called our [State Plan](#). The State Plan identifies barriers that get in the way of people with developmental disabilities living the lives they want with the support they need. We look at issues that affect children, adults, and their families.

Goal 1: People with developmental disabilities are leaders and advocates.

Goal 2: People with developmental disabilities and their families are empowered to lead the lives they want with the support they need.

Goal 3: People with developmental disabilities and their families have access to their communities, and services and supports. They are treated with dignity and respect.

Nothing about us without us!

Targeted Disparity: This is the part of the state plan with an objective that focuses on people that are underserved or unserved compared to others.

- Plain language

Embedded in all our work:

- Internal policies
- Council Members & Staff
- Grant making
- Advocacy
- Partnership & Engagement



Goal 3

Objective 3.3: Improve child care and education practices so all children and youth with disabilities play and learn together with the services and supports they need to succeed.

Activities: 1) Fund technical assistance, training, and information sharing to increase the ability of licensed child care providers and others to support children with disabilities in their programs.

- [Abilities Network](#)

2) Advocate for state agencies and other organizations to provide more training and technical assistance

Young Children with Disabilities

Priorities:

- Increase access to high-quality, inclusive child care by providing training, TA, and resources.
- Increase access to public prekindergarten for young children with disabilities.
- Eliminate achievement gaps and make sure all young children are ready for kindergarten.

Goal: Young children with and without disabilities learn, play, and grow together with the services and support they need to succeed and thrive.



Maryland Developmental Disabilities Council

CREATING CHANGE • IMPROVING LIVES

Rachel London

RLondon@md-council.org

217 E Redwood Street, Suite 1300 Baltimore, MD 21202

EMAIL: info@md-council.org

ONLINE: md-council.org

SOCIAL MEDIA: [@MDDDDCouncil](https://www.facebook.com/MDDDDCouncil)

TELEPHONE: 410.767.3670



MARYLAND FAMILY NETWORK

**Presentation to the Maryland State Board of Education
April 29, 2025**

Laura Weeldreyer, Executive Director, Maryland Family Network
Mike Herschenfeld, Chief Impact Officer, Maryland Family Network

MFN's Vision

A Maryland where every child has a strong and equitable foundation to thrive in their first five years and beyond.

MFN's Mission

We mobilize networks across Maryland to ensure our young children and those who care for them have the resources and equitable opportunities to thrive.

What does MFN do?



Public Policy and Advocacy

- State legislative lobbying
- Parent coalition building
- County/Local policy and advocacy
- National, state, and local expert testimony
- Stakeholder awareness and education

Innovation and Impact

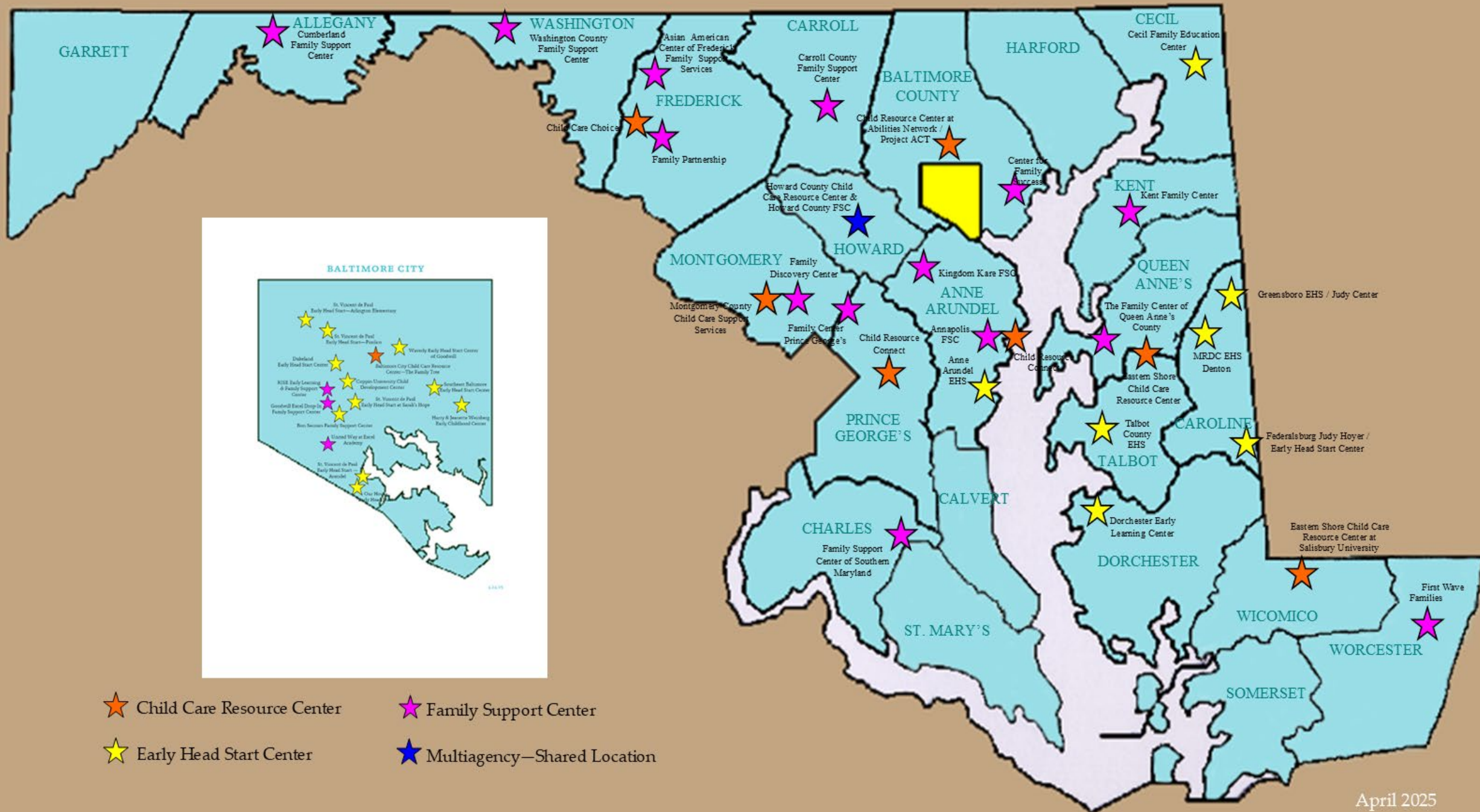
- Statewide data infrastructure
- Case studies and research
- Special projects/grants
- Modernized communication systems

Program Management

- Provider and Professional Supports and Services
 - Child Care Resource Center Network
 - LOCATE: Child Care
 - Growing Opportunities for Family Child Care
 - Shared Services Agency (Coming Soon!)
- Patty Center – Family Support Services Network (Blueprint)
- Early Head Start Network
- Community Based Child Abuse Prevention

Programs

- **Maryland Child Care Resource Network**: Statewide system of regional centers for enhancing the quality, availability, and affordability of child care in Maryland. They provide training, coaching, and technical assistance to providers, strengthening the early childhood workforce and promoting high-quality learning environments.
- **LOCATE: Child Care**: A free [online search platform](#) that enables families to find licensed child care programs, while also giving providers a dedicated platform to update the information families see—such as real-time vacancies, pricing, hours, languages spoken, and populations served.
- **Growing Opportunities for Family Child Care**: A statewide initiative to expand and sustain the supply of licensed family child care providers, particularly in areas with high poverty and unemployment rates or child care deserts
- **Patty Center – Family Support Services Network (Blueprint)**: These two-generational programs empower families with resources and support to foster strong parent-child bonds, promote school readiness, prevent abuse and neglect, and advance parental education and economic stability.
- **Early Head Start Network**: MFN is Maryland’s largest recipient of Early Head Start funds which are used to support 18 sites across the state.
- **Community Based Child Abuse Prevention**: Community-based efforts to develop, operate, expand, enhance, and coordinate programs and activities to strengthen families and preventing child abuse and neglect
- **Special Projects**: Baltimore City Police Department child care subsidy pilot case study, Maternal health, Parent leadership, etc.



MFN by the Numbers

Child Care Resource Centers: 8

- Support Touchpoints: 17,683
- Coaching Sessions: 986
- Attendees: 30,039
- Training Sessions: 1,317
- Training Hours: 4,511
- Certificates Issued: 21,973

Early Head Start Sites: 18

- Children Served: 468
- Families Served: 401
- Training Certificates of Completion: 1,237

Patty Center – Family Support Services Sites: 18

- Children Served: 573
- Families Served: 633
- Families Provided with Goods to Support Basic Needs: 988
- Training Certificates of Completion: 950

LOCATE: Child Care

- Family Providers: 4,110
- Center Providers: 2,608
- Total Slots: 204,812
- Total Searches: 181,593
- Total Families Searching: 23,569

Community Based Child Abuse Prevention

- 13 Grantees + 18 FSCs
- Children Served: 1,717
- Parents/caregivers Served: 2,359
- Number of Families with Children with Disabilities: 411

*All data cited above is based on each programs last full fiscal year or for snapshot data, the final day of the fiscal year

What is GOFCC?

- Intensive and entirely free program to support qualified individuals to open a licensed family child care business
- Reduces licensure to 6 months on average (from the 12-18 months without the program)
- Provides additional resources such as a laptop and scanner, CCMS subscription, and business training



A Brief History of GOFCC

- Started in 2015 with the Montgomery County Child Care Support Services
- Garnered attention resulting in the 2021 HB944 and SB711
- MSDE partnered with MFN to oversee and coordinate a Planning Grant during 2022
- MFN issued Implementation Grants to 5 agencies for September 2022 through August 2024
- MSDE awards funding for FY25

GOFCC by the Numbers

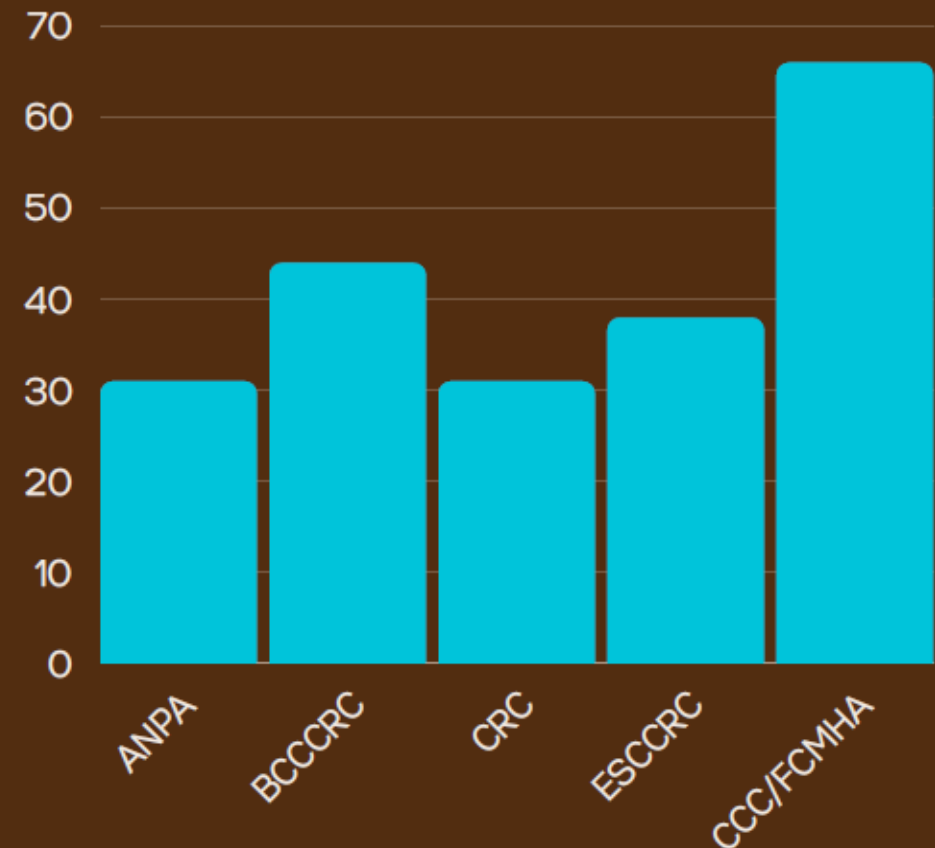
1473

Number of
Added Child
Care Slots

210

Number of
Programs
Licensed

September 2022-March 2025



**Total Number of GOFCC Licensed Programs*

Session 2025

■ The Good

- Communities with homeowner governance structures are prohibited from restricting family child care
- Increased access to tax credits for child care programs
- Child Care Credentialing Program funding reinstated
- Sustained investments in pre-k

■ The Challenges

- Child Care Scholarship Program enrollment cap
- Growing Family Child Care Opportunities Program (GOFCC) – Funding (SB 610 / HB 1492 did not pass).
- Infant Early Childhood Mental Health Consultation funding shortfall

Data Improvement Work

Existing or In Progress

- **Improving Data Systems & Processes:** We are aligning our data systems and processes throughout the organization improve decision-making at every level across the state.
- **Streamlining Program Data:** Multiple projects underway to make data handling more effective/efficient within specific programs:
 - **FSC Project:** A major effort to redesign how we collect and manage data, allowing for automated tracking and reporting across MFN, our providers, and MSDE.
 - **CCRC Project:** A multi-phase project to update the LOCATE system and simplify program reporting.

What's Next

- **Integrated Data System:** Creating a fully connected data system that links program outcomes, business processes, and technology. This will make operations more efficient and improve the positive impact of our programs on the children we serve.
- **Real-Time Performance Data:** Working towards providing 24/7 access to how programs are performing and key measurements.

▪ **Unique Student ID:** Working to integrate into the licensed child care system the existing State Assigned Student ID (SASID) currently used in public PK-12 programs to seamlessly track each progress from early care through post-secondary. This will allow Maryland to accurately evaluate programs and measure their longitudinal impact on a child's entire education journey.

Shared Services Agency

- **What is a shared services agency?** A membership-based organization where child care providers pay a tiered fee to join to access resources like a knowledge/document hub, discounted goods/services, or administrative supports (e.g., HR, payroll, marketing) to reduce individual burdens, enhance program quality, and improve financial sustainability
- **How is MFN designing towards the launch of a statewide shared services agency in Maryland?**
 - Initial focus on launching an invite only minimum viable product (MVP) by June 15, 2025
 - Joining the MVP will cost no more than \$300 for the year for the largest centers. All costs are expected to be more than offset by the anticipated savings
 - MVP will include: (1) access to a curated knowledge hub of documents, templates, and resources; (2) negotiated discounts across the spectrum of goods and services needed to operate any type of licensed child care business; (3) and access to a statewide job board
 - Collecting data and information to expand services and offerings and launch a true version 1 open to all providers later this year

A Win-Win-Win: The Economic Ripple Effect of Shared Services

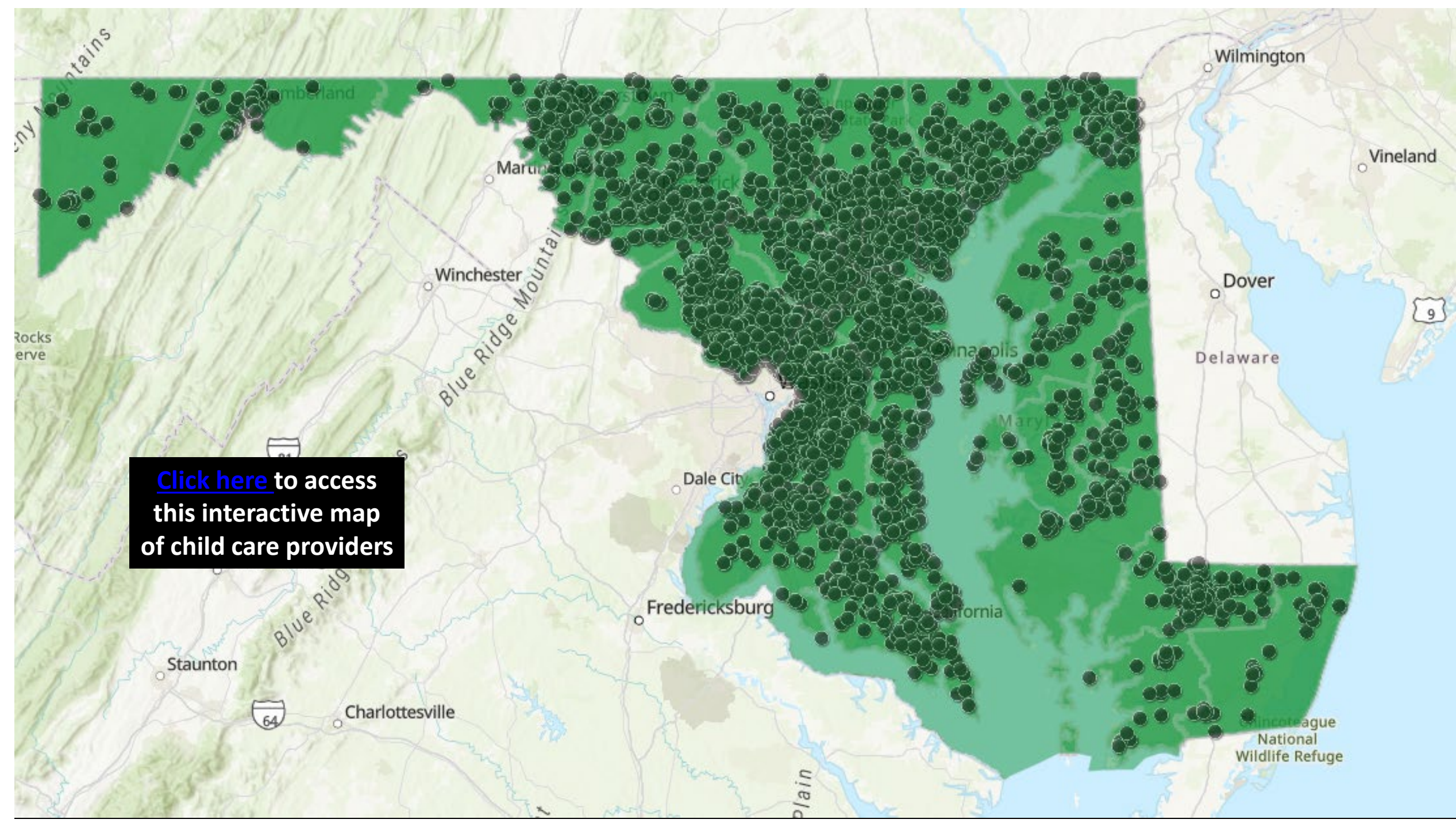
Benefits for Child Care Providers and Families:

- **Lower Operating Costs:**
 - Access to **discounted supplies**, professional services, and administrative services through collective purchasing power.
 - **Reduced burden** of individual administrative tasks (HR, payroll, marketing).
 - Access to an intentional network of professionals working through similar challenges and opportunities.
- **Enhanced Capacity & Quality:**
 - Freed resources allow for investment in qualified staff and program enhancements.
 - Increased ability to **hire more staff**, leading to better staff-to-child ratios.
 - Greater potential to reach and **increase licensed capacity**, serving more children.

Benefits for State & Local Economies:

- **Job Creation:**
 - More child care slots available necessitate the **creation of more jobs** within the child care sector.
 - A thriving child care industry attracts and retains a skilled workforce.
- **Workforce Participation:**
 - Increased availability of reliable and affordable child care enables more parents and caregivers to **re-enter or remain in the workforce**
 - Reduces absenteeism and increases productivity for businesses across all sectors.
- **Local Economic Growth:**
 - The agency can prioritize partnerships with **local, vetted vendors** for goods and services.
 - This **keeps dollars circulating within the state and local economies**, supporting local businesses and creating further economic activity.

[Click here](#) to access
this interactive map
of child care providers





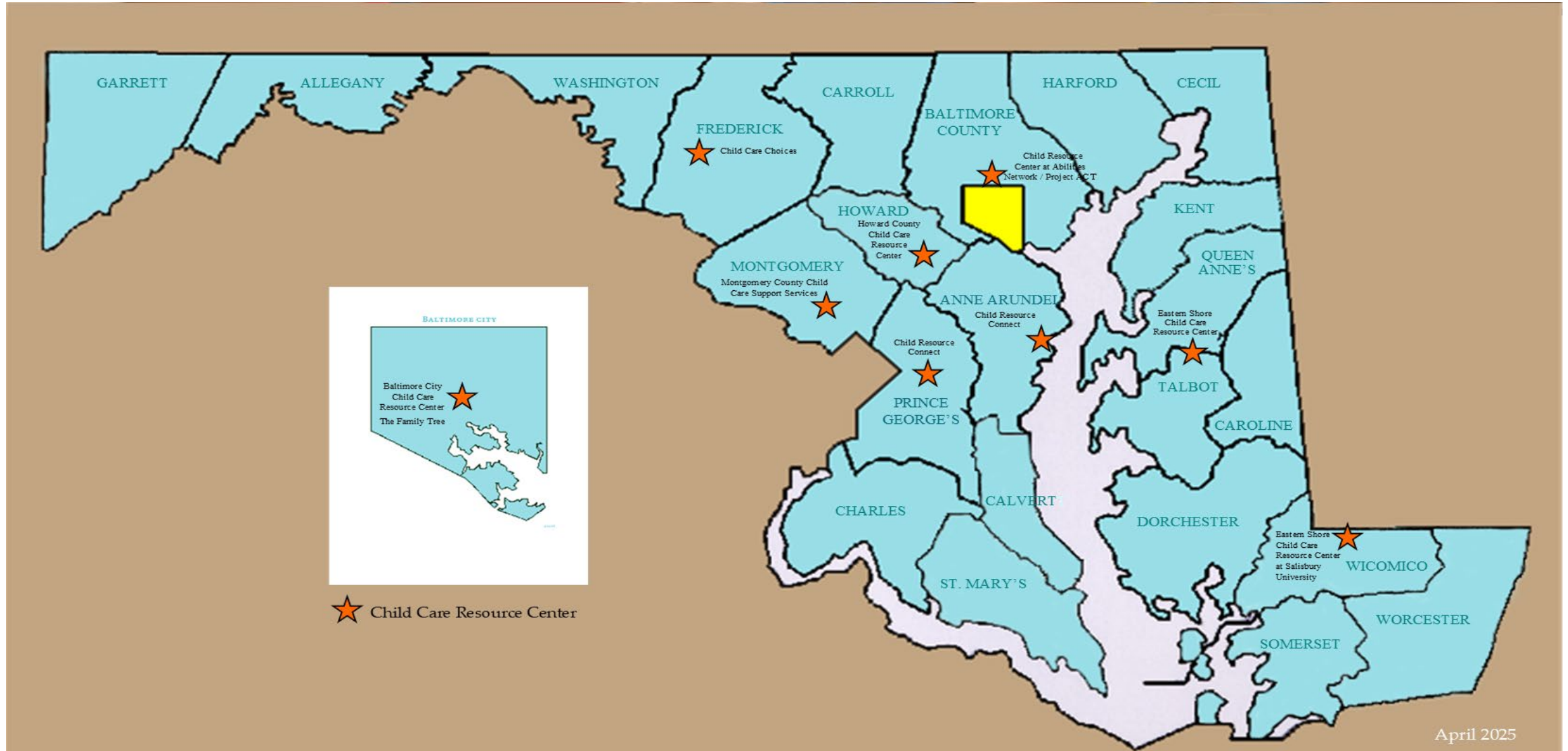
MARYLAND
FAMILY
NETWORK

Laura Weeldreyer, Executive Director
lweeldreyer@marylandfamilynetwork.org

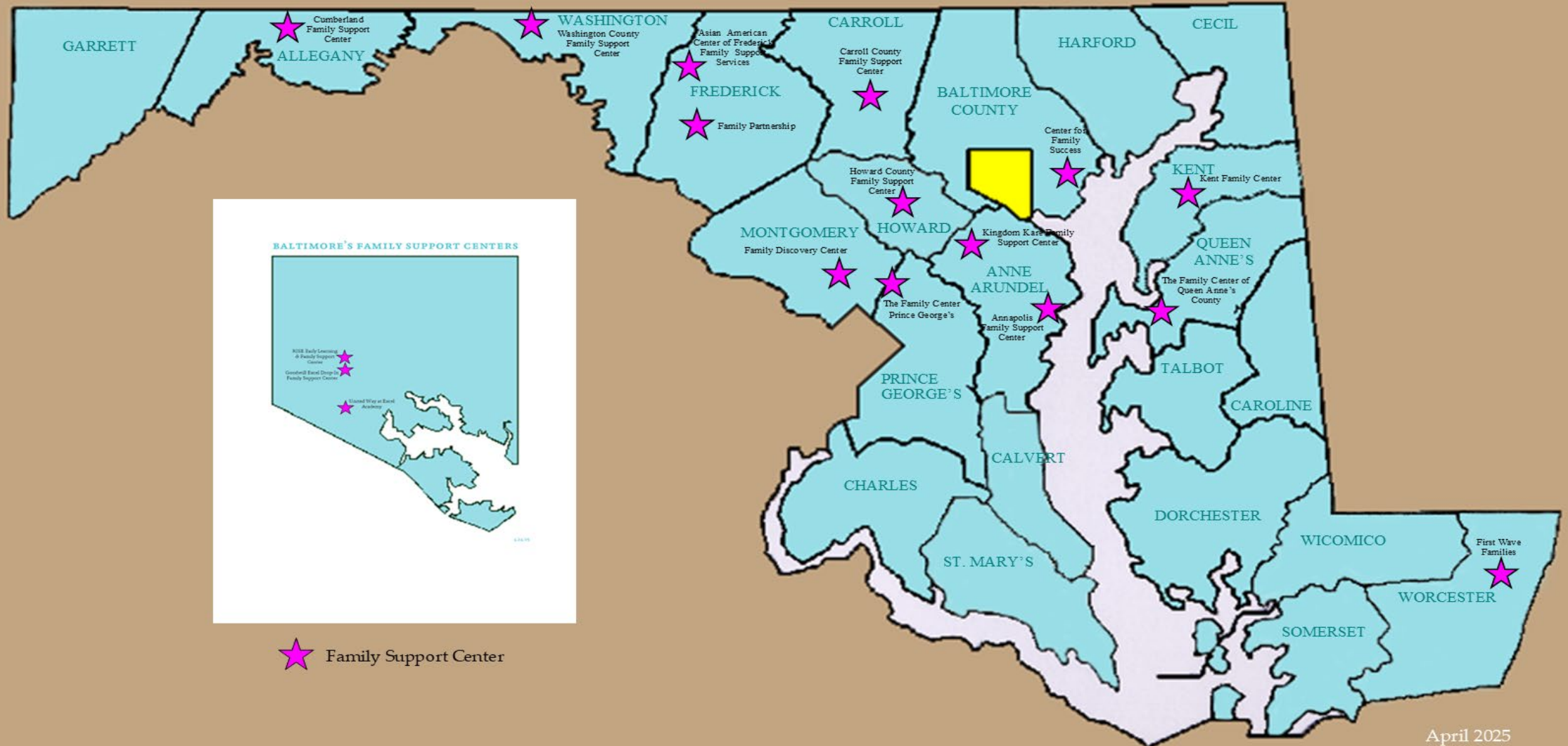
Mike Herschenfeld, Chief Impact Officer
mherschenfeld@marylandfamilynetwork.org

APPENDICES

Child Care Resource Centers



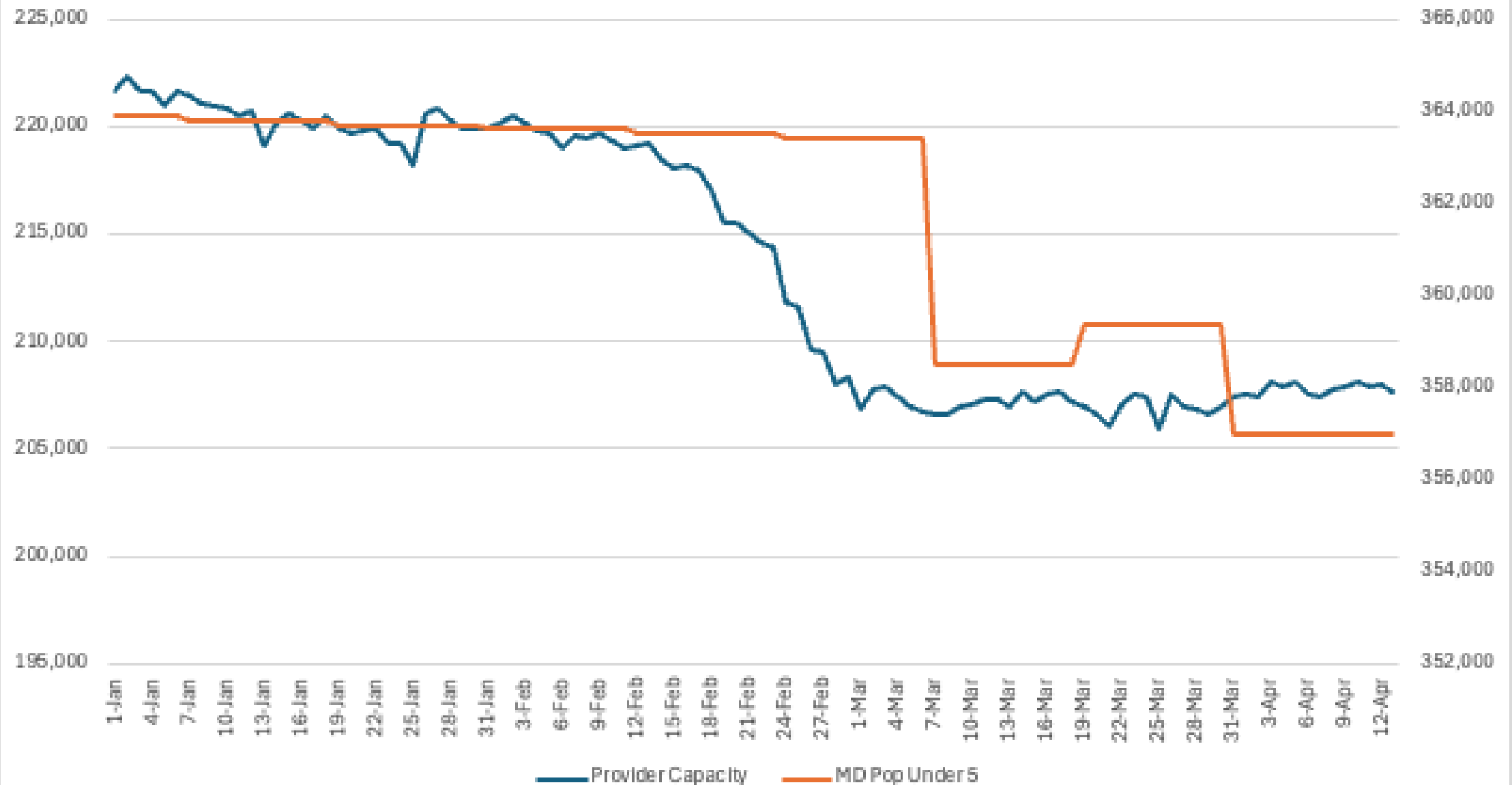
Patty Centers - Family Support Services



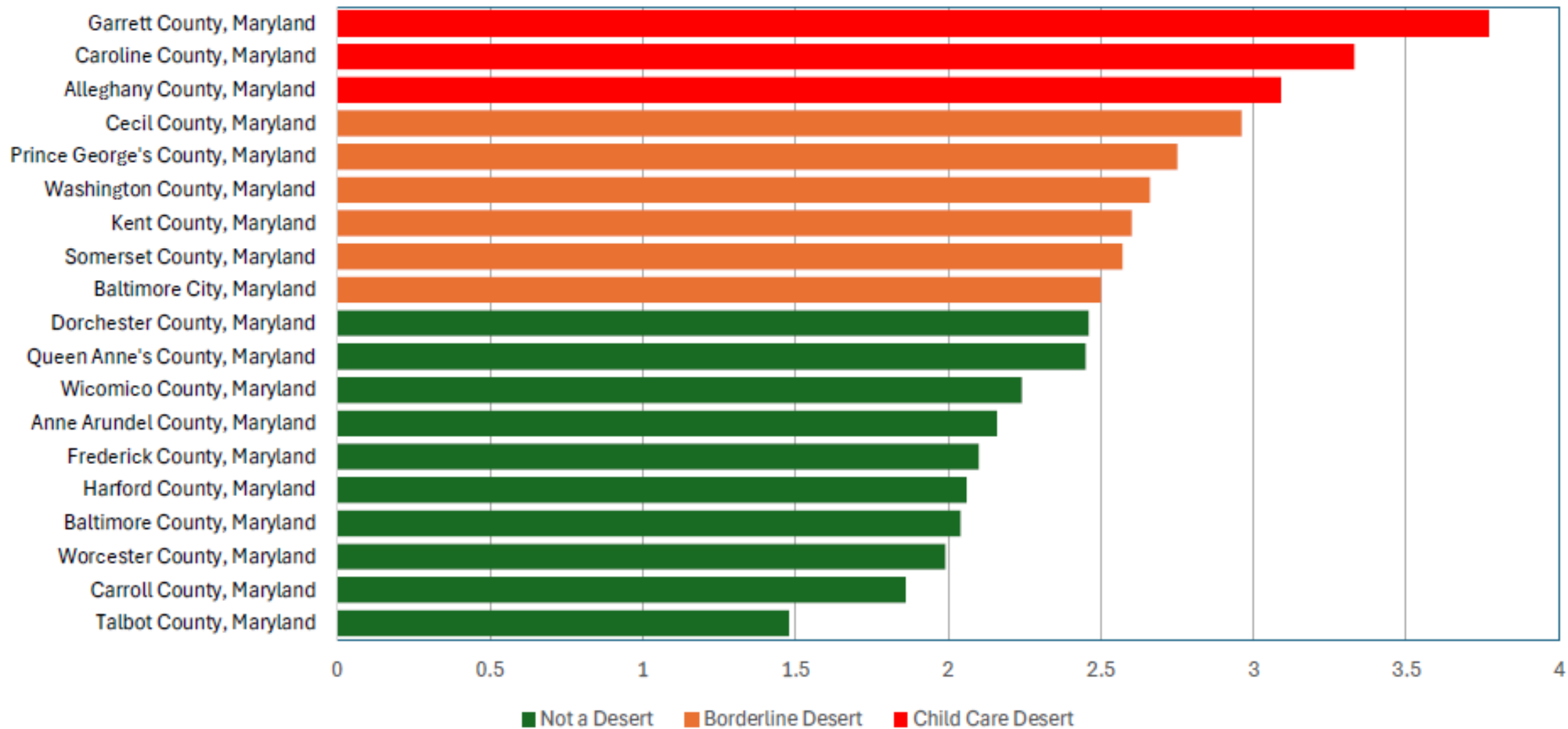
Provider Capacity



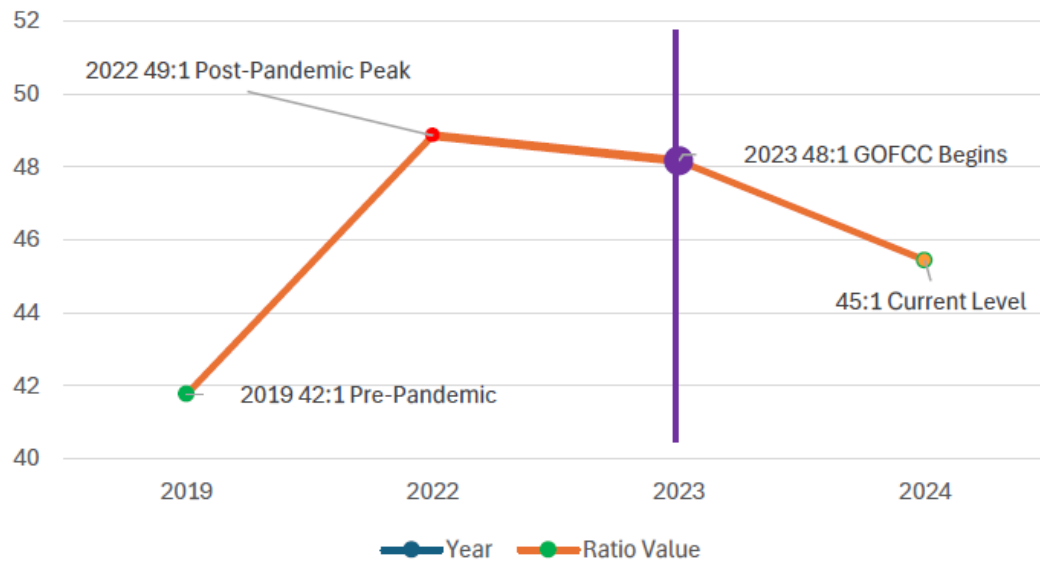
Provider Capacity vs. MD Population Under 5yo



Child Care Gaps in Maryland



Ratio of Children per Provider (2019-2024)



Maryland Child Care Supply vs. Demand (2019-2024)

